

**SURVEY & REMONUMENTATION**

APR 27 1995

COMMISSION

**LAND CORNER RECORDATION CERTIFICATE**  
**Filing Requirement of Act 74, Mich. P.A. 1970**

STATE OF MICHIGAN  
 COUNTY OF KALAMAZOO  
 RECEIVED FOR RECORD

94 DEC 15 PM 1 37

For corners in SCHOOLCRAFT TWP.

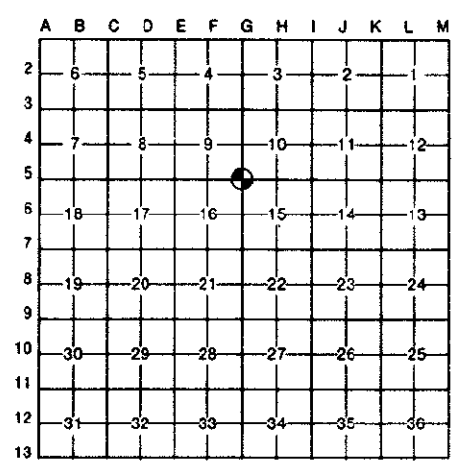
<u>KALAMAZOO</u> <small>(County)</small>	Located In:	Corner Code #
1. Public Land Survey	T <u>4</u> S R <u>11</u> W	<u>G-5</u>
	T _____ R _____	_____
	T _____ R _____	_____
	T _____ R _____	_____
2. Property Controlling in Section	S _____ T _____ R _____	_____
	S _____ T _____ R _____	_____
3. Miscellaneous Property in Sec.	S _____ T _____ R _____	_____
	S _____ T _____ R _____	_____
4. Lot No. _____, Recorded Plat _____		
5. Private Claims _____		

*James J. [Signature]*  
 CLERK-REGISTER

LIBER 1 PG 1230

Register of Deeds Stamp & File Number

I, Allen H. McMachen a field survey on October 17, 19 94, do hereby certify that under requirements of P.A. 74, Michigan P.A. of 1970, the corner points mentioned in lines 1 and 2 above were in conformance with regulations and rules therefore as required in the current manual of survey instructions of the United States Department of the Interior, Bureau of Land Management or by a decree of a Court of Law and/or that the corner points mentioned in lines 3, 4 and 5 above were in conformance with the rules of the Michigan Board of Land Surveyors or by a Decree of a Court of Law; established, re-established, monumented, re-monumented, recovered, found as expressed below:

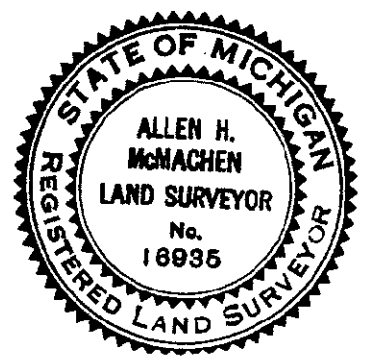


**NOTE: Not more than 4 corners, all in the same town and range, may be recorded on this certificate.**

A. Description of original monument and accessories and/or subsequent restoration:  
1880's - F. Hodgeman, C.S. Placed Clay Tile Post during official Township Remonumentation.

B. Description of corner evidence found and/or method applied in restoring or reestablishing corner:  
 Found broken Clay Tile in monument box.

RATIFIED  
 BY KALAMAZOO COUNTY  
 REMONUMENTATION  
 PEER GROUP  
 11-17-94



C. Description of monument for corner and accessories established to perpetuate locating the position of the corner:  
 Found Clay Tile is accepted as a careful and faithful perpetuation of the original corner. Removed broken Tile and placed Harrison Monument and Monument box cover; Accessories:

- Nail & Tab in Utility Pole N. 08° W. 56.99'
- Nail & Tab in 18" Cherry N. 56° E. 91.53'
- Nail & Tab in Utility Pole S. 28° E. 73.69'
- Nail & Tab in 12" Spruce S. 40° W. 28.00'

Signed by Allen H. McMachen Date 12/7/94  
 Surveyor's Michigan License No. 16935