

**SURVEY & REMONUMENTATION**

7.  
2-

JUL 23 1997

COMMISSION

LAND CORNER RECORDATION CERTIFICATE  
Filing Requirement of Act 74, Mich. P.A. 1970

LIBER

2 PAGE 122

For corners in Schoolcraft Twp.

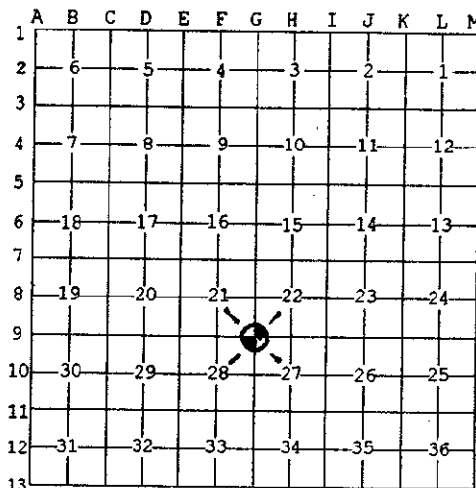
Kalamazoo (County)	Located In:	Corner Code #
1. Public Land Survey	T 4S R 11W	G-09
	T R	
	T R	
	T R	
	T R	
2. Property Controlling in Section	S T R	
	S T R	
3. Miscellaneous Property in Sec.	S T R	
	S T R	

STATE OF MICHIGAN  
COUNTY OF KALAMAZOO  
RECEIVED FOR RECORD  
97 APR 7 AM 9 20  
Clerk - Register  
Register of Deeds Stamp & File Number

4. Lot No. \_\_\_\_\_, Recorded Plat \_\_\_\_\_  
5. Private Claims \_\_\_\_\_

I, Robert E. Snell, in a field survey on Jan. 15, 1997 do hereby state that under requirements of P.A. 74, Michigan P.A. of 1970, the corner points mentioned in lines 1 and 2 above were in conformance with regulations and rules therefore as required in the current manual of survey instructions of the United States Department of the Interior, Bureau of Land Management or by a decree of a Court of Law and /or that the corner points mentioned in lines 3, 4 and 5 above were in conformance with the rules of the Michigan Board of Land Surveyors or by a Decree of a Court of Law; established, re-established, monumented, recovered, found as expressed below:

NOTE: Not more than 2 corners, all in the same town and range, may be recorded on this certificate.



A. Description of original monument and accessories and/or subsequent restoration:

1826: United States Government Surveyors; set post, corner to Sections 21, 22, 27 & 28.

Br. Oak 20" S. 36° E. 203 lks.  
Br. Oak 6" N. 72° E. 166 lks.

1889: F. Hodgman, County Surveyor; "Found stone of former survey (1873) in place and bearing tree Southeast standing. Set post."

B. Description of corner evidence found and/or method applied in restoring or reestablishing corner:

1944: Wilkins & Wheaton Engr. Co.; found tile, broken placed iron pipe with tile at bottom.

14" Oak S. 36° E. 43.6'  
12" Elm S. 15° E. 100.0'  
12" Oak Northwest 53.2'  
N. & S. Fence East 26.8'

1965: Wilkins & Wheaton Engr. Co.; found ok.

1997: Found 3" round tile in monument box.

**RATIFIED**  
**BY KALAMAZOO COUNTY**  
**REMONUMENTATION**  
**PEER GROUP**  
2-27-1997

C. Description of monument for corner and accessories established to perpetuate locating the position of the corner:

G-09: Southeast corner, Section 21, T. 4 S., R. 11 W., ratified by the Kalamazoo County Remonumentation Program Peer Group on February 27, 1997 and is accepted as a careful and faithful perpetuation of the position of the original corner. Found 3" round tile in monument box as set by F. Hodgman, County Surveyor in a 1889 Remonumentation Survey. Placed remonumentation sleeve over tile in monument box.

Set 1/2" iron/cap West side pavement S. 40° W. 28.33'  
PK Nail in South Side 8" Cedar N. 12° W. 117.53'  
Southwest Building Corner (Concrete) N. 59° E. 82.30'  
PK Nail in South Side 6" Box Elder East 52.48'

Signed by Robert E. Snell  
Surveyor's Michigan License No. 9734

Date 3-14-97