

**SURVEY &  
REMONUMENTATION**

FEB 18 1994

COMMISSION

**KALAMAZOO COUNTY REMONUMENTATION  
LAND CORNER RECORDATION CERTIFICATE**  
Filing Requirement of Act 74, Mich. P.A. 1970

STATE OF MICHIGAN  
COUNTY OF KALAMAZOO  
RECEIVED FOR RECORD

93 NOV 11 AM 8 54

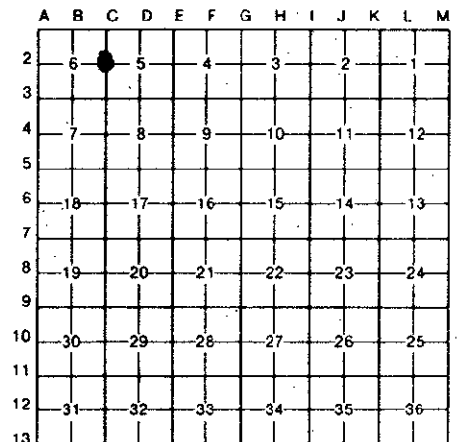
For corners in

<u>Kalamazoo</u> (County)	Located In:	Corner Code #
1. Public Land Survey	T <u>4S</u> R <u>12W</u>	C-2
	T _____ R _____	W 1/4 Cor.
	T _____ R _____	Sec. 5
	T _____ R _____	Prairie Ronde
2. Property Controlling in Section	S _____ T _____ R _____	Township
3. Miscellaneous Property in Sec.	S _____ T _____ R _____	

*Janet Spang*  
CLERK-REGISTER

LIBER **1 PG 1020**  
Register of Deeds Stamp & File Number

4. Lot No. \_\_\_\_\_, Recorded Plat \_\_\_\_\_  
5. Private Claims \_\_\_\_\_



I, Thomas W. Chettleburgh, in a field survey on October 15, 1993  
do hereby certify that under requirements of P.A. 74, Michigan P.A. of 1970, the corner points mentioned in lines 1 and 2 above were in conformance with regulations and rules therefore as required in the current manual of survey instructions of the United States Department of the Interior, Bureau of Land Management or by a decree of a Court of Law and/or that the corner points mentioned in lines 3, 4 and 5 above were in conformance with the rules of the Michigan Board of Land Surveyors or by a Decree of a Court of Law; established, re-established, monumented, re-monumented, recovered, found as expressed below:

**NOTE: Not more than 4 corners, all in the same town and range, may be recorded on this certificate.**

A. Description of original monument and accessories and/or subsequent restoration:

Strong 1873, Measured 40.28 ch (2658.48') from SW corner Section 5 to West 1/4 Corner Section 5  
Strong 1901, Set stone and brick by running East 1/2 of E-W 1/4 line Section 6 and doubling over at 1/8 post, corner located on West side of high roadway.  
W. Smith 1977, Set 5/8" iron on Westerly extension of line between East 1/4 corner Section 5 and Center of Section 5 and by doubling over at N-S 1/8 line (as determined by property irons and N-S fence)  
McMachen 1992, reset W. Smith iron from Witnesses.

B. Description of corner evidence found and/or method applied in restoring or reestablishing corner:

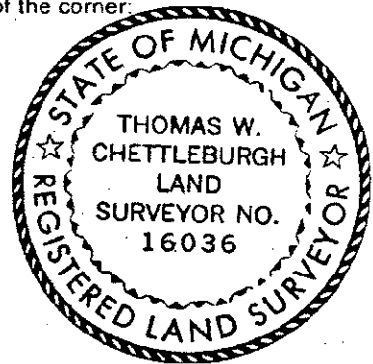
Found 5/8" iron as set by W. Smith and restored by McMachen  
Iron is 13' West of centerline of high roadway (15' ± above natural ground) and 2660.10' North of SW Corner Section 5.  
Also found iron in roadway 9.97' South & 14.83' East of W. Smith iron.  
Replace W. Smith iron with 4" X 30" Harrison Monument.

**RATIFIED  
BY KALAMAZOO COUNTY  
REMONUMENTATION  
PEER GROUP**

C. Description of monument for corner and accessories established to perpetuate locating the position of the corner:

**4" X 30" Harrison Monument**

Spike	NW	side	21" Elm	N30°E	91.35'
Spike	W	side	Power Pole	S15°E	65.84'
Spike	SE	side	24" Beech	S32°W	76.99'
Spike	SE	side	26" Beech	S46°W	67.54'
Spike	NW	side	28" Beech	S59°W	62.15'
Spike	S	side	36" Maple	S73°W	63.87'
Spike	NE	side	Power Pole	N35°W	70.14'



Signed by Thomas W. Chettleburgh Date November 8, 1993  
Surveyor's Michigan License No. 16036