

LAND CORNER RECORDATION CERTIFICATE  
Filing Requirement of Act 74, Mich. P.A. 1970

95 AUG 25 PM 3 51

For corners in  
Kalamazoo

Located In:	Corner Code #
T 4 S R 12 W	D-7
T _____ R _____	_____
T _____ R _____	_____
T _____ R _____	_____
T _____ R _____	_____
S _____ T _____ R _____	_____
S _____ T _____ R _____	_____
S _____ T _____ R _____	_____
S _____ T _____ R _____	_____

*James J. Jones*  
CLERK-REGISTER

LIBER 1 1329

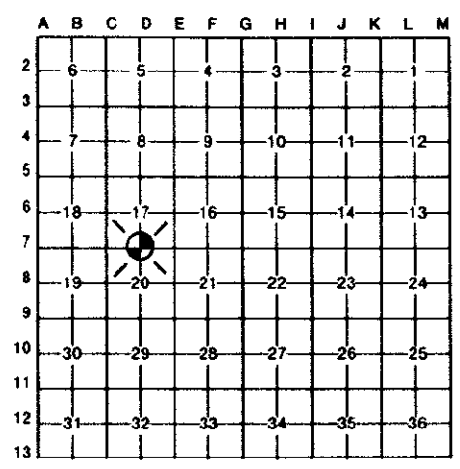
Register of Deeds Stamp & File Number

(County)  
Prairie Ronde Township

- 1. Public Land Survey
- 2. Property Controlling in Section
- 3. Miscellaneous Property in Sec.

- 4. Lot No. \_\_\_\_\_, Recorded Plat \_\_\_\_\_
- 5. Private Claims \_\_\_\_\_

I, Robert E. Snell, in a field survey on May 20, 19 94, do hereby certify that under requirements of P.A. 74, Michigan P.A. of 1970, the corner points mentioned in lines 1 and 2 above were in conformance with regulations and rules therefore as required in the current manual of survey instructions of the United States Department of the Interior, Bureau of Land Management or by a decree of a Court of Law and/or that the corner points mentioned in lines 3, 4 and 5 above were in conformance with the rules of the Michigan Board of Land Surveyors or by a Decree of a Court of Law; established, re-established, monumented, re-monumented, recovered, found as expressed below:



**NOTE: Not more than 4 corners, all in the same town and range, may be recorded on this certificate.**

A. Description of original monument and accessories and/or subsequent restoration:

1829: United States Government Survey; Set 1/4 Section Post.  
Beech 12" North 38° West 18 Lks  
Bl. Ash 18" South 68 1/2° West 14 Lks

1872: S. Hodgman, County Surveyor; Stake set by one witness at edge of causeway. Marked  
Elm 16" North 09 1/2° East 21 1/2 Lks  
Birch 18" South 08° East 79 Lks

B. Description of corner evidence found and/or method applied in restoring or reestablishing corner: (Reestablished Corner)

1973: J. Corbit, RLS #2101; In a survey recorded in L. 1, P. 361, shows reestablished South 1/4 Post Section 17, T. 4 S., R. 12 W.

1982: A. McMachen, RLS #16935; In a survey recorded in L.1, P. 1388, shows using restablished corner.

1995: Wilkins & Wheaton Engineering, R.E. Snell, RLS #9734; Ran from Southeast Corner Section 17, T. 4 S., R. 12 W. to found iron at South 1/4 Post and to Southwest Corner as Ratified/Recorded, L. 1, P. 1189, LCRC Kalamazoo County.

Meas. From Southeast Corner to South 1/4 Post = 2,661.68'  
From Southwest Corner to South 1/4 Post = 2,662.31'  
1973 J. Corbit Meas. From Southeast Corner to South 1/4 Post = 2,661.63'  
From Southwest Corner to South 1/4 Post = 2,661.64'

**RATIFIED**  
**BY KALAMAZOO COUNTY**  
**REMONUMENTATION**  
**PEER GROUP**  
5-18-95  
*R.E.S.*

C. Description of monument for corner and accessories established to perpetuate locating the position of the corner:

D-7 South 1/4 Post Section 17, T. 4 S., R. 12 W., Ratified by Kalamazoo County Remonumentation Program Peer Group on May 18, 1995 and is a careful and faithful reestablishment of the position of the original corner. Found 1/2" x 18" Rerod at surface at 3' depth. Found a carriage bolt to Southeast, dug to level of peat (7'-8'±) and found nothing else. Placed a 20" Harrison monument at location of found iron and placed monument box over.

Iron Rerod North 38° East 19.29'  
Exist. PK Nail in North Side Power Pole South 70° East 213.74'  
Exist. PK Nail in East Side 10" Willow South 18° East 32.91'  
Exist. PK Nail in North Side 8" Willow North 78° West 90.38'

Signed by *Robert E. Snell*  
Surveyor's Michigan License No. 9734

Date 8-22-95