

JAN 12 1996

COMMISSION

LAND CORNER RECORDATION CERTIFICATE
Filing Requirement of Act 74, Mich. P.A. 1970

LIBER 003 PAGE 0333

For corners in

Lake (County)	Located In:	Corner Code #
1. Public Land Survey	T 17N R 13W	H-3
	T R	
	T R	
	T R	
	T R	
2. Property Controlling in Section	S T R	
	S T R	
3. Miscellaneous Property in Sec.	S T R	
	S T R	

REGISTER OF DEEDS

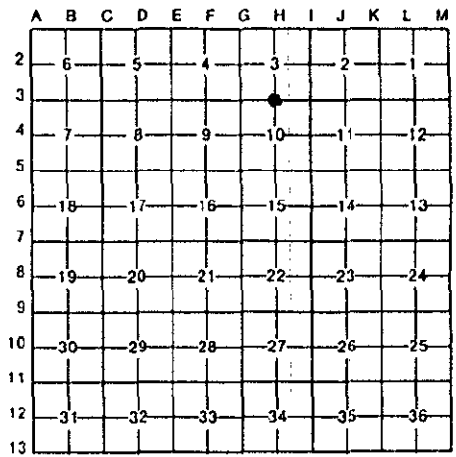
OCT 30 2 45 PM 1995

LAKE COUNTY, MI.

RECORDED

Register of Deeds Stamp & File Number

- 4. Lot No. _____, Recorded Plat _____
- 5. Private Claims _____



I, Robert L. Wetherell, in a field survey on September 7, 1995, do hereby certify that under requirements of P.A. 74, Michigan P.A. of 1970, the corner points mentioned in lines 1 and 2 above were in conformance with regulations and rules therefore as required in the current manual of survey instructions of the United States Department of the Interior, Bureau of Land Management or by a decree of a Court of Law and/or that the corner points mentioned in lines 3, 4 and 5 above were in conformance with the rules of the Michigan Board of Land Surveyors or by a Decree of a Court of Law; established, re-established, monumented, re-monumented, recovered, found as expressed below.

NOTE: Not more than 4 corners, all in the same town and range, may be recorded on this certificate.

A. Description of original monument and accessories and/or subsequent restoration:

- H-3 - 1/4 corner common to Sections 3 and 10, T17N, R13W.
 - 1838 - John Hodgson, G.L.O. #1 - 8" Hemlock N37°E 9 Links #2 - 4" B. Ash S5°W 7 Links
 - 1898 - Charles Holmes, Surveyor Platted "J.F. Gray's Addition "A" to Village of Baldwin. Showed this corner at the S.E. cor. of Plat.
 - 1940 - George Blass, LS 5489 Found rotted cedar stake and iron cant hook 4' below ground level raised to surface with 1" pipe. In 1966 re-witnessed: #3 - P. Pole West 16.36' #4 - 8" Birch N.E. 76.50' #5 - P. Pole East 38.01' #6 - N. end bridge abutments 163.2' centerline M-37 East 15'

B. Description of corner evidence found and/or method applied in restoring or reestablishing corner: (SEE OVER FOR CONTINUATION OF "A")

H-3 - 1/4 corner common to Sections 3 and 10, T17N, R13W.

I found a 1/2" iron rod 12" below the surface of black top. I was not able to recover any of the accessories stated above, due to the re-construction of the bridge over the Baldwin creek in 1994. I did recover the C.1/4 corner and several monuments placed by Surveyor Cole and Surveyor Blass that fit well with the 1/2" iron found. The corner is approximately 170' North of the Baldwin River and is 15' West of the centerline of Highway M-37. There is approximately 10' of fill in this area for the approach to the bridge over the Baldwin River.

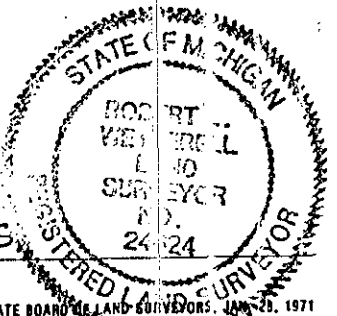
C. Description of monument for corner and accessories established to perpetuate locating the position of the corner:

H-3 - 1/4 corner common to Sections 3 and 10, T17N, R13W.

I replaced the 1/2" rod with a 3/4" x 24" re-bar with Lake County Brass Cap, and is accepted as a careful and faithful re-establishment of the position of the original corner.

10" W. Pine N68°W 71.83' (60d spike in N. side)
 24" B. Oak N26°W 122.43' (60d spike in E. side)
 24" W. Oak S88°E 127.72' ((60d spike in S. side)
 P.I. of curve (1/2" iron in monument box) North 163.88'
 Guard rail post N59°E 54.51' (P.K. Nail in top)

Signed by Robert L. Wetherell Date 10-26-95
 24624



Surveyor's Michigan License No. _____
 RATIFIED BY THE LAKE CO. PEER REVIEW GROUP
 IN ACCORDANCE WITH P.A. 345
 CHAIRMAN R.L.W.
 DATE 10-23-95

CONTINUATION OF "A" - DESCRIPTION OF ORIGINAL MONUMENT AND ACCESSORIES AND/OR SUBSEQUENT RESTORATION:

1946 - George Blass, L.S. 5489

Survey dated August 16, 1946: Surveyed a parcel of land beginning 745' South and 620' West of this corner. Map on File at the office of Wetherell Land Surveying.

1957 - George Blass, L.S. 5489

Surveyed several parcels in the E.1/2 of N.W.1/4, Sec. 10. Blass Survey File No. 453 on file at the office of Wetherell Land Surveying.

1971 - George Blass, L.S. 5489

Survey recorded in Liber 1, Page 42
#3 - P. Pole N85°W 16.35'
#6 - Guard Rail Post S10°W 74.65'
#7 - N.W. corner bridge abutment S.W. 145.91'

1972 - Clinton Cole, L.S. 17615

1" Pipe (Survey recorded in Liber 1, Page 40)
#3 - P. Pole West 16.36'
#4 - 8" Birch N.E. 76.50'
#5 - P. Pole East 38.01'

LIBER 003 PAGE 0334

SURVEY &
REMONUMENTATION

JAN 12 1996

COMMISSION