

NOV 15 1994

COMMISSION

LAND CORNER RECORDATION CERTIFICATE
Filing Requirement of Act 74, Mich. P.A. 1970

LIBER 003 PAGE 0254

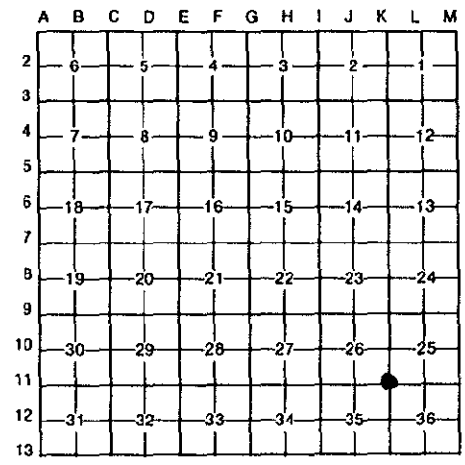
For corners in

(County)	Located In:	Corner Code #
1. Public Land Survey	T 18N R 11W	K-11
	T _____ R _____	_____
	T _____ R _____	_____
	T _____ R _____	_____
2. Property Controlling in Section	S _____ T _____ R _____	_____
	S _____ T _____ R _____	_____
3. Miscellaneous Property in Sec.	S _____ T _____ R _____	_____
	S _____ T _____ R _____	_____

REGISTERED
LAKE COUNTY, MI.
OCT 27 3 24 PM '94
REGISTER OF DEEDS
Register of Deeds Stamp & File Number

4. Lot No. _____, Recorded Plat _____
5. Private Claims _____

I, Robert L. Wetherell, in a field survey on October 11, 1994, do hereby certify that under requirements of P.A. 74, Michigan P.A. of 1970, the corner points mentioned in lines 1 and 2 above were in conformance with regulations and rules therefore as required in the current manual of survey instructions of the United States Department of the Interior, Bureau of Land Management or by a decree of a Court of Law and/or that the corner points mentioned in lines 3, 4 and 5 above were in conformance with the rules of the Michigan Board of Land Surveyors or by a Decree of a Court of Law; established, re-established, monumented, re-monumented, recovered, found as expressed below:



NOTE: Not more than 4 corners, all in the same town and range, may be recorded on this certificate.

A. Description of original monument and accessories and/or subsequent restoration:

- K-11 - Section corner common to Sections 25, 26, 35 & 36, T18N, R11W, Lake County, Mi.
 1838 - John Hodgson, D.S., G.L.O. Undated - George Johnson, Sur.
 #1 - 16" Birch N43°E 12 Links (before 1920's)
 #2 - 16" Birch S73°W 22 Links #3 - School House S58°W 99 Feet
- 1891 - A.O. Temple, Surveyor
 #3 - School House S58°W 150 Links
 North 1/4 Section 36 - East - 39.65 Chains
 West 1/4 Section 36 - South - 39.89 Chains

- 1974 - Clinton E. Cole, LS 17615
 5/8" Re-bar
 #4 - Utility Pole N45°E 83.31'
 #5 - Telephone Pole S45°E 44.69'
 #6 - Utility Pole S52°W 42.60'

B. Description of corner evidence found and/or method applied in restoring or reestablishing corner:

K-11 - Section corner common to Sections 25, 26, 35 & 36, T18N, R11W, Lake County, Mi.

I found 5/8" x 18" re-bar. I removed the re-bar and found 1" x 30" slotted shaft directly under re-bar. I measured a distance to the North 1/4 of Section 36 of 2614.4' and to the West 1/4 of Section 36 of 2629.1'. I measured S63°W 100.35' to the Northeast corner of old School House. I accepted this position for the corner. Condition of the accessories are as follows: #1 Gone, #2 gone, #3 Found in good condition, #4 Found in good condition, #5 Found in good condition, #6 Gone.

C. Description of monument for corner and accessories established to perpetuate locating the position of the corner:

K-11 - Section corner common to Sections 25, 26, 35 & 36, T18N, R11W, Lake County, Mi.

I replaced the re-bar and shaft with a 3/4" x 24" re-bar with Lake County Brass Cap, and is accepted as a careful and faithful re-establishment of the position of the original corner.

- 14" W. Pine S33°W 148.49' (60d spike in East side of tree)
 Northeast corner of School House S63°W 100.35' (#3)
 11" W. Pine S76°W 76.32' (60d spike in South side of tree)
 9" Elm N73°E 76.29' (60d spike in South side of tree).



Signed by Robert L. Wetherell Date 10-26-94
 Surveyor's Michigan License No. LS 24624

RATIFIED BY THE LAKE CO. PEER REVIEW GROUP
 IN ACCORDANCE WITH P.A. 345
 CHAIRMAN Q.L.W.
 DATE 10-25-94