

SURVEY & REMONUMENTATION

MAY 18 1998

LIBER 004 PAGE 0129

SECTION

LAND CORNER RECORDATION CERTIFICATE
Filing Requirement of Act 74, Mich. P.A. 1970

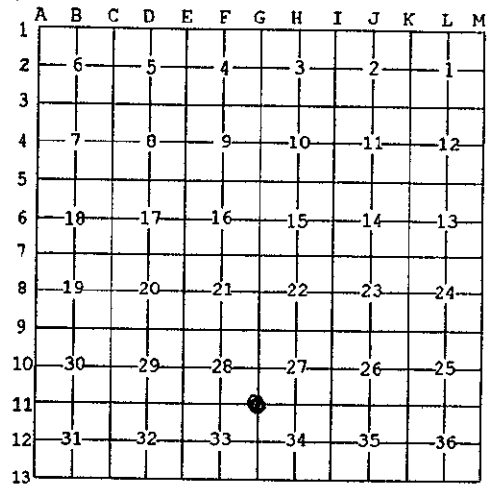
For corners in Lake

Table with columns: Located In: (County), Corner Code #, and rows for Public Land Survey, Property Controlling in Section, and Miscellaneous Property in Sec.

REGISTER OF DEEDS LAKE COUNTY, MI. APR 14 3 05 PM 1998. Includes stamp and signature of Register of Deeds.

4. Lot No. , Recorded Plat
5. Private Claims

I, Robert L. Wetherell, in a field survey on March 18, 1998 do hereby state that under requirements of P.A. 74, Michigan P.A. of 1970, the corner points mentioned in lines 1 and 2 above were in conformance with regulations and rules therefore as required in the current manual of survey instructions of the United States Department of the Interior, Bureau of Land Management or by a decree of a Court of Law and for that the corner points mentioned in lines 3, 4 and 5 above were in conformance with the rules of the Michigan Board of Land Surveyors or by a Decree of a Court of Law; established, re-established, monumented, recovered, found as expressed below:



NOTE: Not more than 2 corners, all in the same town and range, may be recorded on this certificate.

A. Description of original monument and accessories and/or subsequent restoration:

G-11 - Section corner common to Sections 27, 28, 33 & 34, T18N, R12W, Cherry Valley Twp., Lake Co., Mi.

- 1838 - J. Hodgson, G.L.O. #1 - 10" Pine S9-1/4°E 5.16 Links #2 - 7" B. oak N33°E 55 Links
Undated - G. Johnson, Co. Sur. Iron Pipe #3 - 8" B. Oak N44°E 42' #4 - 7" B. Oak S64°E 58'
1922 - G. Johnson, Co. Sur. Developed plat of "Thompson's Villa". No accessories given. This corner is the S.E. corner of plat.

(SEE REVERSE SIDE OF INSTRUMENT FOR CONTINUATION OF "A")

B. Description of corner evidence found and/or method applied in restoring or reestablishing corner:

G-11 - Section corner common to Sections 27, 28, 33 & 34, T18N, R12W, Cherry Valley Twp., Lake Co., Mi.

I found Griffin's 5" Concrete post in the intersection of road North, South, East and West. I also found a 1/2" iron pipe N27°29'E 3.72 feet from Griffin's post. I found monumentation from the plat of "Thompson's Villa" that confirms Johnson used this pipe in 1922. I also found monumentation in the plat of "Blass Park" (developed by George Johnson in 1924) in Section 33 that confirms Johnson used the position by Griffin. I believe the pointed stone and iron probably pre-date 1922 so I accepted Griffin's 5" Concrete Monument as the correct location.

Condition of the accessories are as follows: #1 Gone, #2 Gone, #3 Found in poor condition, #4 Gone, #5 Found in good condition, #6 Found dead, #7 Found in good condition, #8 Gone.

C. Description of monument for corner and accessories established to perpetuate locating the position of the corner:

G-11 - Section corner common to Sections 27, 28, 33 & 34, T18N, R12W, Cherry Valley Twp., Lake Co., Mi.

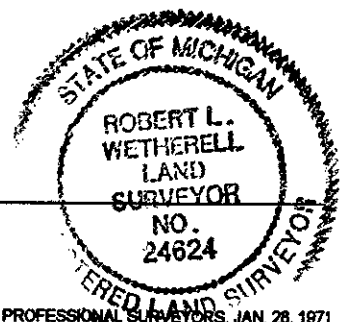
I accepted the 5" Concrete Monument as a substantial marker for the corner, and is accepted as a careful and faithful re-establishment of the position of the original corner.

RATIFIED BY THE LAKE CO. PEER REVIEW GROUP IN ACCORDANCE WITH P.A. 345 CHAIRMAN R.S.W. DATE 4-9-98

- 29" W. Pine N46°E 114.32' (60d spike in S.E. side) #7
11" W. Oak N44°W 54.80' (dock spike in S. side) #5
5" R. Pine S54°W 111.17' (60d spike in N.W. side)
7" W. Pine N83°E 107.74' (60d spike in S. side)
Power Pole S54°E 77.35' (nail and tag in N. side) #9

Signed by Robert L. Wetherell
Surveyor's Michigan License No. 24624

Date 4-14-98



SURVEY &  
REMONUMENTATION

MAY 18 1998

SECTION

LIBER 004 PAGE 0130

CONTINUATION OF "A" - DESCRIPTION OF ORIGINAL MONUMENT AND ACCESSORIES AND/OR SUBSEQUENT RESTORATION:

1924 - G. Johnson, County Surveyor

Used this corner to develop the plat  
of "Blass Park" in Section 33.

1941 - George Blass, LS 5489

Developed unrecorded "Mary Mills Sub."

Found pointed stone and iron

#5 - 4" W. Oak N50°W 54.60'

#6 - 10" B. Oak S31°W 69.30'

#3 - 16" Tw. B. Oak N43°E 45.40'

Undated - Frank Jones - Unlicensed Surveyor

#3 - 12" B. Oak N35°E 45'-9"

#4 - B. Oak S62°E 58'

1965 - Robert Griffin, LS 13584

L.C.R.C. - Liber 01, Pg. 61

"Found pointed stone and iron. Replaced with 5" Square Concrete Post.

#7 - 23" W. Pine N39°E 114.32'

#3 - 19" Tw. B. Oak N43°E 46.00'

#6 - 17" B. Oak S31°W 69.55'

#5 - 7" W. Oak N50°W 54.72'

#8 - Post S45°E 46.7'

#9 - Power Pole S60°E 77.37'

1978 - Carl Roser, LS 12028

L.C.R.C. - Liber 02, Pg. 337

Found U.S.F.S. Monument

#5 - 8" W. Oak N45°W 54.73'

#7 - 27" W. Pine N40°E 114.27'

#6 - 18" B. Oak S32°W 69.50'

#8 - Post S45°E 46.6'