

STATE OF MICHIGAN
DEPARTMENT
OF
NATURAL RESOURCES

LAND CORNER RECORD

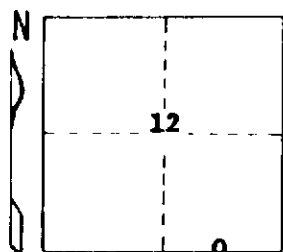
LAKE COUNTY
T 18 N R 13 ~~12~~ W

DESCRIPTION OF CORNER East 1/16 on South line - Section 12

CORNER MONUMENT Set 1" x 30" pipe, buried 6"

DATE MONUMENT PLACED AND WITNESSED XX 6-30-72

WITNESSES TO CORNER..... 7" B. Oak N 56 W 67.9'



7" J. Pine N 05 W 45.5'

Set cedar post & location tag Due N 33'

AND CL E-W rd. Due N 2'

CIRCLE CORNER REGISTERED

DESCRIPTION IN DETAIL AS TO HOW CORNER WAS LOCATED AND IDENTIFIED OR RESTORED.

Corner established by proportionate measurement.



SIGNED

Carl F. Rose

DATE

7-7-72

REGISTERED LAND SURVEYOR 12028

DISTRIBUTION:

Forestry Division, Lansing