

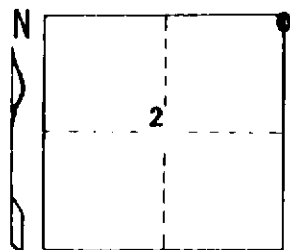
STATE OF MICHIGAN  
DEPARTMENT  
OF  
NATURAL RESOURCES

LAND CORNER RECORD

LAKE COUNTY  
T 18 N R 13 W

DESCRIPTION OF CORNER NE corner - Section 2  
CORNER MONUMENT Found 3/4" x 20" iron pin & set Dept. monument 10" deep in ctr.  
E-W sand trail and on CL of sand trail to North.  
DATE MONUMENT PLACED AND WITNESSED 6-30-72

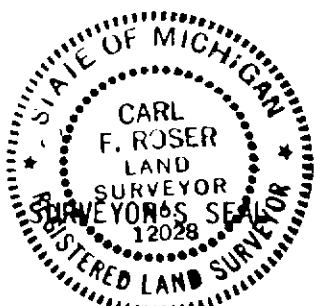
WITNESSES TO CORNER.....	10" B. Oak	N 51 E	55.1'
	13" B. Oak	N 28 W	65.9'
	10" B. Oak	S 46 W	63.4'
	3" W. Pine	S 25 E	46.0'
	AND Cedar post & location tag	Due S	33'



CIRCLE CORNER REGISTERED

DESCRIPTION IN DETAIL AS TO HOW CORNER WAS LOCATED AND IDENTIFIED OR RESTORED.

**Recovered existing corner of record.**



SIGNED

*Carl F. Roser*

DATE

7-7-72

REGISTERED LAND SURVEYOR 12028

DISTRIBUTION:

Forestry Division, Lansing