

STATE OF MICHIGAN
DEPARTMENT
OF
NATURAL RESOURCES

LAND CORNER RECORD

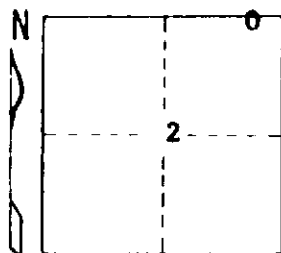
LAKE COUNTY
T 18 N R 13 W

DESCRIPTION OF CORNER East 1/16 on North line - Section 2

CORNER MONUMENT Set 1" x 36" pipe flush & cedar guard post with location tag

DATE MONUMENT PLACED AND WITNESSED 6-30-72

WITNESSES TO CORNER..... 10" B. Oak S 40 E 12.8'



8" B. Oak S 83 W 41.2'

CL Sand Rd. Due S 26.0'
C NE & W

AND

CIRCLE CORNER REGISTERED

DESCRIPTION IN DETAIL AS TO HOW CORNER WAS LOCATED AND IDENTIFIED OR RESTORED.

Corner established by proportionate measurements between Section corner East and 1/4 corner West.



SIGNED

Carl F. Roser

DATE

7-7-72

DISTRIBUTION:

REGISTERED LAND SURVEYOR 12028

Forestry Division, Lansing