

STATE OF MICHIGAN  
DEPARTMENT  
OF  
NATURAL RESOURCES

LAND CORNER RECORD

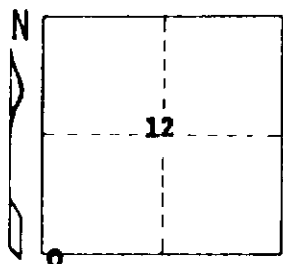
LAKE COUNTY  
T 18 N R 13 W

DESCRIPTION OF CORNER SW Corner - Section 12

CORNER MONUMENT Found 1 1/4" x 1.3' iron pin & old stake point. Added standard Dept. monument, buried 10"

DATE MONUMENT PLACED AND WITNESSED 6-30-72

WITNESSES TO CORNER.....			
12" J. Pine	N 40 E	42.4'	
14" J. Pine	N 13 W	75.6'	
18" B. Oak	S 30 W	71.4'	
23" B. Oak	S 28 E	46.1	
Sat cedar post w/ location tag	N 45 W	33'	

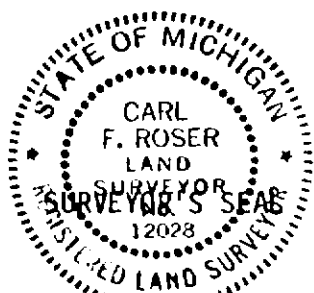


AND

CIRCLE CORNER REGISTERED

DESCRIPTION IN DETAIL AS TO HOW CORNER WAS LOCATED AND IDENTIFIED OR RESTORED.

**Recovered existing corner from previous Blass survey of record.**



SIGNED

*Carl F. Roser*

DATE

7-7-72

DISTRIBUTION:

REGISTERED LAND SURVEYOR 12028

Forestry Division, Lansing