

STATE OF MICHIGAN
DEPARTMENT
OF
NATURAL RESOURCES

LAND CORNER RECORD

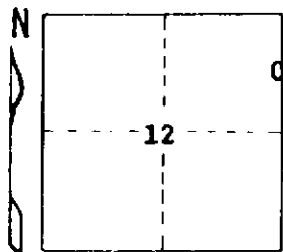
LAKE COUNTY
T 18 N R 13 W

DESCRIPTION OF CORNER North 1/16 on East Line, Section 12

CORNER MONUMENT Set 1" x 36" pipe (buried) in approx. ctr. of N-S dirt road.

DATE MONUMENT PLACED AND WITNESSED 6-28-72

WITNESSES TO CORNER..... 15" Oak S 78 E 54.4'



6" Oak N 50 E 68.3'

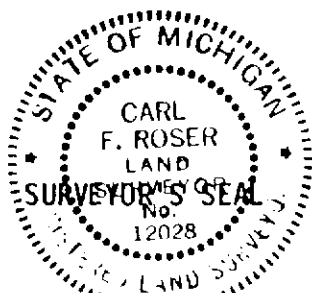
Set ced. post Due W 33'

AND

CIRCLE CORNER REGISTERED

DESCRIPTION IN DETAIL AS TO HOW CORNER WAS LOCATED AND IDENTIFIED OR RESTORED.

Corner established per standard BLM instructions.



DISTRIBUTION:

SIGNED

Carl F. Roser

DATE

7-5-72

REGISTERED LAND SURVEYOR 12028

Forestry Division, Lansing