

STATE OF MICHIGAN
DEPARTMENT
OF
NATURAL RESOURCES

LAND CORNER RECORD

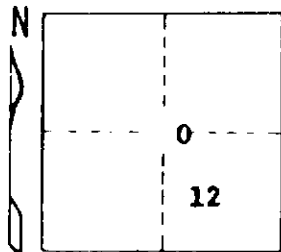
LAKE COUNTY
T 18 N R 13 W

DESCRIPTION OF CORNER NE corner of E 1/2 - W 1/2 - E 1/2 - NW 1/4 - SE 1/4 of S 12

CORNER MONUMENT Set 1" x 36" pipe and cedar guard post

DATE MONUMENT PLACED AND WITNESSED 6-28-72

WITNESSES TO CORNER..... 12" J.P. N 37 W 22.4'



22" Oak S 05 W 45.2'

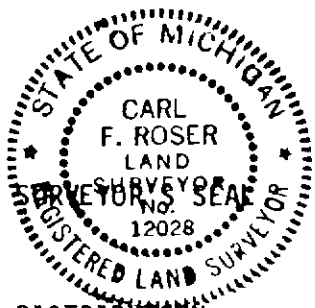
ctr. E-W trail rd. Due S 13'

AND

CIRCLE CORNER REGISTERED

DESCRIPTION IN DETAIL AS TO HOW CORNER WAS LOCATED AND IDENTIFIED OR RESTORED.

Established the NE corner of E 1/2 - W 1/2 - E 1/2 - NW 1/4 - SE 1/4 of Sec. 12 - 1602.8' West of M-4 and 961.7' East of L-4.



SIGNED

Carl F. Roser

DATE

7-5-72

DISTRIBUTION:

REGISTERED LAND SURVEYOR 12028

Forestry Division, Lansing