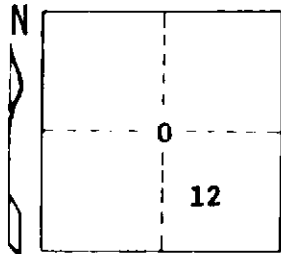


STATE OF MICHIGAN  
DEPARTMENT  
OF  
NATURAL RESOURCES

LAND CORNER RECORD

LAKE \_\_\_\_\_ COUNTY \_\_\_\_\_  
T 18 N R 13 W

DESCRIPTION OF CORNER Center of Section 12  
CORNER MONUMENT Set 1" x 36" pipe buried 0.5' in approx. ctr. of E-W dirt road  
DATE MONUMENT PLACED AND WITNESSED 6-28-72  
WITNESSES TO CORNER..... 9" Oak S 30 W 47.3'

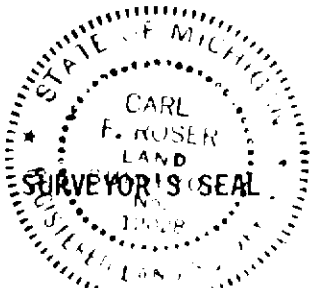


16" Oak S 68 W 69.4'  
Set ced. post Due N 33'  
AND

CIRCLE CORNER REGISTERED

DESCRIPTION IN DETAIL AS TO HOW CORNER WAS LOCATED AND IDENTIFIED OR RESTORED.

Corner established at intersection of N-S & E-W 1/4 lines.



DISTRIBUTION:

SIGNED

*Carl F. Roeser*

DATE

7-5-72

REGISTERED LAND SURVEYOR 12028

Forestry Division, Lansing