

STATE OF MICHIGAN
DEPARTMENT
OF
NATURAL RESOURCES

LAND CORNER RECORD

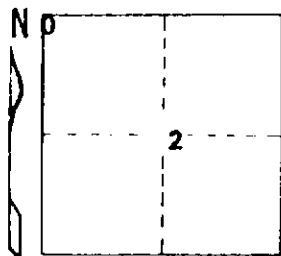
LAKE COUNTY
T 18 N R 13 W

DESCRIPTION OF CORNER NW corner, Section 2

CORNER MONUMENT Fd. R.R. spk. in Westerly edge of M-37 B. Top

DATE MONUMENT PLACED AND WITNESSED 6-28-72

WITNESSES TO CORNER..... Ctr. M-37 Due E 11'



U.S.F.S. Mon. Due W 5.94'

AND

CIRCLE CORNER REGISTERED

DESCRIPTION IN DETAIL AS TO HOW CORNER WAS LOCATED AND IDENTIFIED OR RESTORED.

Recovered R.R. spike in Westerly edge of M-37 blacktop at record U.S. distance East of SW corner of Section 35, T19N - R13.



DISTRIBUTION:

SIGNED

Carl F. Rose

DATE

7-5-72

REGISTERED LAND SURVEYOR 12028

Forestry Division, Lansing