

STATE OF MICHIGAN  
DEPARTMENT  
OF  
NATURAL RESOURCES

LAND CORNER RECORD

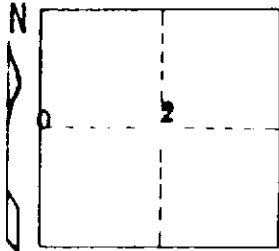
LAKE \_\_\_\_\_ COUNTY \_\_\_\_\_  
T 18 N R 13 W

DESCRIPTION OF CORNER West 1/4 Corner, Section 2  
CORNER MONUMENT Fd. dock spk. in M-37 (BTop), apparently over Forest Ser. monument

DATE MONUMENT PLACED AND WITNESSED 5-10-72

WITNESSES TO CORNER.....

* Dock spk in W. Oak 8"	N 72 W	125.96
* Dock spk in Oak 6"	S 52 W	154.46'
* Painted ctr. line M-37	East	2½'



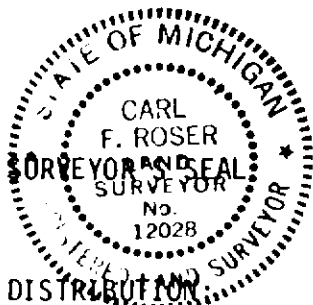
AND

CIRCLE CORNER REGISTERED

\* B. Griffin's BTs

DESCRIPTION IN DETAIL AS TO HOW CORNER WAS LOCATED AND IDENTIFIED OR RESTORED.

**Recovered U.S. Forest Service monument of record.**



SIGNED

*Carl F. Roser*  
REGISTERED LAND SURVEYOR 12028

DATE 5-17-72

Forestry Division, Lansing