

LAND CORNER RECORDATION CERTIFICATE
Filing Requirement of Act 74, Mich. P.A. 1970

For corners in
LAKE

(County)	Located In:	Corner Code //
1. Public Land Survey	T. 18N R. 13W	K-12, L-12
	T. R.	L-13
	T. R.	
	T. R.	
2. Property Controlling in Section	S. 36 T. R.	15
	S. T. R.	
3. Miscellaneous Property in Sec.	S. T. R.	
	S. T. R.	

Register of Deeds Stamp & File Number

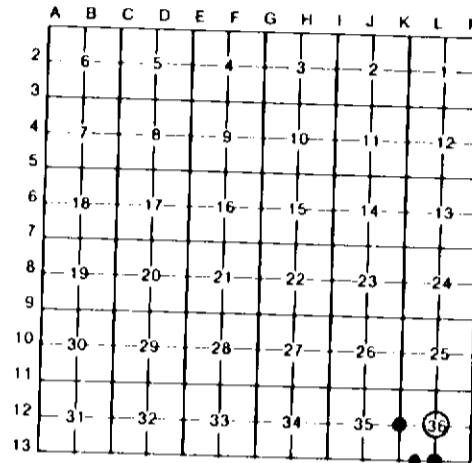
4. Lot No. _____, Recorded Plat _____
 5. Private Claims _____

I, CARL T. KIISKILA, in a field survey on JUNE 5, 19 95, do hereby certify that under requirements of P.A. 74, Michigan P.A. of 1970, the corner points mentioned in lines 1 and 2 above were in conformance with regulations and rules therefore as required in the current manual of survey instructions of the United States Department of the Interior, Bureau of Land Management or by a decree of a Court of Law and/or that the corner points mentioned in lines 3, 4 and 5 above were in conformance with the rules of the Michigan Board of Land Surveyors or by a Decree of a Court of Law, established, re-established, monumented, re-monumented, recovered, found as expressed below

NOTE: Not more than 4 corners, all in the same town and range, may be recorded on this certificate.

A. Description of original monument and accessories and/or subsequent restoration:

K-12	L-12	L-13
(NO EVIDENCE OF G.L.D. CORNER, B.T.'S, LINE TREES & TOPOGRAPHY, AS CALLED OUT IN THE G.L.D. LINE NOTES; UNLESS NOTED IN ITEM "B" BELOW.)		-- B CONT. -- (AT CADILLAC & LANSING) AND FOUND NOTHING ON THE S 1/4 COR OF SEC. 36.



B. Description of corner evidence found and/or method applied in restoring or reestablishing corner.

K-12	L-12	L-13	15
FOUND BRASS CAPPED MON. (STAMPED "GEORGE BLASS #5489") FOR W 1/4 CORNER OF SEC. 36. N'LY EDGE OF LITTLE LEVERENTZ LAKE IS 28' ± 5' SOUTH (WITH BRUSH AND A FEW LARGE TREES 60' TO 85' FURTHER SOUTH - US GLO CALLED FOR ONE CHAIN FROM 1/4 COR. TO EDGE OF LAKE).	REESTABLISHED CTR OF SEC. 36 ON LINE AND DOUBLE DOWN DIST. FROM FD 1/8 COR. TO NORTH AND FD N 1/4 COR SEC. 36. THIS FITS RLS G. BLASS 1972 SUB'D OF SEC. 36 AND PS C. COLE SURVEY IN NE 1/4 OF S-36. CTR OF N-S SAND ROAD IS 1' EAST.	REESTABLISHED S 1/4 COR. S-36 ON LINE AND PROPORTIONATE MEAS TO RLS G. BLASS 1972 SUR. IN S-36, BETW. FD SE COR S-36 & FD W 1/8 ON SOUTH LINE OF S-36. THIS POSITION FITS CERT. OF SURVEY'S IN S-36 BY P.S. R. WETHERELL & C. COLE. CTR. OF US-10 IS 2' NORTH. POWER POLE WIT TO SE HAS A NAIL W/MSHD TAG, MDDT SEARCHED THEIR RECORDS -- CONT. ABOVE --	FD 1/2" REROD W/C. COLE PS CAP FOR SW COR OF SE 1/4 OF FRL. SW 1/4 OF SEC. 36. CORNER FITS C. COLE CERT. OF SURVEY, LT. 02, PAGE 47 AND G. BLASS 1972 SUB'D. OF SEC. 36.

C. Description of monument for corner and accessories established to perpetuate locating the position of the corner:

K-12	L-12	L-13	15
FD. 4" BRASS CAPPED MON. ADDED CEDAR POST.	DROVE 5/8" x 34" REROD W/PS CAP.	DROVE LONG PK W/BRASS WASHER.	FD 1/2" REROD W/PS CAP AND SET CEDAR POST W/LOC TAG.
120" W. OAK N30°W 12.00'	10" R. PINE N50°W 56.76'	3" MAPLE N20°W 59.50'	CEDAR POST W/LOC TAG.
117" OAK N44°E 30.00'	38" B. OAK N65°E 59.12'	POWER POLE S40°E 85.23'	9" W. PINE N55°E 25.02'
115" W. PINE S42°E 32.35'	5" W. PINE S35°E 72.98'	8" W. PINE S10°E 118.84'	4" ELM S40°E 21.75'
4" W. PINE S25°W 14.30'	9" MAPLE (CLP-4) S70°W 33.35'	POWER POLE S60°W 137.73'	3" ELM S20°W 24.14'
	SET CEDAR POST WITH LOCATION TAG EAST 33'	DROVE 5/8" x 34" REROD W/PS CAP & SET CED. POST WITH LOC. TAG. N00°40'E 75.00'	CTR OF US-10, IN CURVE, S. 78' FD 3/4" "T" IRON W/RLS TAG EAST 3.6'

= RLS G. BLASS 1960 WIT.

Signed by Carl T. Kiiskila

Date 12-5-95

Surveyor's Michigan License No. 33981