

JAN 12 1996

COMMISSION

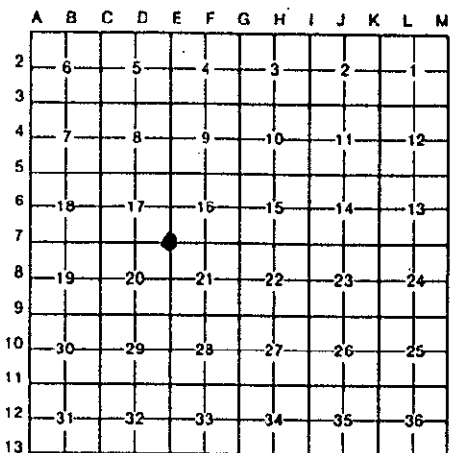
LAKE COUNTY REMONUMENTATION
LAND CORNER RECORDATION CERTIFICATE
Filing Requirement of Act 74, Mich. P.A. 1970

RECORDED
LAKE COUNTY, MI.
SEP 5 3 06 PM '95
REGISTER OF DEEDS
Shirley H. Peterson

LIBER 003 PAGE 0317
Register of Deeds Stamp & File Number

For corners in

Lake (County)	Located In:	Corner Code --#
1. Public Land Survey	T 19N R 11W	E-7
2. Property Controlling in Section	S T R	
3. Miscellaneous Property in Sec.	S T R	
4. Lot No. _____, Recorded Plat _____		
5. Private Claims _____		



Robert L. Wetherell, in a field survey on April 26, 1995

I hereby certify that under requirements of P.A. 74, Michigan P.A. of 1970, the corner points mentioned in lines 1 and 2 above were in conformance with regulations and rules therefore as required in the current manual of survey instructions of the United States Department of the Interior, Bureau of Land Management or by a decree of a Court of Law and/or that the corner points mentioned in lines 3, 4 and 5 above were in conformance with the rules of the Michigan Board of Land Surveyors or by a Decree of a Court of Law; established, re-established, monumented, re-monumented, recovered, found as expressed below:

NOTE: Not more than 4 corners, all in the same town and range, may be recorded on this certificate.

Description of original monument and accessories and/or subsequent restoration:
E-7 - Section corner common to Sections 16, 17, 20 & 21, T19N, R11W, Lake Co., Mi.

- | | | |
|--|--|--|
| 1838 - S. Sibley, G.L.O.
#1 - 14" beech N64°W 49 Links
#2 - 10" beech S56°E 15 Links | 1977 - J. Wilcox, L.S. 14102
L.C.R.C. - Liber 02, Page 329
#3 - 28" Maple S45°E 37.52'
#4 - 4" Cherry S70°W 54.48'
#5 - Fence Post S45°E 47.37'
#6 - Fence line intersection N45°E 46.10' | 1981 - C. Roser, L.S. 12028
Found 3/8" Pipe and Narrow Gage Railroad Rail
#8 - 30" Maple S65°E 77.65'
#3 - 24" Maple S50°E 37.65'
#7 - D.N.R. Post N45°E 47' |
|--|--|--|

Description of corner evidence found and/or method applied in restoring or reestablishing corner:
E-7 - Section corner common to Sections 16, 17, 20 & 21, T19N, R11W, Lake Co., Mi.

I found a 3/8" x 18" pipe with cap (unreadable, Last 3 digits were 990). Directly below this pipe I found a narrow gage railroad rail. This corner is 7.5 feet East of the centerline of a North and South gravel road and 8 feet South of the centerline of a gravel road to the East. Condition of the accessories are: #1 - Gone, #2 - Gone #3 - Found in good condition, #4 Gone, #5 - Down, #6 - Fence post down, #7 - Found in good condition, #8 - Found in good condition.

All of the found accessories checked well with recorded distances to the corner.

ATIFIED BY THE LAKE CO. PEER REVIEW GROUP
IN ACCORDANCE WITH P.A. 345
CHAIRMAN *R. L. W.*
DATE 8-29-95

Description of monument for corner and accessories established to perpetuate locating the position of the corner:
E-7 - Section corner common to Sections 16, 17, 20 & 21, T19N, R11W, Lake Co., Mi.

I replaced the 3/8" pipe with a 3/4" - 24" re-bar with Lake County Brass Cap (directly over the narrow gage railroad rail) and is accepted as a careful and faithful re-establishment of the position of the original corner.

- 23" Maple S51°E 37.41' (O.B.T. #3) (60d spike in N.E. side)
- 32" Maple S65°E 77.65' (O.B.T. #8) (60d spike in N.E. side)
- 42" Maple S77°E 184.10' (60d spike in N. side)
- 4" Cherry N42°W 55.30' (Center of Tree)
- 3" Maple S70°W 47.02' (Center of Tree)

igned by *Robert L. Wetherell* Date August 29, 1995
24624
urveyor's Michigan License No. _____

