

# LAND CORNER RECORDATION CERTIFICATE

Filing Requirement of Act 74, Mich. PA 1970

For Corners In:  
Lake Located In Corner Code #  
 (County)

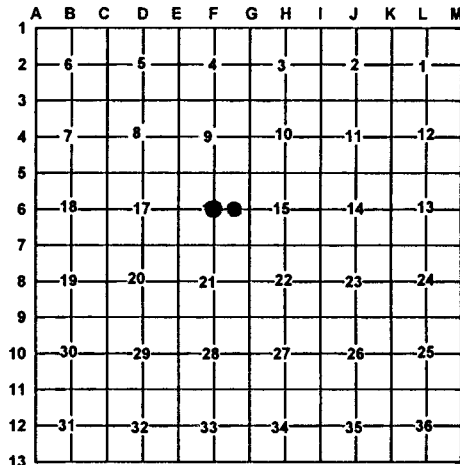
|                                      |   |     |   |     |         |
|--------------------------------------|---|-----|---|-----|---------|
| 1. Public Land Survey                | T | 19N | R | 12W | F-6     |
|                                      | T |     | R |     |         |
| 2. Property Controlling in Section   | S | 16  | T | 19N | R 12W 9 |
|                                      | S |     | T |     | R       |
| 3. Miscellaneous Property in Section | S |     | T |     | R       |
|                                      | S |     | T |     | R       |

Register of Deeds Stamp & File Number

4. Lot No: \_\_\_\_\_ Recorded Plat: \_\_\_\_\_  
 5. Private Claims: \_\_\_\_\_

I, Craig W. McVean, in a field survey on August 8, 2001 do hereby state that under requirements of PA 74, Michigan PA of 1970, the corner points mentioned in lines 1 and 2 above were in conformance with regulations and rules therefore as required in the current manual of survey instructions of the United States Department of the Interior, Bureau of Land Management or by a decree of a Court of Law and/or that the corner points mentioned in lines 3, 4 and 5 above were in conformance with the rules of the Michigan Board of Land Surveyors or by a Decree of a Court of Law; established, re-established, monumented, recovered, found as expressed below:

**NOTE: Not more than 2 corners, all in the same town and range, may be recorded on this certificate.**



**A. Description of original monument and accessories and/or subsequent restoration:**

F-6 -LCRC- L.3, P.103- R.L. Wetherell-1990  
 Set 1/2" rebar w/ cap #24624 at intersection of 1/4 lines  
 8" W. Pine N78°W 46.75'  
 14" Cedar S24°E 43.18'  
 8" Maple S53°E 17.88'  
 4" W. Pine N33°E 29.79'

9- Unrecorded survey- File #609-90 R.L. Wetherell- 1990  
 Set 1/2" iron marked L. S. 24624



**B. Description of corner evidence found and/or method applies in restoring or re-establishing corner:**

F-6 -C 1/4, Section 16- Fd. 1/2" X 18" rebar with cap #24624 per LCRC. Iron fits calculated 1/4 line intersection closely and is accepted as the best available evidence of the position of the corner.

9- CE 1/16 corner section 16.  
 Found 1/2" capped iron #24624 per unrecorded survey. Corner in swamp. South edge of swamp is 75'± south. Capped iron rod fits calculated position closely and is accepted as the best available evidence of the position of the corner

**C. Description of monument for corner and accessories established to perpetuate locating the position of the corner:**

F-6 -Replaced 1/2" X 18" capped iron rod with 2" aluminum cap on 5/8" X 34" rebar.  
 SW 1' to set blue carsonite post with location tag  
 Reset found 4" X 4" wood post 0.8' North  
 S52°E 17.87' to fd. nail in NE side of 12" R. Maple (RW)  
 S25°E 43.16' to fd. nail in SW side of 16" Cedar (RW)  
 N36°E 49.79' to fd. nail in NW side of 8" W. Pine (RW)  
 N81°W 46.69' to set N&T in South side 16" W. Pine (RW)

9- Replaced 1/2" capped iron rod with 2" aluminum cap on 5/8" X 4" rebar.  
 SE 1' to set blue carsonite post with location tag  
 Reset found 4" X 4" wood post 0.8' NW  
 N10°E 30.38' to N&T in West side of 6" Hemlock  
 N48°E 18.14' to N&T in NW side of 3" W. Pine  
 S22°W 23.18' to N&T in SE side of 3" W. Pine  
 N71°W 31.05' to N&T in NE side of 16" W. Pine

Signed by: Craig W. McVean  
 Surveyor's Michigan License No.: 39088

Date: 11/26/2001