

LAND CORNER RECORDATION CERTIFICATE

Filing Requirement of Act 74, Mich. PA 1970

| | | |
|---|--|---------------------|
| For Corners In: Lake _____ (County) _____ | Located In _____ | Corner Code # _____ |
| 1. Public Land Survey | T _____ R _____ T _____ R _____ | _____ |
| 2. Property Controlling in Section | S 16 T 19N R 12W 5 S 15 T 19N R 12W 3 | _____ |
| 3. Miscellaneous Property in Section | S _____ T _____ R _____ S _____ T _____ R _____ | _____ |

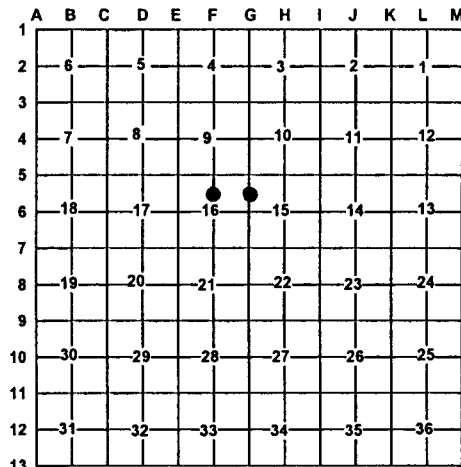
Register of Deeds Stamp & File Number

4. Lot No: _____ Recorded Plat: _____

5. Private Claims: _____

I, Craig W. McVean, in a field survey on July 17, 2001 do hereby state that under requirements of PA 74, Michigan PA of 1970, the corner points mentioned in lines 1 and 2 above were in conformance with regulations and rules therefore as required in the current manual of survey instructions of the United States Department of the Interior, Bureau of Land Management or by a decree of a Court of Law and/or that the corner points mentioned in lines 3, 4 and 5 above were in conformance with the rules of the Michigan Board of Land Surveyors or by a Decree of a Court of Law; established, re-established, monumented, recovered, found as expressed below:

NOTE: Not more than 2 corners, all in the same town and range, may be recorded on this certificate.



A. Description of original monument and accessories and/or subsequent restoration:

5- None 3- None



B. Description of corner evidence found and/or method applies in restoring or re-establishing corner:

| | |
|--|--|
| <p><u>5</u>- CN 1/16 corner, section 16. Set 2" Aluminum cap on 5/8" X 34" Rebar per standard BLM procedure.</p> | <p><u>3</u>- N 1/16 corner common to section 15 and 16. Set 2" Aluminum cap on 5/8" X 48" rebar per standard BLM procedure in swamp. South 34'± to North edge of stream Westerly</p> |
|--|--|

C. Description of monument for corner and accessories established to perpetuate locating the position of the corner:

| | |
|--|---|
| <p><u>5</u>-2" Aluminum cap on 5/8" X 34" rebar NW 1' to set blue carsonite post with location tag S36°W 21.93' to nail and tag in NW side of 17" W. Pine N82°W 33.35' to nail and tag in NW side of 9" W. Pine N02°E 25.21' to nail and tag in E side of Tw. 10" R. Maple N89°E 19.16' to NW corner Blk. Fdtn. HSE.</p> | <p><u>3</u>- 2" Aluminum cap on 5/8" X 4' rebar S41°W 9.24' to nail and tag in SE side of 12" W. Pine N36°W 26.71' to nail and tag in SW side of 20" W. Pine N83°E 27.33' to nail and tag in South side of 7" Cedar SW 1' to set blue carsonite post with location tag S28°E 21.82' to N & T in NW side 16" W. Pine</p> |
|--|---|

Signed by: Craig W. McVean
Surveyor's Michigan License No.: 39088

Date: 11/26/2001