

MICHIGAN  
DEPARTMENT OF CONSERVATION  
FORESTRY DIVISION

LAND CORNER RECORD

T. 19 N.R. 12 & 13 W

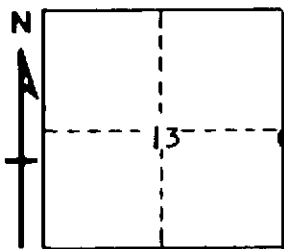
LAKE COUNTY

DESCRIPTION OF CORNER 1/4 corner common to Sections 18 & 13

CORNER MONUMENT Found 3/4" Iron rod. Replaced with Std. Dept. Monument.

DATE MONUMENT PLACED AND WITNESSED November 1968

WITNESSES TO CORNER.....



CIRCLE CORNER REGISTERED

20" Oak	S 45 W	37.6'
10" Oak	N 25 W	26.5'
AND		
12" Oak	S 20 E	50.2'

DESCRIPTION IN DETAIL AS TO HOW CORNER WAS LOCATED AND IDENTIFIED OR RESTORED.

This corner was recovered by George Blass In 1941.

SURVEYOR'S SEAL

SIGNED Carl F. Roerz DATE 1/19/69  
REGISTERED LAND SURVEYOR #12028