

LAND CORNER RECORDATION CERTIFICATE
Filing Requirement of Act 74, Mich. P.A. 1970

For corners in
LAKE

(County) _____	Located In:	Corner Code: //
1. Public Land Survey	T 19N R 13W	I-3, I-4
	T _____ R _____	J-4
	T _____ R _____	
	T _____ R _____	
2. Property Controlling in Section	S 11 T _____ R _____	5
	S _____ T _____ R _____	
3. Miscellaneous Property in Sec.	S _____ T _____ R _____	
	S _____ T _____ R _____	
4. Lot No. _____, Recorded Plat _____		
5. Private Claims _____		

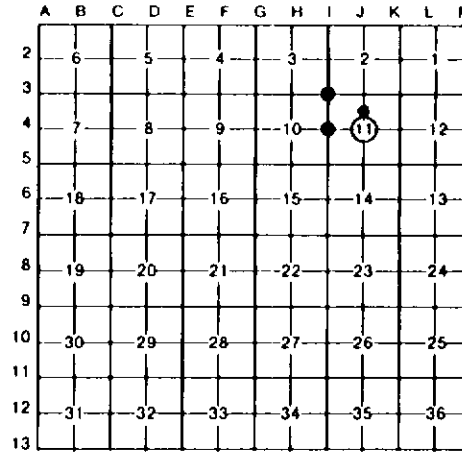
Register of Deeds Stamp & File Number

I, CARL T. KIISKILA, in a field survey on JUNE 28, 19 94, do hereby certify that under requirements of P.A. 74, Michigan P.A. of 1970, the corner points mentioned in lines 1 and 2 above were in conformance with regulations and rules therefore as required in the current manual of survey instructions of the United States Department of the Interior, Bureau of Land Management or by a decree of a Court of Law and/or that the corner points mentioned in lines 3, 4 and 5 above were in conformance with the rules of the Michigan Board of Land Surveyors or by a Decree of a Court of Law, established, re-established, monumented, re-monumented, recovered, found as expressed below:

NOTE: Not more than 4 corners, all in the same town and range, may be recorded on this certificate.

A. Description of original monument and accessories and/or subsequent restoration:

I-3	I-4	J-4	5
FD USFS MON (6" ROUND X 5' LONG CONC MON W/BRASS CAP) AS SET BY R. GRIFFEN IN 1962 IN PLACE OF FD 5/8" BOAT SPIKE (SPIKE SET BY G. BLASS IN 1958 BY D.P.). CTR M-37 IS EAST 26'.	FD USFS MON FOR W 1/4 S-11 AS SET BY R. GRIFFEN MIDWAY & ON LINE BETWEEN NW & SW CORS OF S-11 IN 1973. (MON IS STAMPED WRONG). CTR M-37 IS 1 1/2' WEST.	ACCEPTED 1/2" PIPE FOR CENTER OF SEC. 11. CORNER FITS RLS 6. BLASS SUBDIVISION OF S-11 DATA.	FOUND P.S. C. COLE, #17615, REROD FOR THE SE CORNER OF NE 1/4-NW 1/4 OF SEC 11. COR ALSO FITS RLS 6. BLASS SUB'D OF SEC 11 DATA. CTR OF OLD M-63 IS 308' ± 2' SOUTH



B. Description of corner evidence found and/or method applied in restoring or reestablishing corner:

I-3	I-4	J-4	5
FD USFS MON (6" ROUND X 5' LONG CONC MON W/BRASS CAP) AS SET BY R. GRIFFEN IN 1962 IN PLACE OF FD 5/8" BOAT SPIKE (SPIKE SET BY G. BLASS IN 1958 BY D.P.). CTR M-37 IS EAST 26'.	FD USFS MON FOR W 1/4 S-11 AS SET BY R. GRIFFEN MIDWAY & ON LINE BETWEEN NW & SW CORS OF S-11 IN 1973. (MON IS STAMPED WRONG). CTR M-37 IS 1 1/2' WEST.	ACCEPTED 1/2" PIPE FOR CENTER OF SEC. 11. CORNER FITS RLS 6. BLASS SUBDIVISION OF S-11 DATA.	FOUND P.S. C. COLE, #17615, REROD FOR THE SE CORNER OF NE 1/4-NW 1/4 OF SEC 11. COR ALSO FITS RLS 6. BLASS SUB'D OF SEC 11 DATA. CTR OF OLD M-63 IS 308' ± 2' SOUTH

C. Description of monument for corner and accessories established to perpetuate locating the position of the corner:

I-3	I-4	J-4	5
FD USFS CONC BRASS CAP MON. #NE COR OF EAST END OF NORTH HEADWALL S10°W± 314.7'	FD USFS BRASS CAP CONC MON IN MON BOX. 8" CEDAR N65°W 78.83'	FD 1/2" PIPE & STEEL SIGN POST IN CONC. ADDED LOC TAG TO POST. 6" TW B CHERRY N50°W 25.0'	FD 1/2" REROD W/RLS CAP. SET CED POST W/LOC TAG. 8" CEDAR N40°W 13.0'
9" W PINE S35°W 112.01'	#30" W PINE S50°E 94.50'	SW COR B'X 12' STORAGE BUILDING S50°E 33.4'	8" CEDAR N50°E 7.4'
9" CEDAR S85°W 83.92'	8" CEDAR S50°W 94.20'	3" B. CHERRY S15°W 24.6'	7" CEDAR S45°W 9.0'
#15" CEDAR N75°W 75.50'	FD 4" X 4" POST W/LOC TAG. WEST 74.85'	#19" J PINE S75°W 68.3'	11" CEDAR S85°W 5.5'
FD CED POST WEST 55'			

*R. GRIFFEN 1962 WIT. *PS R.A. GRIFFIN WIT (USFS) *RLS G. BLASS WIT.

Signed by Carl T. Kiiskila Date 5-16-97

Surveyor's Michigan License No. 33981