

LAND CORNER RECORDATION CERTIFICATE
Filing Requirement of Act 74, Mich. P.A. 1970

For corners in
LAKE
 (County)

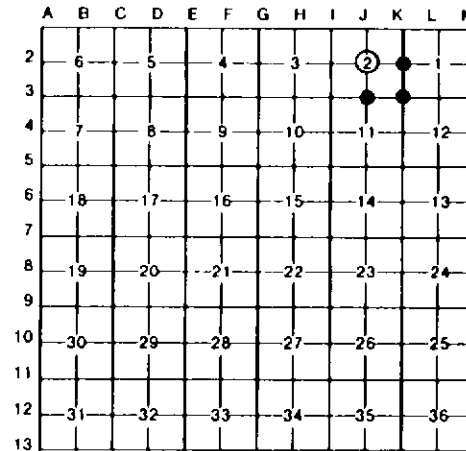
Located In:	Corner Code //
T 19N R 13W	J-2, J-3,
T R	K-2, K-3
T R	
T R	
S T R	
S T R	
S T R	
S T R	

- 1. Public Land Survey
- 2. Property Controlling in Section
- 3. Miscellaneous Property in Sec.

Register of Deeds Stamp & File Number

- 4. Lot No. _____, Recorded Plat _____
- 5. Private Claims _____

I, CARL T. KIISKILA, in a field survey on JUNE 27, 19 94, do hereby certify that under requirements of P.A. 74, Michigan P.A. of 1970, the corner points mentioned in lines 1 and 2 above were in conformance with regulations and rules therefore as required in the current manual of survey instructions of the United States Department of the Interior, Bureau of Land Management or by a decree of a Court of Law and/or that the corner points mentioned in lines 3, 4 and 5 above were in conformance with the rules of the Michigan Board of Land Surveyors or by a Decree of a Court of Law, established, re-established, monumented, re-monumented, recovered, found as expressed below:



NOTE: Not more than 4 corners, all in the same town and range, may be recorded on this certificate.

A. Description of original monument and accessories and/or subsequent restoration:



B. Description of corner evidence found and/or method applied in restoring or reestablishing corner:

J-2 ACCEPTED C. COLE REROD FOR CTR OF SEC 2. COLE SET IRON IN 1973 SURVEY FOR S 1/2 OF NW 1/4 SEC 2. CERT OF SURVEY RECORDED LI 1, PG 303. CENTER SAND RD (NW-SE) IS 111' NORTH. NORTH EDGE OF SWAMP IS 55'± SOUTH. CTR OF OLD RR GRADE (NW-SE) IS 29' NORTH.	J-3 REESTABLISHED N 1/4 COR SEC 11 MIDWAY & ON LINE BETWEEN FD SEC CORS 1/2 MILE TO E & W. THIS POSITION FITS PREVIOUS SURVEYS IN SEC 2 & 11 BY G. BLASS, RLS #5489. NE'LY EDGE CLANCY CRK IS 113'± 5' SOUTH & 265'± 15' WEST. 1'± WIDE CREEK C-SSW IS 89'± 4' EAST. 2'± WIDE CREEK C-SSW IS 404'± 20' EAST.	K-2 FD 1/2" PIPE FOR E 1/4 SEC 2. FITS REMAINS OF THREE 1958 G. BLASS WITS. COR ALSO FITS 1973 CERT OF SURVEY LIBER 1, PG 303 BY C. COLE FOR S 1/2 OF NW 1/4 SEC 2. SW'LY EDGE OF SYERS LAKE IS 704'± NORTH. FD C. COLE 1/2" REROD N01°07'34" W, 646.86'.	K-3 FD 3/4" IRON ROD FOR NE COR OF SEC 11 AS USED IN PREVIOUS SURVEYS BY G. BLASS, RLS #5489. G. BLASS FOUND THIS CORNER IN 1941.
---	--	---	---

C. Description of monument for corner and accessories established to perpetuate locating the position of the corner:

J-2 FD 1/2" REROD W/RLS CAP. ADDED CED POST W/LOC TAG.	J-3 SET DNR MON & CED POST. 9" CEDAR N05°W 23.3' 3" ASH N35°E 18.6' 9" CEDAR N55°E 44.8' 8" TW MAPLE S35°E 25.0' 10" CEDAR WEST 2.9'	K-2 FD 1/2" PIPE. ADDED DNR MON. SET CED POST. 2" TW W OAK N50°W 29.4' FD FS LOC TAG ON 24" OLD W. PINE STP NORTH 33.9' 3" W PINE S70°E 38.6' 2" CLP MAPLE S10°E 18.6' 2" CLP MAPLE S80°W 28.0'	K-3 FD 3/4" X 15" OLD IR ROD. ADDED DNR MON & SET CED POST. #16" TAMARACK N47°W 24.1' #11" TAMARACK N19°E 6.8' #15" TAMARACK EAST 18.6' 4" CEDAR S40°E 3.5' 5" CEDAR S76°W 14.2' #RLS G. BLASS 1941 WIT.
--	---	--	--

Signed by Carl T. Kiiskila Date 5-16-97
 Surveyor's Michigan License No. 33981