

**LAND CORNER RECORDATION CERTIFICATE**  
**Filing Requirement of Act 74, Mich. P.A. 1970**

For corners in  
LAKE  
 (County)

Located In: \_\_\_\_\_ Corner Code 77

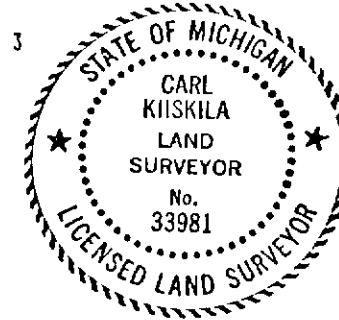
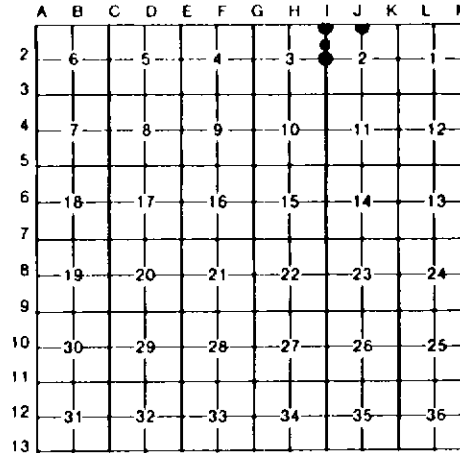
- |                                       |       |       |          |
|---------------------------------------|-------|-------|----------|
| 1. Public Land Survey                 | T 19N | R 13W | I-1, I-2 |
|                                       | T     | R     | J-1      |
|                                       | T     | R     |          |
|                                       | T     | R     |          |
| 2. Property Controlling in Section    | S 2   | T     | R 3      |
|                                       | S     | T     | R        |
| 3. Miscellaneous Property in Sec.     | S     | T     | R        |
|                                       | S     | T     | R        |
| 4. Lot No. _____, Recorded Plat _____ |       |       |          |
| 5. Private Claims _____               |       |       |          |

Register of Deeds Stamp & File Number

I, CARL T. KIISKILA, in a field survey on AUGUST 8, 1995, do hereby certify that under requirements of P.A. 74, Michigan P.A. of 1970, the corner points mentioned in lines 1 and 2 above were in conformance with regulations and rules therefore as required in the current manual of survey instructions of the United States Department of the Interior, Bureau of Land Management or by a decree of a Court of Law and/or that the corner points mentioned in lines 3, 4 and 5 above were in conformance with the rules of the Michigan Board of Land Surveyors or by a Decree of a Court of Law; established, re-established, monumented, re-monumented, recovered, found as expressed below.

**NOTE: Not more than 4 corners, all in the same town and range, may be recorded on this certificate.**

A. Description of original monument and accessories and/or subsequent restoration:



B. Description of corner evidence found and/or method applied in restoring or reestablishing corner:

- |   |   |  |  |
|---|---|--|--|
| I-1<br>FD USFS MON FOR THE COR COMMON TO SEC'S 2 & 3, T19N-R13W. CTR OF N-S GRAVEL RD IS 10' WEST. COR IS IN LINE W/CTR OF SAND ROAD TO WEST & TWO-TRACK TO EAST. | I-2<br>FD USFS MON FOR W 1/4 CORNER SEC 2. CTR OF 17' WIDE N-S GRAVEL ROAD IS 18' EAST. | J-1<br>FD 1/2" PIPE FOR N 1/4 CORNER SEC 2. CERT OF SURVEY BY C. COLE (1973, LI 1, PG 303) IN S 1/2 OF NW 1/4 SEC 2 FITS THIS 1/4 COR POSITION. CTR OF E-W SAND TRAIL IS 10'S. | 3<br>FD USFS MON FOR SW CORNER OF FRL NW1/4-FRL NW 1/4 OF SEC 2. CTR OF N-S 19'± WIDE GRAVEL ROAD IS 19' EAST. |
|---|---|--|--|

C. Description of monument for corner and accessories established to perpetuate locating the position of the corner:

- |  |  |   |   |
|--|--|---|---|
| I-1<br>FD USFS BRASS CAP CONC MON.<br>2" W PINE S50°E 38.47'<br>#23" B. OAK S20°E 41.40'<br>3" W PINE S40°W 75.90'<br>FD USFS MON SW COR S-35<br>T20N-R13W N89°08'W 12.59'<br>#PS C. COLE WIT. | I-2<br>FD USFS CONC BRASS CAP MON & 4" X 4" POST.<br>11" HEMLOCK N45°E 72.67'<br>12" W PINE N75°E 76.44'<br>#10" MAPLE S60°E 54.72'<br>14" MAPLE S40°W 11.70'<br>FD IR W/COLE PS CAP EAST 33'<br>#PS C. COLE & R.A. GRIFFIN WIT. | J-1<br>REPL'D FD 1/2" X 16" GALV PIPE W/DNR MON. SET CED POST.<br>5" W PINE N50°W 64.6'<br>6" W PINE N35°E 46.0'<br>7" R PINE S10°W 27.5'<br>5" R PINE S30°W 29.6'<br>DNR MON S 1/4 S-35<br>T20N-R13W N89°08'W 10.93' | 3<br>FD USFS CONC BRASS CAP MON.<br>CTR 6" X 6" X 3.5' TALL METAL TELPH. RISER N50°E 55.3'<br>6" TW SUG MAPLE S70°E 47.49'<br>7" ASH S45°W 6.63'<br>7" SUG MAPLE N85°W 30.26' |
|--|--|---|---|

Signed by Carl T. Kiiskila Date 5-16-97  
 Surveyor's Michigan License No. 33981