

JAN 12 1996

COMMISSION

LAKE COUNTY REMONUMENTATION  
LAND CORNER RECORDATION CERTIFICATE  
Filing Requirement of Act 74, Mich. P.A. 1970

LIBER 003 PAGE 0297

For corners in

Lake (County)	Located in:		Corner Code #
	19N	13W	
1. Public Land Survey	T	R	G-11
	T	R	
	T	R	
	T	R	
2. Property Controlling in Section	S	T	R
	S	T	R
3. Miscellaneous Property in Sec.	S	T	R
	S	T	R

REGISTER OF DEEDS

RECORDED  
LAKE COUNTY, MI.

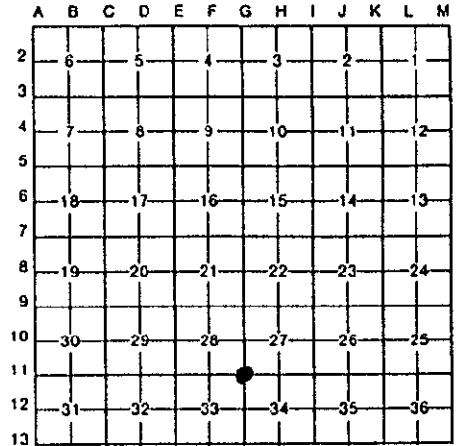
JUN 8 3 51 PM '95

Register of Deeds Stamp & File Number

- 4. Lot No. \_\_\_\_\_, Recorded Plat \_\_\_\_\_
- 5. Private Claims \_\_\_\_\_

Robert L. Wetherell in a field survey on January 4, 1995

I hereby certify that under requirements of P.A. 74, Michigan P.A. of 1970, the corner points mentioned in lines 1 and 2 above were in conformance with regulations and rules therefore as required in the current manual of survey instructions of the United States Department of the Interior, Bureau of Land Management or by a decree of a Court of Law and/or that the corner points mentioned in lines 3, 4 and 5 above were in conformance with the rules of the Michigan Board of Land Surveyors or by a Decree of a Court of Law; established, re-established, monumented, re-monumented, recovered, found as expressed below:



NOTE: Not more than 4 corners, all in the same town and range, may be recorded on this certificate.

- A. Description of original monument and accessories and/or subsequent restoration:
  - G-11 - Section corner common to Sections 27, 28, 33 & 34, T19N, R13W, Peacock Twp., Lake Co., Mi.
    - 1838 - S. Sibley, G.L.O. #1-7" Pine S26°W 37 Links #2 - 14" Pine N39°E 32 Links
    - 1878 - L.S.C. #3 - 24" W. Pine N50-1/2°E 135 Links #4 - 10" Pine N50°W 108 Links
    - 1954 - George Blass, LS 5489 Found Iron Pipe #5 - 10" W. Oak N23°E 98.90' #6 - 16" B. Oak S32°E 62.90' #7 - 6" B. Oak N60°W 42.40'
    - 1972 - Jerome Switalski, LS 13045 Developed the plat of "E.G. Mill Sub No. 1". This corner being the S.W. cor. of said Plat.
    - 1959 - Maurice Buck, Surveyor Developed the plat of "Sunrise Point". Set a 4" x 36" Concrete Monument. This corner being the N.W. corner of said Plat.

- B. Description of corner evidence found and/or method applied in restoring or reestablishing corner:
  - G-11 - Section corner common to Sections 27, 28, 33 & 34, T19N, R13W, Peacock Twp., Lake Co., Mi.

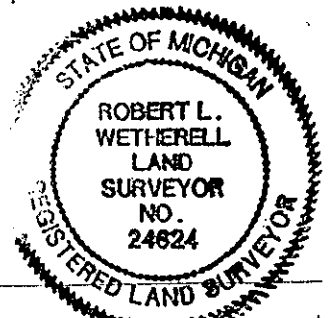
I found a 4" x 36" concrete monument in the center of a North-South gravel road and 12 feet North of gravel road to the East. I also found a concrete monument 33 feet East and a concrete monument 33 feet South. Condition of the accessories are as follows: #1 Gone, #2 Gone, #3 Gone, #4 Gone, #5 Found in good condition, #6 Gone, #7 Found in good condition.

VALIDATED BY THE LAKE CO. PEER REVIEW GROUP  
IN ACCORDANCE WITH P.A. 345  
CHAIRMAN *R.L.W.*  
DATE 5-22-95

- C. Description of monument for corner and accessories established to perpetuate locating the position of the corner:
  - G-11 - Section corner common to Sections 27, 28, 33 & 34, T19N, R13W, Peacock Twp., Lake Co., Mi.

I accepted the 4" x 36" concrete monument as a substantial monument for the corner and is accepted as a careful and faithful re-establishment of the position of the original corner.

- N.W. corner of Concrete Block house S46°E 81.01'
- 18" W. Oak N29°E 99.59' (60d spike in W. side) O.B.T. #5
- 16" B. Oak N57°W 42.93' (60d spike in N.E. side) O.B.T. #7
- 9" B. Oak S55°W 55.31' (60d spike in N.W. side)



Signed by *Robert L. Wetherell* Date May 29, 1995  
LS 24624

Surveyor's Michigan License No. \_\_\_\_\_