

LAND CORNER RECORDATION CERTIFICATE
Filing Requirement of Act 74, Mich. P.A. 1970

For corners in

Table with columns: Lake (County), Located In: (19N, 13W), Corner Code # (H-5). Rows include Public Land Survey, Property Controlling in Section, and Miscellaneous Property in Sec.

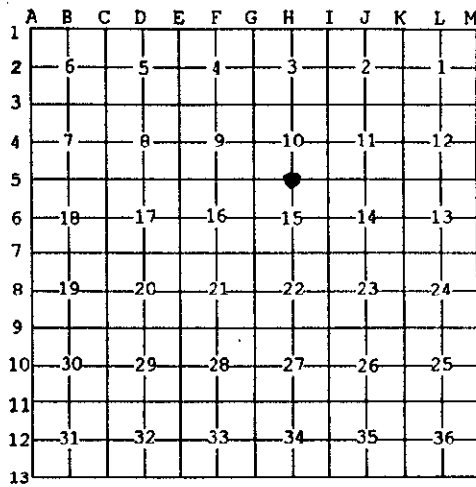
REGISTER OF DEEDS
RECORDED LAKE COUNTY, MI.
OCT 29 4 40 PM '98

Register of Deeds Stamp & File Number

4. Lot No. Recorded Plat
5. Private Claims

Robert L. Wetherell Aug. 4, 98

I, in a field survey on 19 do hereby state that under requirements of P.A. 74, Michigan P.A. of 1970, the corner points mentioned in lines 1 and 2 above were in conformance with regulations and rules therefore as required in the current manual of survey instructions of the United States Department of the Interior, Bureau of Land Management or by a decree of a Court of Law and/or that the corner points mentioned in lines 3, 4 and 5 above were in conformance with the rules of the Michigan Board of Land Surveyors or by a Decree of a Court of Law, established, re-established, monumented, recovered, found as expressed below:



NOTE: Not more than 2 corners, all in the same town and range, may be recorded on this certificate.

A. Description of original monument and accessories and/or subsequent restoration:

- H-5 - 1/4 Corner common to Sections 10 & 15, T19N, R13W, Lake Co., Mi.
1838 - S. Sibley, G.L.O.
1971 - G. Blass, LS 5489
1974 - R. Griffin, LS 13584
#1 - 12" Pine N69°W 34 Links
L.C.R.C. - Liber 02, Pg. 5
L.C.R.C. - Liber 02, Pg. 216
#2 - 8" Pine S80°E 34 Links
Set 1" x 24" Iron by single proportionate method.
Set 5" Square Concrete Monument
#3 - 8" Cherry N25°W 37.74'
#4 - 8" J. Pine S21°W 41.88'
#5 0 8" J. Pine S52°E 62.95'
#6 - 4" Post - North 33'
#7 - 9" B. Oak S17°E 102.60'
#8 - 5" W. Oak S34°W 100.52'
Northwest Cor. Sec. 15 - 2652.60'
Northeast Cor. Sec. 15 - 2652.60'

B. Description of corner evidence found and/or method applied in restoring or reestablishing corner:

RATIFIED BY THE LAKE CO. PEER REVIEW GROUP IN ACCORDANCE WITH P.A. 345 CHAIRMAN E.R.W. DATE 10-27-98

H-5 - 1/4 Corner common to Sections 10 & 15, T19N, R13W, Lake Co., Mi.

I found Griffin's 5" Square Concrete Monument 1' below surface of blacktop road (raised to surface with railroad spike).

Condition of the accessories are as follows: #1 Gone, #2 Gone, #3 Found Stump, # 4 Found in good condition, #5 Found in good condition, #6 Found in good condition, #7 Found in good condition, #8 Found in good condition.

C. Description of monument for corner and accessories established to perpetuate locating the position of the corner:

H-5 - 1/4 Corner common to Sections 10 & 15, T19N, R13W, Lake Co., Mi.

I accepted the 5" Square Concrete Monument as a substantial marker for the corner, and is accepted as a careful and faithful re-establishment of the position of the original corner.

- 4" B. Oak N29°W 45.12' (60d spike in E. side)
11" Maple N26°E 40.74' (60d spike in W. side)
11" J. Pine S50°E 62.94' (60d spike in N.E. side) #5
7" W. Oak S6°E 48.11' (60d spike in W. side)
10" W. Oak S36°W 100.57' (dock spike in W. side) #8

Signed by Robert L. Wetherell
Surveyor's Michigan License No. 24624

Date 10-29-98

