

CONFIDENTIAL

LAND CORNER RECORDATION CERTIFICATE
Filing Requirement of Act 74, Mich. P.A. 1970

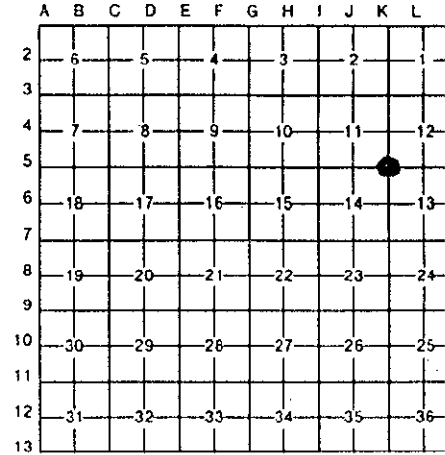
LIBER003 PAGE 0394

For corners in

| Lake (County) | Located In: | | Corner Code # |
|------------------------------------|-------------|-----|---------------|
| | 19N | 13W | |
| 1. Public Land Survey | T | R | K-5 |
| | T | R | |
| | T | R | |
| | T | R | |
| 2. Property Controlling in Section | S | T | R |
| | S | T | R |
| 3. Miscellaneous Property in Sec. | S | T | R |
| | S | T | R |

RECORDED
LAKE COUNTY, MI.
NOV 14 11 26 AM '96
REGISTER OF DEEDS
Register of Deeds Stamp & File Number

4. Lot No. _____, Recorded Plat _____
5. Private Claims _____



I, Robert L. Wetherell, in a field survey on March 1, 1996, do hereby certify that under requirements of P.A. 74, Michigan P.A. of 1970, the corner points mentioned in lines 1 and 2 above were in conformance with regulations and rules therefore as required in the current manual of survey instructions of the United States Department of the Interior, Bureau of Land Management or by a decree of a Court of Law and/or that the corner points mentioned in lines 3, 4 and 5 above were in conformance with the rules of the Michigan Board of Land Surveyors or by a Decree of a Court of Law; established, re-established, monumented, re-monumented, recovered, found as expressed below:

NOTE: Not more than 4 corners, all in the same town and range, may be recorded on this certificate.

A. Description of original monument and accessories and/or subsequent restoration:
K-5 - Section corner common to Sections 11, 12, 13 and 14, T19N, R13W, Peacock Twp., Lake Co., Mi.

1838 - S. Sibley, G.L.O.
24" Pine for corner

1941 - George Blass, LS 5489
Iron pin and wood stake
#1 - 5" Poplar N51°E 27.50'
#2 - 5" Poplar N17°E 29.65'
#3 - 5" Poplar S68°W 20.20'

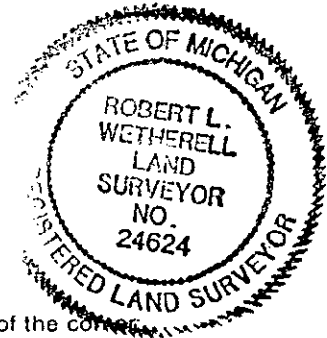
1958 - George Blass, LS 5489
5/8" Iron Rod
#4 - 8" B. Oak N45°W 81.35'
#5 - 6" B. Oak S24°W 77.66'
#6 - Power Pole S67°E 113.67'
#3 - 6" Poplar S68°W 20.20'

(See over for continuation of "A")

B. Description of corner evidence found and/or method applied in restoring or reestablishing corner:
K-5 - Section corner common to Sections 11, 12, 13 and 14, T19N, R13W, Peacock Twp., Lake Co., Mi.

I found the D.N.R. capped monument and accessories No. 4, No. 5 Gone, No. 6 and No. 7 in good condition. ALL other accessories were gone.

RATIFIED BY THE LAKE CO. PEER REVIEW GROUP
IN ACCORDANCE WITH P.A. 345
CHAIRMAN R.L.W.
DATE 11-12-1996



C. Description of monument for corner and accessories established to perpetuate locating the position of the corner:

K-5 - Section corner common to Sections 11, 12, 13 and 14, T19N, R13W, Peacock Twp., Lake Co., Mi.

I accepted the D.N.R. monument as a substantial monument for the corner, and is accepted as a careful and faithful re-establishment of the position of the original corner.

- 12" Maple N66°E 73.16' (60d spike in N.W. side) #7
- Power Pole S69°E 113.67' (P.K. nail in N. side) #6
- 8" B. Oak S31°W 58.93' (60d spike in E. side)
- 16" B. Oak N47°W 81.76' (60d spike in N. side) #4

Signed by Robert L. Wetherell Date 11-13-1996

Surveyor's Michigan License No. 24624

CONTINUATION OF "A" - DESCRIPTION OF ORIGINAL MONUMENT AND ACCESSORIES AND/OR SUBSEQUENT RESTORATION:

1968 - Carl Roser, LS 12028

Found 5/8" Rod - Replaced with

D.N.R. Monument

#4 - 9" Oak N45°W 81.1'

#7 - 6" Maple N65°E 72.7'

#5 - 7" Oak S25°W 77.5'

1970 - George Blass, LS 5489

Developed the plat of "Wilderness Acres"

This corner is the S.W. corner of plat.