

LAND CORNER RECORDATION CERTIFICATE
Filing Requirement of Act 74, Mich. P.A. 1970

For corners in
LAKE

(County)	Located In:	Corner Code #/
1. Public Land Survey	T 20N R 13W	K-12, L-11
	T R	L-12
	T R	
	T R	
2. Property Controlling in Section	S 36 T R	9
	S T R	
3. Miscellaneous Property in Sec.	S T R	
	S T R	
4. Lot No. _____, Recorded Plat _____		
5. Private Claims _____		

Register of Deeds Stamp & File Number

I, CARL T. KIISKILA, in a field survey on JUNE 22, 19 94, do hereby certify that under requirements of P.A. 74, Michigan P.A. of 1970, the corner points mentioned in lines 1 and 2 above were in conformance with regulations and rules therefore as required in the current manual of survey instructions of the United States Department of the Interior, Bureau of Land Management or by a decree of a Court of Law and/or that the corner points mentioned in lines 3, 4 and 5 above were in conformance with the rules of the Michigan Board of Land Surveyors or by a Decree of a Court of Law; established, re-established, monumented, re-monumented, recovered, found as expressed below:

NOTE: Not more than 4 corners, all in the same town and range, may be recorded on this certificate.

A. Description of original monument and accessories and/or subsequent restoration:
 K-12 L-11 L-12

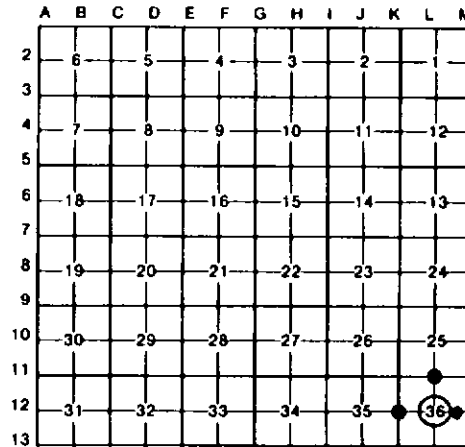
(NO EVIDENCE OF G.L.O. CORNER, B.T.'S, LINE TREES & TOPOGRAPHY, AS CALLED OUT IN THE G.L.O. LINE NOTES; UNLESS NOTED IN ITEM "B" BELOW.)

B. Description of corner evidence found and/or method applied in restoring or reestablishing corner:

K-12	L-11	L-12	9
REESTAB'D THE W 1/4 COR S-36 MIDWAY & ON LINE BETW FD NW COR S-36 & CALC SW COR SEC 36 (COR FALLS IN LAKE). THIS POSITION FITS 1956 G.BLASS SURVEY DATA FOR S-36 & 1990 C.COLE CERT OF SURVEY (LI 2, PG 134) IN S-36. CTR OF N-S WINDING TRAIL IS 127' WEST. CTR OF E-W DNR FOOTPATH IS 202' SOUTH.	FD FENCE POST IRON FOR N 1/4 COR S-36 AS SET BY G.BLASS (1956) MIDWAY & ON LINE BETWEEN SEC CORNERS 1/2 MILE EAST & WEST. CORNER FITS STUMPS OF 3 G.BLASS 1956 WITS. CTR OF E-W SAND RD IS 2' SOUTH.	ACCEPTED FD 1/2" PIPE FOR CTR OF S-36. COR ESTABLISHED BY C.COLE (1976 CERT OF SURVEY LI 2, PG 134 & REVISED 7-14-77 LI 2, PG 238) PER G. BLASS 1956 SEC 36 SURVEY DATA. NE EDGE OF SYER'S LAKE IS 53'+/- SOUTH & 112'+/- WEST.	ACCEPTED 1/2" PIPE FOR NW COR OF NE 1/4 OF SE 1/4 SEC 36. COR ESTABLISHED IN 1976 BY C.COLE (CERT OF SURVEY LI 2, PG 134; REVISED 7-14-77, LI 2, PG 238). WINDING E-W DNR FOOTPATH IS 39' NORTH.

C. Description of monument for corner and accessories established to perpetuate locating the position of the corner:

K-12	L-11	L-12	9
SET DNR MON & CARSONITE POST.	FD FN POST IRON.	FD 1/2" PIPE FLUSH. ADDED CARSONITE POST.	FD 1/2" PIPE. ADDED CARSONITE POST W/LOC TAG.
3" TW W DAK N50°W 21.7'	3" CLUMP MAPLE N25°W 17.4'	3" W PINE N30°W 2.2'	2" W PINE N15°W 21.1'
9" R PINE N55°E 36.8'	4" CLUMP MAPLE N30°E 37.8'	FD OLD FS LOC TAG ON 14" MAPLE N10°E 10.7'	15" R PINE N80°E 19.1'
9" R PINE ON S EDGE	9" W PINE S25°E 64.5'	3" W PINE S40°E 8.6'	3" MAPLE S80°E 19.6'
PLANTATION S80°E 46.8'	11" W PINE S35°W 59.1'	14" R OAK S60°W 10.2'	9" OAK S70°W 4.2'
3" MAPLE S70°W 16.6'	SET CED POST W/ LOC TAG. SOUTH 33'	FD 1/2" REROD W/CAP #17615 SOUTH 43.90	



Signed by Carl T. Kiiskila Date 5-16-97
 Surveyor's Michigan License No. 33981