

LAND CORNER RECORDATION CERTIFICATE
Filing Requirement of Act 74, Mich. P.A. 1970

For corners in
LAKE

(County)	Located In:	Corner Code #:
1. Public Land Survey	T <u>20N</u> R <u>13W</u>	<u>I-11, I-12,</u>
	T _____ R _____	_____
	T _____ R _____	_____
	T _____ R _____	_____
2. Property Controlling in Section	S <u>35</u> T _____ R _____	<u>1, 8</u>
	S _____ T _____ R _____	_____
3. Miscellaneous Property in Sec.	S _____ T _____ R _____	_____
	S _____ T _____ R _____	_____
4. Lot No. _____, Recorded Plat		
5. Private Claims		

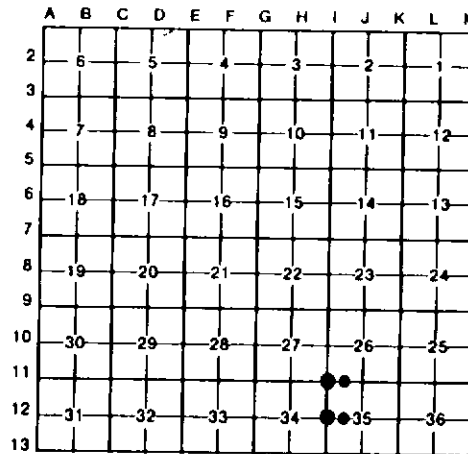
Register of Deeds Stamp & File Number

I, CARL T. KIISKILA, in a field survey on JUNE 28, 1994, do hereby certify that under requirements of P.A. 74, Michigan P.A. of 1970, the corner points mentioned in lines 1 and 2 above were in conformance with regulations and rules therefore as required in the current manual of survey instructions of the United States Department of the Interior, Bureau of Land Management or by a decree of a Court of Law and/or that the corner points mentioned in lines 3, 4 and 5 above were in conformance with the rules of the Michigan Board of Land Surveyors or by a Decree of a Court of Law; established, re-established, monumented, re-monumented, recovered, found as expressed below:

NOTE: Not more than 4 corners, all in the same town and range, may be recorded on this certificate.

A. Description of original monument and accessories and/or subsequent restoration:

(NO EVIDENCE OF G.L.O. CORNER, B.T'S, LINE TREES & TOPOGRAPHY, AS CALLED OUT IN THE G.L.O. LINE NOTES; UNLESS NOTED IN ITEM "B" BELOW.)



B. Description of corner evidence found and/or method applied in restoring or reestablishing corner:

I-11 FD CONC MON FOR NW COR S-35. COR IS IN LINE W/CTR OF SAND ROADS TO E & W & 2' WEST OF CTR N-S GRAVEL ROAD.	I-12 FD CABIN SPIKE OVER CONC MON FOR W 1/4 COR S-35. IN 1959, G.BLASS SET 3/4" PIPE FROM S. HARLAN BAKER 1913 WITS AND G.H.JOHNSON 1914 WIT. IN 1964 R.GRIFFIN UPGRADED COR & ADDED NEW WITS. COR FITS 1990 CERT OF SURVEY BY R.WETHERELL (LI 3, PG 242).	1 FD 1/2" PIPE FOR NW COR OF NE 1/4-NW 1/4 S-35. COR FITS MIDWAY & ON LINE BETWEEN FD SEC COR TO WEST & 1/4 COR EAST. CTR OF E-W SAND RD IS 2' SOUTH.	8 ACCEPTED FD 1/2" PIPE FOR THE NW COR OF NE 1/4 OF SW 1/4 OF S-35. COR FITS CLOSE TO POSITION PER STANDARD PROCEDURE FOR SUB'D OF A SECTION. CTR OF E-W TRAIL IS 39' SOUTH.
---	--	---	--

C. Description of monument for corner and accessories established to perpetuate locating the position of the corner:

I-11 FD DOCK SPK OVER USFS CONC BRASS CAP MON. 8" R PINE N50°W 40.39' #16" B OAK N60°E 44.49' 9" R PINE S55°E 51.54' #18" B OAK S25°E 53.38' FD CED POST W/ LOC TAG N45°W 47' #PS R.A. GRIFFIN WIT (1963)	I-12 FD CABIN SPK OVER BRASS CAP CONC MON. # 9" R PINE N30°W 58.00' # 8" W OAK N45°E 55.15' #18" W OAK N60°E 60.22' FD CED POST W/FS LOC TAG. WEST 33' #RLS G.BLASS 1959 WIT. #PS R.GRIFFIN 1964 WIT.	1 FD 1/2" GALV PIPE. 10" W OAK N55°W 27.2' 12" W PINE N35°W 74.9' 13" B OAK S40°W 45.9' SET CED POST W/LOC TAG AT FD 1R W/RLS CAP. SOUTH 33.0'	8 FD 1/2" PIPE & SHORT STEEL FN POST FOR GUARD. ADDED CARSONITE POST. 3" TW B OAK N70°E 26.1' 2" B CHERRY S45°E 23.3' 6" W PINE S60°W 16.6' FACE 3 1/2" X 3 1/2" X 6" TALL STEEL TUBE OF N GATE POST S10°W 32.6'
---	---	--	--

Signed by Carl T. Kiiskila Date 5-16-97
 Surveyor's Michigan License No. 33981