

SURVEY & REMONUMENTATION

JAN 12 1996

COMMISSION

**LAKE COUNTY REMONUMENTATION
LAND CORNER RECORDATION CERTIFICATE
Filing Requirement of Act 74, Mich. P.A. 1970**

LIBER 003 PAGE 0312

or corners in

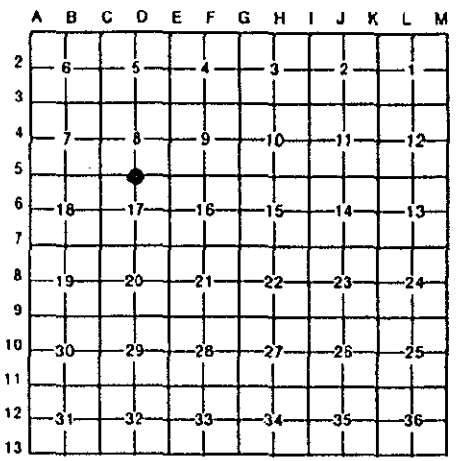
Lake (County)	Located In:		Corner Code #
	20N	14W	
Public Land Survey	T	R	D-5
	T	R	
	T	R	
	T	R	
Property Controlling in Section	S	T	R
	S	T	R
Miscellaneous Property in Sec.	S	T	R
	S	T	R

REGISTER OF DEEDS
 SEP 5 3 05 PM '95
 LAKE COUNTY, MI.
 RECORDED

Register of Deeds Stamp & File Number

Lot No. _____, Recorded Plat _____
 Private Claims _____

Robert L. Wetherell, May 19, 1995
 I hereby certify that under requirements of P.A. 74, Michigan P.A. of 1970, the corner points mentioned in lines 1 and 2 above were in conformance with regulations and rules therefore as required in the current manual of survey instructions of the United States Department of the Interior, Bureau of Land Management or by a decree of a Court of Law and/or that the corner points mentioned in lines 3, 4 and 5 above were in conformance with the rules of the Michigan Board of Land Surveyors or by a Decree of a Court of Law; established, re-established, monumented, re-monumented, recovered, found as expressed below:



NOTE: Not more than 4 corners, all in the same town and range, may be recorded on this certificate.

Description of original monument and accessories and/or subsequent restoration:
 D-5 - 1/4 corner common to Sections 8 and 17, T20N, R14W, Elk Twp., Lake Co., Mi.

1839 - John Brink, G.L.O.
 Corner in pond
 #1 - 10" Y. Pine S79°W 2.11 Chains
 #2 - 13" Y. Pine N83°W 2.20 Chains

1915 - George Johnson, Co. Surveyor
 1-1/4" Pipe
 #3 - 8" B. Oak N74°W 48 Links
 #4 - 6" W. Oak N54°E 61 Links

Gerald Gray, L.S. 17741
 Undated Section break-down showed corner on a single proportionate split.

(SEE OVER FOR CONTINUATION OF "A")

VALIDATED BY THE LAKE CO. PEER REVIEW GROUP
 IN ACCORDANCE WITH P.A. 385
 CHAIRMAN R.L.W.
 DATE 8-29-95

Description of corner evidence found and/or method applied in restoring or reestablishing corner:
 D-5 - 1/4 corner common to Sections 8 and 17, T20N, R14W, Elk Twp., Lake Co., Mi.

I found a 5" x 36" U.S.F.S. Concrete Monument 8" below the ground surface. I found all of Johnson's accessories (#3 & #4) and all of Cole's accessories (#5 thru #9).

This corner is NOT in a pond as reported by G.L.O. Johnson's survey of 1915 indicates this corner was not in a pond.

Based on the G.L.O. field notes the corner was in the pond, 60 feet more or less from the West side of the pond. Based on that information I made an extensive search for the Two (2) G.L.O. accessories. I was not able to recover the original corner or the accessories. I can only assume that in 1915 Surveyor Johnson had the same problem. Therefore he treated this corner as a lost corner and established it according to the instructions. Since 1915 there have been several surveys made in Section 8, using the Johnson corner. I cannot document any other reasonable location for this corner. Rather that upset 80 years of history, I accepted the Johnson corner as found.

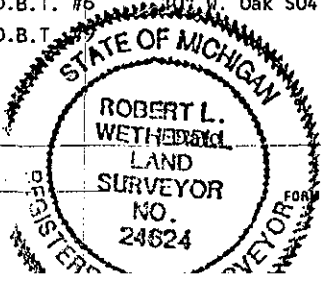
Description of monument for corner and accessories established to perpetuate locating the position of the corner:

D-5 - 1/4 corner common to Sections 8 and 17, T20N, R14W, Elk Twp., Lake Co., Mi.

I accepted the 5" x 36" Concrete Monument as a substantial monument for the corner, and is accepted as a careful and faithful re-establishment of the position of the original corner.

- 7" W. Oak S53°W 47.06' (Fd. 60d spike in N.W. side) O.B.T. #8
- 15" W. Oak N60°E 40.51' (Fd. Nail in N. side) O.B.T. #4
- 7" B. Oak S30°E 24.62' (Fd. 60d spike in W. side) O.B.T. #7
- 21" B. Oak N69°W 31.32' (Fd. Nail in S. side) O.B.T. #3
- 10" R. Pine N73°E 68.06' (Fd. 60d spike in S. side) O.B.T. #6
- 10" W. Oak S04°E 31.05' (Fd. Nail in E. side) O.B.T. #5
- 7" W. Pine N07°W 84.68' (Fd. 60d spike in W. side) O.B.T. #1

Signed by Robert L. Wetherell
 24624



August 29, 1995

Surveyor's Michigan License No. _____

SURVEY &
REMONUMENTATION

JAN 1 2 1996

COMMISSION

LIBER 003 PAGE 0313

CONTINUATION OF "A" - DESCRIPTION OF ORIGINAL MONUMENT AND ACCESSORIES AND/OR SUBSEQUENT RESTORATION

1972 - Sammy Barnett, L.S. 16923

Section break-down map shows
1/4 corner computed on single
proportionate split.

1981 - Clinton Cole, L.S. 17615

Set 1/2" re-bar from Johnson's
1915 accessories.

- #3 - 18" B. Oak N72°W 31.37' (O.B.T.)
- #4 - 14" W. Oak N55°E 40.53' (O.B.T.)
- #5 - 8" W. Oak S06°E 31.08'

1988 - Clinton Cole, L.S. 17615

L.C.R.C., Liber 3, Pg. 69.

Replaced 1/2" iron with

- 5' x 36" Conc. Mon. (U.S.F.S)
- #6 - 8" R. Pine N68°E 68.14'
- #7 - 7" R. Oak S34°E 24.72'
- #8 - 6" W. Oak S53°W 47.05'
- #9 - 5" W. Pine N12°W 84.78'