

**SURVEY &
REMONUMENTATION**

APR 28 1995

COMMISSION

LAND CORNER RECORDATION CERTIFICATE
Filing Requirement of Act 74, Mich. P.A. 1970

For corners in

<u>LAPEER</u> (County)	Located in:	Corner Code #
	DRYDEN TOWNSHIP	
1. Public Land Survey	T. <u>6N</u> R. <u>11E</u>	<u>M-10</u>
	T. <u> </u> R. <u> </u>	<u> </u>
	T. <u> </u> R. <u> </u>	<u> </u>
	T. <u> </u> R. <u> </u>	<u> </u>
2. Property Controlling in Section	S. <u> </u> T. <u> </u> R. <u> </u>	<u> </u>
	S. <u> </u> T. <u> </u> R. <u> </u>	<u> </u>
3. Miscellaneous Property in Sec.	S. <u> </u> T. <u> </u> R. <u> </u>	<u> </u>
	S. <u> </u> T. <u> </u> R. <u> </u>	<u> </u>

RECEIVED FOR RECORD

94 DEC -9 PM 3:24

LIBER NO. 5 SER. NO. 152
Melissa LaVough 153

REGISTER OF DEEDS
LAPEER COUNTY, MICHIGAN

Register of Deeds Stamp & File Number

4. Lot No. _____, Recorded Plat _____
5. Private Claims _____

I, SHELBY W. MONEY, in a field survey on NOVEMBER 10, 1994 do hereby certify that under requirements of P.A. 74, Michigan P.A. of 1970, the corner points mentioned in lines 1 and 2 above were in conformance with regulations and rules therefore as required in the current manual of survey instructions of the United States Department of the Interior, Bureau of Land Management or by a decree of a Court of Law and for that the corner points mentioned in lines 3, 4 and 5 above were in conformance with the rules of the Michigan Board of Land Surveyors or by a Decree of a Court of Law; established, re-established, monumented, re-monumented, recovered, found as expressed below:

NOTE: Not more than 4 corners, all in the same town and range, may be recorded on this certificate.

1	A	B	C	D	E	F	G	H	I	J	K	L	M
2	6	5	4	3	2	1							
3													
4	7	8	9	10	11	12							
5													
6	18	17	16	15	14	13							
7													
8	19	20	21	22	23	24							
9													
10	30	29	28	27	26	25							
11													
12	31	32	33	34	35	35							
13													

A. Description of original monument and accessories and/or subsequent restoration:

G.L.O. (1816)	PAGE 347/348	JOSEPH WAMPLER	SET POST	NO WITNESSES FOUND
SURVEY (1979) LIBER 002	PAGE 582	KAY, P.S. #		
SURVEY (1980) LIBER 003	PAGE 515	HAROLD N. ELRICH, P.S. #23510		
SURVEY (1987) UNRECORDED		KOBS AND KING		
SURVEY (1990) LIBER 005	PAGE 582	HAROLD N. ELRICH, P.S. #23510		1/2" REBAR (NOT FOUND)
SURVEY (1988) LIBER 008	PAGE 684	HAROLD N. ELRICH, P.S. #23510		
SUREYE () UNRECORDED		DUNN ENGINEERING		

B. Description of corner evidence found and/or method applied in restoring or reestablishing corner:

COULD NOT FIND IRON FROM KOBS AND KING SURVEY
NOTE: BECAUSE OF THE MANY SURVEYS ON THE EAST SIDE OF THE TOWNSHIP LINE, WE SET THE IRON ON LINE USING M-11 T.6N., R.11E / DRYDEN TOWNSHIP AND A-10 T.6N., R.12E. / ALMONT TOWNSHIP
"SEE SKETCH ON THE BACK OF THIS PAGE"

M-10 TO M-9 T.7N., T.11E. MEASURED 2617.15'
M-10 TO M-11 T.7N., T.11E. MEASURED 2988.42'

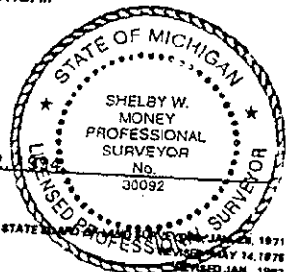
C. Description of monument for corner and accessories established to perpetuate locating the position of the corner:

SET 1/2" REBAR WITH BRASS LAPEER COUNTY REMONUMENTATION CAP MARKED #30092 / M-10 ON A 1/2" X 18" REBAR

AZIMUTH 20°	89.46'	SET,	NAIL WITH LAPEER COUNTY TAG IN THE WEST FACE OF 10" BOX ELDER
AZIMUTH 90°	8.19'	TO,	POSITION ESTABLISHED USING KOBS AND KING SURVEY IN 1987
AZIMUTH 110°	73.86'	SET,	NAIL WITH LAPEER COUNTY TAG IN THE NORTH FACE OF 16" ELM
AZIMUTH 140°	60.08'	SET,	NAIL WITH LAPEER COUNTY TAG IN THE NORTH FACE OF UTILITY POLE
AZIMUTH 340°	53.28'	SET,	NAIL WITH LAPEER COUNTY TAG IN THE NORTHEAST FACE OF A TRIPLE CHERRY
AZIMUTH 180°	219.42'	FOUND,	1/2" IRON - A-10 / T.6N., R.12E.; ALMONT TOWNSHIP

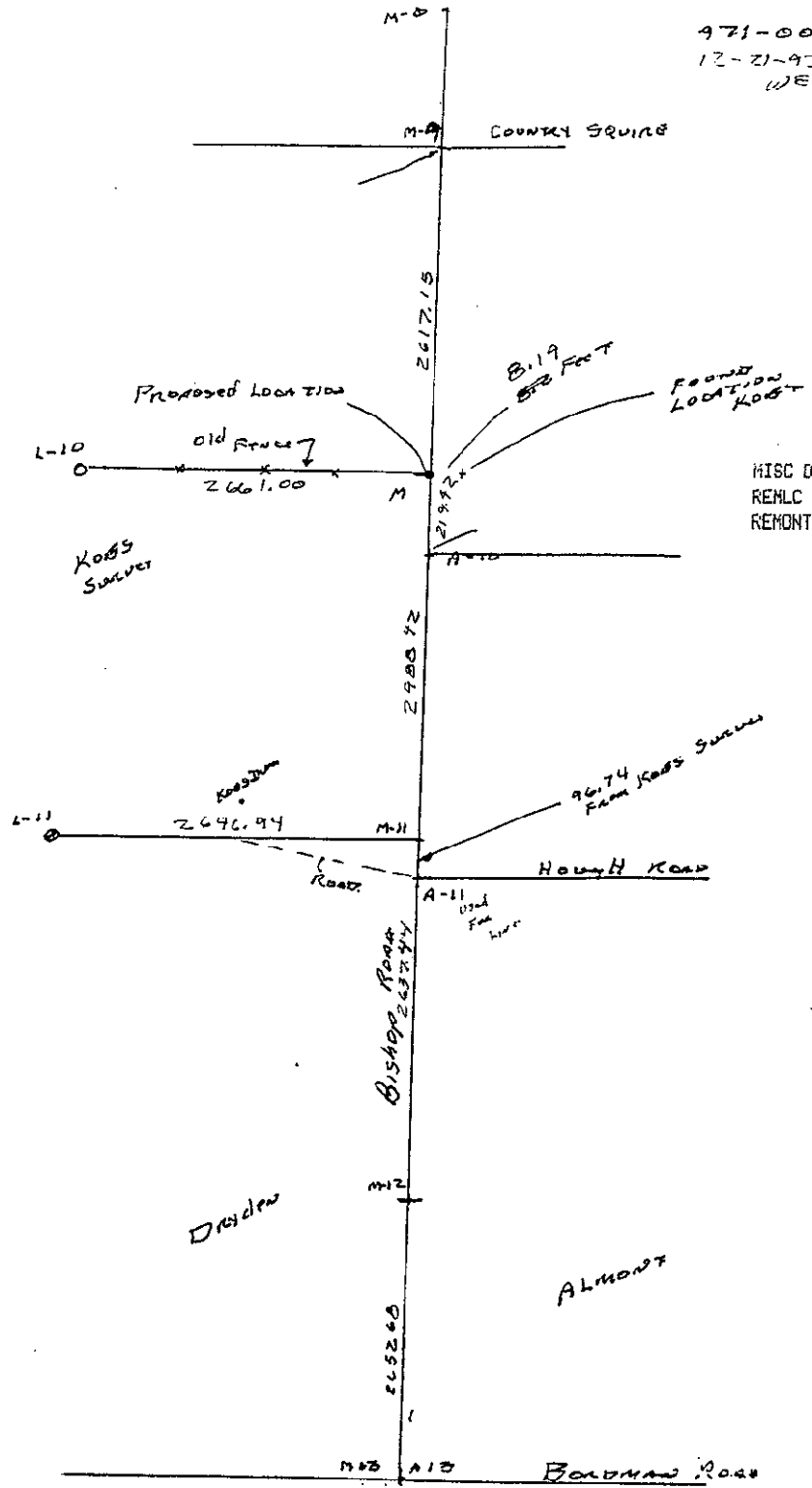
PEER GROUP
APPROVED LAND CORNER
PA 345 OF 1990
LAPEER COUNTY

Signed by [Signature]
Surveyor's Michigan License No. 60092 RAY DAVIS P.S. #30092 SURVEYOR
DATE 12-9-94



FORM APPROVED BY MICHIGAN STATE BOARD OF PROFESSIONAL SURVEYORS JAN. 25, 1971
REVISED JULY 14, 1976
REVISED JAN. 1982

971-001
12-21-93
WEX



2 MILL SPLITS 2723.72/HAND-MIC