

SURVEY  
REMONUMENTATION

APR 29 1996

COMMISSION

LAND CORNER RECORDATION CERTIFICATE

Filing Requirement of Act 74, Mich. P.A. 1970

For corners in

REMONUMENTATION

Lapeer (County)	Located in:	Corner Code #
1. Public Land Survey	T 6N R 12E	F-1
	T R	
	T R	
	T R	
2. Property Controlling in Section	S T R	
	S T R	
3. Miscellaneous Property in Sec.	S T R	
	S T R	

RECEIVED FOR RECORD

95 AUG -4 AM 11:19

LIBER NO. 005 PAGE NO. 241-  
Melissa DaVaugh 242

REGISTER OF DEEDS  
LAPEER COUNTY MICHIGAN

Register of Deeds Stamp & File Number

4. Lot No. \_\_\_\_\_, Recorded Plat \_\_\_\_\_  
5. Private Claims \_\_\_\_\_

I, Norman C. Caldwell, in a field survey on July 19 95, do hereby certify that under requirements of P.A. 74, Michigan P.A. of 1970, the corner points mentioned in lines 1 and 2 above were in conformance with regulations and rules therefore as required in the current manual of survey instructions of the United States Department of the Interior, Bureau of Land Management or by a decree of a Court of Law and/or that the corner points mentioned in lines 3, 4 and 5 above were in conformance with the rules of the Michigan Board of Land Surveyors or by a Decree of a Court of Law; established, re-established, monumented, re-monumented, recovered, found as expressed below:

NOTE: Not more than 4 corners, all in the same town and range, may be recorded on this certificate.

A. Description of original monument and accessories and/or subsequent restoration:

F-1 This position not established by the original government survey.

MDOT Highway plans, dated 1929, Project #F-004-19, File #L-4-B-5, Sec.D, Sheet 9 of 27. Do not show this corner position being monumented. The N-S 1/4 Line is not delineated on the plans.

Corner card by Lisee, MDOT survey chief dated 5-9-62

Found stone with chiseled cross. This stone was much smaller than is usually found as a corner, but it had a chiseled cross on top and it fit existing fence line (South) and centerline of road (E & W) Placed 1" pipe over stone.  
S10°W 30.23' 23" Maple  
N55°E 38.89' 9" Maple  
S70°E 57.65' 29" Maple  
N60°W 77.25' Telephone Pole

Survey by James T. Bailey, P.S. 33968 dated 2-8-92, L 9 P 681

Set 5/8" bar based on a survey recorded in L 2 P 201 (P301)?  
S45°E 62.61' Nail in PP  
S65°E 54.12' Nail in 22" Oak  
N77°E 85.79' Nail in 20" Maple  
N35°W 38.40' Nail in top of post

Unrecorded survey by Harold N. Elrich, P.S.#18986 dated June 18, 1992

Found Iron Rod  
S45°E 62.61' Nail in PP  
S65°E 54.12' Nail in 22" Oak  
N77°E 85.79' Nail in 20" Maple  
N39°W 38.40' Nail in top of post

Survey by Harold N. Elrich, P.S. 18986, dated April 27, 1973, L 2 P 68 did not use a corner for N-S 1/4 Line alignment. (used prior survey)

MDOT R.O.W. drawings dated July 1973 show a monumented position and the Township Line crossing tangent and curve. The tangent is 100.69 West of the position, the angle of crossing is 57°33'32" in N.W. quadrant, and 88.89' NW'ly of the P.I. The curve crossing is 26.50' further West and at station 259+02.32, a dimension is shown as an additional 3070.83 to the NW Corner of Section 3. (Total 1/2 mile = 3198.02)

LCRC by H.J. Kobs L.S. 14097 July 19, 1973 recorded September 14, 1973 L 2 P 339 and survey same date in L 2 P 291

Fnd 1" pipe in gravel road according to M.D.S.H. witnesses  
NE 38.73' PK nail & washer in 14" Maple  
SE 57.52' PK nail & washer in 30" Maple  
SW 30.26' Nail & M.D.S.H. cap in 24" Maple

LCRC by B. Henderson P.S. 16043 dated September 17, 1973 in L 2 P 349 and survey same date in L 2 P 301

Fnd PK Nail in Asphalt  
N20°W 38.57' Telephone pole  
N80°E 84.47' 11" Maple  
S80°E 53.91' 22" Maple

Survey by Donald H. King, P.S. 30085, dated 4-20-85, in L 7 P 74 used prior Kobs survey for alignment control.

Survey by Leland D. Bates, P.S. 16699 dated August 20, 1992, L 10 P 49

Fnd Iron Rod  
S45°E 62.61' Nail in power pole  
N77°E 85.79' Nail in 20" Maple  
S65°E 54.12' Nail in 22" Oak  
N35°W 38.40' Nail in top of post

Unrecorded survey by James T. Bailey P.S. 33968 dated 1-26-93 (Section 33, T7N-R12E)

Fnd 5/8" Iron Rod  
S45°E 62.61' Nail in PP  
S65°E 54.12' Nail in 22" Oak  
N77°E 85.79' Nail in 20" Maple  
N35°W 38.40' Nail & tag in top of post

Unrecorded LCRC by William E. Soderberg P.S. 17635, dated 11-14-94

Fnd 5/8" Rebar  
N80°E 85.00' Tag in 20" Maple  
S60°E 55.04' Tag in 22" Oak  
S30°E 65.78' Tag in utility pole  
N65°W 33.75' Chiseled "x" NW cor. conc. hdwl  
N30°W 38.35' Nail in top of post

	A	B	C	D	E	F	G	H	I	J	K	L	M
1													
2	6		5		4		3		2		1		
3													
4	7		8		9		10		11		12		
5													
6	18		17		16		15		14		13		
7													
8	19		20		21		22		23		24		
9													
10	30		29		28		27		26		25		
11													
12	31		32		33		34		35		36		
13													

Continued on Back

B. Description of corner evidence found and/or method applied in restoring or reestablishing corner:

F-1 Investigation at this site reveals three monuments at differing locations each reported to be the North 1/4 Corner of Section 4, T6N-R12E.  
 MDOT R.O.W. sheets show using an improper procedure (closing corners) for establishing alignment of the township line.

C. Description of monument for corner and accessories established to perpetuate locating the position of the corner:

F-1 Closing North 1/4 Corner, Section 4, T6N-R12E  
 Fnd 5/8" Rebar per L 2 P 349 and surveys in L 2 P 301, L 9 P 681, L 10 P 49, plus numerous unrecorded surveys. This monument is accepted as a careful and faithful determination of the position of the corner.

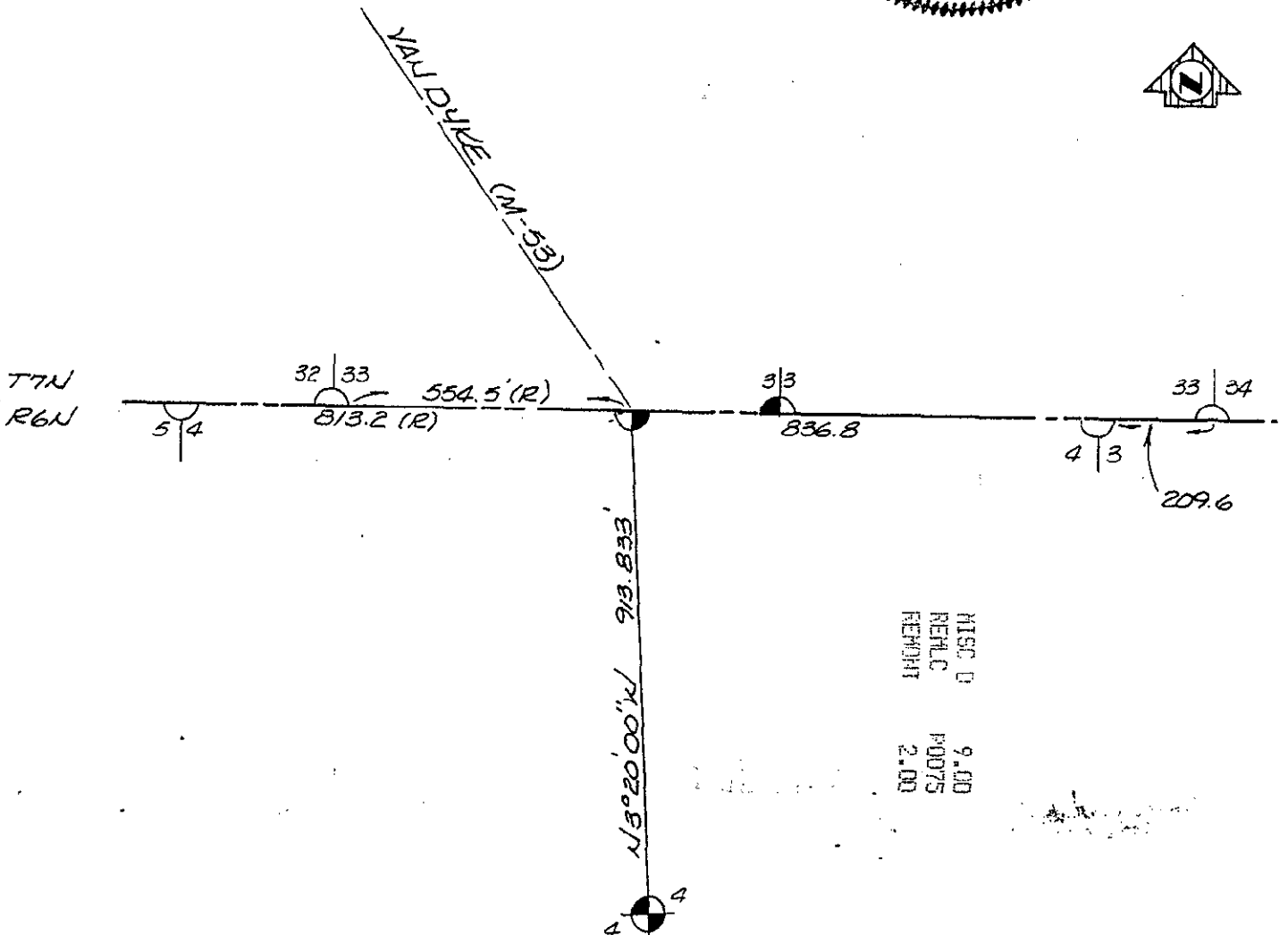
- N33°W 110.29' (33.616 m) Nail & Remon tag in E side Power Pole
- S30°E 65.62' (20.001 m) Nail & Remon tag in W side Power Pole
- S56°E 55.04' (16.776 m) Nail & Remon tag in SW side 24" Maple
- N75°E 85.02' (25.914 m) Nail & Remon tag in S side 24" Maple
- East 50.40' (15.363 m) 3/4" MDOT pipe
- East 52.77' (16.083 m) 1/2" bar by Kobs

Signed by *Norman C. Caldwell* Date 25 JULY 1995  
 Surveyor's Michigan License No. 12018

FORM APPROVED BY MICHIGAN STATE BOARD OF LAND SURVEYORS, JAN. 28, 1971  
 REVISED MAY 14, 1975  
 REVISED JAN. 1983  
 ADAPTED FOR WORD PROCESSING MARCH, 1993

PEER GROUP  
 APPROVED LAND CORNER  
 PA 345 OF 1990  
 LAPEER COUNTY

*Ray Davis*  
 RAY DAVIS P.S. CO. SURVEYOR  
 DATE APPROVED 7-20-95



MISC D 9.00  
 REHL C P0075  
 REMOHT 2.00