

SURVEY
REMONUMENTATION

APR 28 1986

COMMISSION

LAND CORNER RECORDATION CERTIFICATE

Filing Requirement of Act 74, Mich. P.A. 1970

REMONUMENTATION

For corners in Lapeer (County)	Located In:	Corner Code #
1. Public Land Survey	T 6N R 12E	F-3
	T R	
	T R	
	T R	
2. Property Controlling in Section	S T R	
	S T R	
3. Miscellaneous Property in Sec.	S T R	
	S T R	

RECEIVED FOR RECORD
95 AUG -4 AM 11:20
LIBER NO. 005 PAGE NO. 245
Melissa DeVaugh 246
REGISTER OF DEEDS
LAPEER COUNTY, MICHIGAN
Register of Deeds Stamp & File Number

4. Lot No. _____ Recorded Plat _____
5. Private Claims _____

I, Norman C. Caldwell, in a field survey on July 19 95, do hereby certify that under requirements of P.A. 74, Michigan P.A. of 1970, the corner points mentioned in lines 1 and 2 above were in conformance with regulations and rules therefore as required in the current manual of survey instructions of the United States Department of the Interior, Bureau of Land Management or by a decree of a Court of Law and/or that the corner points mentioned in lines 3, 4 and 5 above were in conformance with the rules of the Michigan Board of Land Surveyors or by a Decree of a Court of Law; established, re-established, monumented, re-monumented, recovered, found as expressed below:

NOTE: Not more than 4 corners, all in the same town and range, may be recorded on this certificate.

A. Description of original monument and accessories and/or subsequent restoration:

F-3 Position established by J. Wampler, 1818. A Hawthorn Bush is the monument (no references marked)

LCRC by H.J. Kobs L.S. 14097 June 26, 1974 recorded September 13, 1974 L 2 P 665 and survey dated June 26, 1974 L 2 P 889 and February 13, 1978 L 4 P 576, and May 22 1978 L 4 P 825 and December 9 1974 L 3 P 164 and August 19, 1995 L 3 P 467.
Fnd PK Nail & Cap in Pavement
NW 33.54' form nail & washer in top of grd.post
NE 48.95' PK nail in PP
SE 53.06' Form nail & washer in guard post

Survey by Kay Engineering dated October 27, 1976 recorded in L 3 P 871
Fnd PK Nail per L 2 P 665 (used same references)

Survey by Bernard Henderson dated November 10, 1978 recorded in L 5 P 15 & survey in L 6 P 179
Fnd Nail & Washer in Blacktop
NW 33.54' Form nail in top of guard post
NE 48.95' Nail in DE pole
SE 53.06' Nail & washer in guard post

Survey by Eary E. Gravlin, dated July 21, 1980 recorded in L 5 P 817 and surveys dated September 1, 1980 in L 5 P 914 and April 17, 1980 in L 5 P 808.
Fnd PK nail
N45°W 33.54' Nail & washer in guard post
N45°E 48.95' PK nail in power pole
S45°E 53.06' Nail & washer in guard post

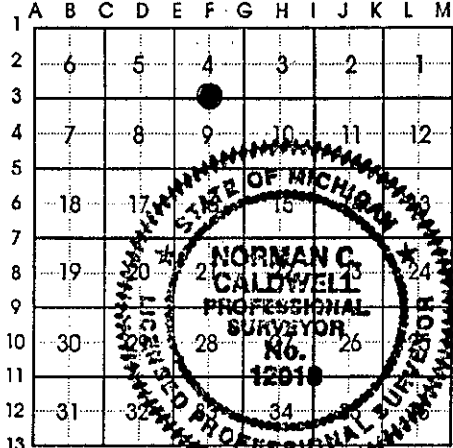
Survey by Herbert J. Kobs, P.S.14097 dated June 22, 1983 L 6 P 631 also in Lapeer Rd Comm.records
Fnd PK Nail & Washer in Pavement
NE 49.07' PK nail in PP
SE 52.92' PK nail in guard post
SW 73.75' PK nail in 9" Basswood

Survey by George H. Reichert P.S.30099 dated February 21, 1986 recorded in L 7 P 176.
Fnd PK Nail
N45°W 33.54' Nail & washer in guard post
N45°E 48.95' PK nail in DE pole
S45°E 53.06' Nail & washer in guard post

LCRC by H.J. Kobs L.S.14097 November 7, 1988 recorded April 6, 1989 L 4 P 241 and survey dated 3-11-86 L 7 P 501.
Fnd PK Nail w/Brass Washer
NE 51.87' (49.07 m) (L 7 P 501) PK nail in DEpole
East 50.00' 1/2" iron w/cap#14097(11.5'west of stop sign)
SE 70.67' Chiseled cross on NE side of steel anchor post
SW 73.75' PK nail in 9" Basswood
SE 52.92' PK nail in guard post (L 7 P 501)

LCRC by H.N. Elrich L.S.18986 February 20, 1989 recorded March 21, 1989 L 4 P 239
Fnd PK Nail
N45°E 51.90' PP
S45°E 70.60' 2" steel corner post
S70°E 79.00' Fiberglass Manhole
S45°W 81.20' 2" steel corner post

MDOT Highway plans & R.O.W. maps do not indicate a monument at this point.



B. Description of corner evidence found and/or method applied in restoring or reestablishing corner:

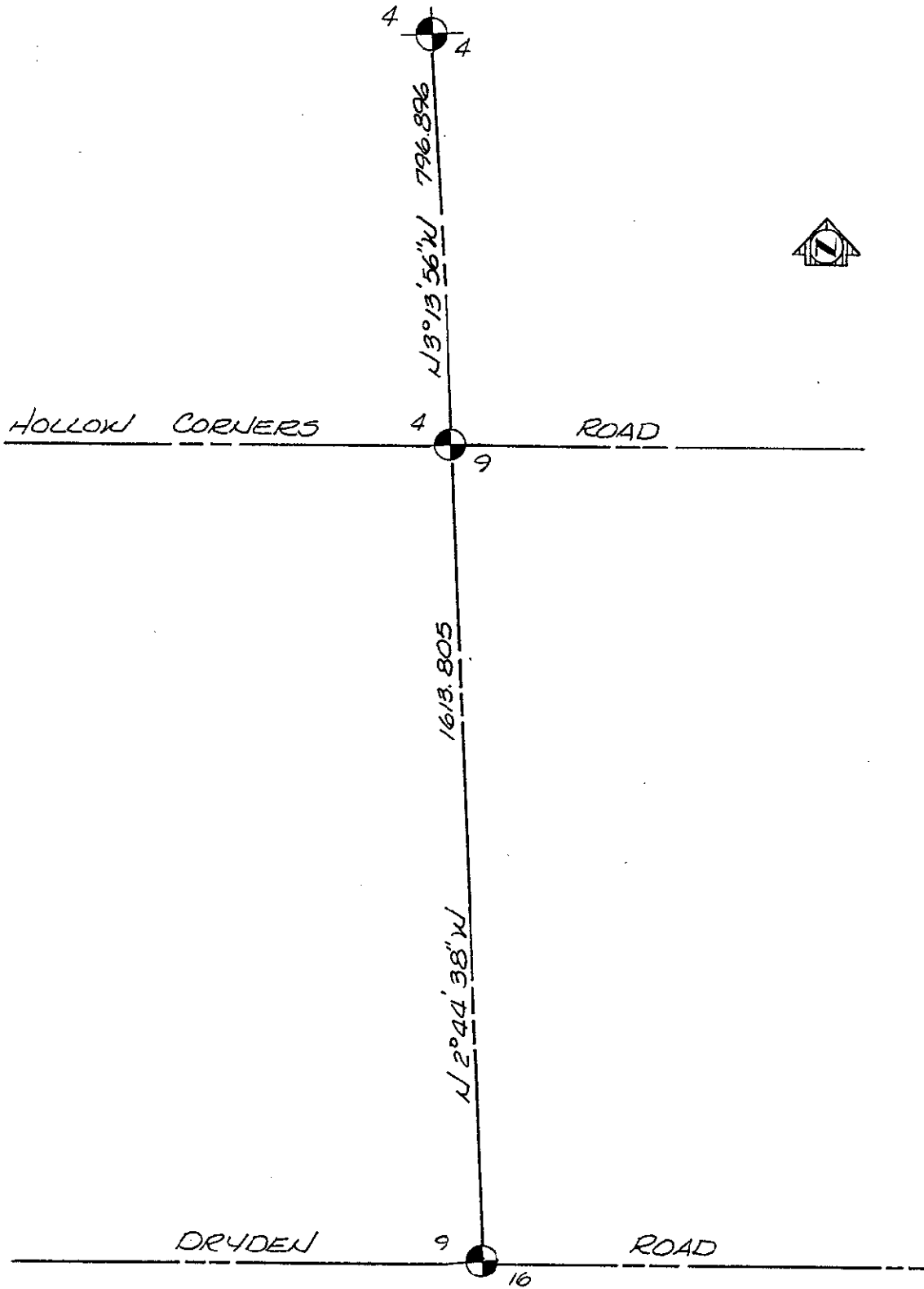
F-3 Found PK nail & tag in asphalt pavement. During excavation also found PK nail & tag in C/L joint of concrete pavement, 6" deep. There is no apparent conflicting evidence.

C. Description of monument for corner and accessories established to perpetuate locating the position of the corner:

F-3 1/4 Corner Sections 4 and 9, T6N-R12E
Found PK nail & tag @ surface of asphalt and second PK nail and tag in center joint of concrete pavement (6" deep) placed 1/2" bar w/remon cap in monument box and is accepted as the best available evidence of the position of the original corner.

N62°E 51.36' (15.655 m) Nail & remon tag in N side PP
S78°E 119.18' (36.326 m) NW corner of building
S48°E 149.08' (45.440 m) SW corner of building
S55°W 73.22' (22.318 m) Nail & remon tag in E side 12" Basswood

Signed by Norman C. Caldwell Date 25 JULY 1995
Surveyor's Michigan License No. 12018 LIBER 005 PAGE 0245



MISC. D 9.00
 REHL.C. P0075
 REMONT 2.00

PEER GROUP
 APPROVED LAND CORNER
 PA 345 OF 1990
 LAPEER COUNTY

RAY DAVIS P.S. CO. SURVEYOR
 DATE APPROVED 7-20-95