

SURVEY &
REMONUMENT

APR 20

COMMISSIONER

LAND CORNER RECORDATION CERTIFICATE

Filing Requirement of Act 74, Mich. P.A. 1970
REMONUMENTATION

For corners in Lapeer (County)	Located In:	Corner Code #
1. Public Land Survey	T 6N R 12E	F-5
	T R	
	T R	
	T R	
2. Property Controlling in Section	S T R	
	S T R	
3. Miscellaneous Property in Sec.	S T R	
	S T R	
4. Lot No. _____, Recorded Plat _____		
5. Private Claims _____		

RECEIVED FOR RECORD
95 AUG -4 AM 11:21
LIBER NO 005 PAGE NO. 247-
Melissa D. Vaughn
REGISTER OF DEEDS
LAPEER COUNTY, MICHIGAN
Register of Deeds Stamp & File Number

I, Norman C. Caldwell, in a field survey on July 19 95, do hereby certify that under requirements of P.A. 74, Michigan P.A. of 1970, the corner points mentioned in lines 1 and 2 above were in conformance with regulations and rules therefore as required in the current manual of survey instructions of the United States Department of the Interior, Bureau of Land Management or by a decree of a Court of Law and/or that the corner points mentioned in lines 3, 4 and 5 above were in conformance with the rules of the Michigan Board of Land Surveyors or by a Decree of a Court of Law; established, re-established, monumented, re-monumented, recovered, found as expressed below:

	A	B	C	D	E	F	G	H	I	J	K	L	M
1													
2	6	5	4	3	2	1							
3													
4	7	8	9	10	11	12							
5													
6	18	17	16	15	14	13							
7													
8	19	20	21	22	23	24							
9													
10	30	29	28	27	26	25							
11													
12	31	32	33	34	35	36							
13													

NOTE: Not more than 4 corners, all in the same town and range, may be recorded on this certificate.

A. Description of original monument and accessories and/or subsequent restoration:

F-5 Post placed by J. Wampler 1818
S36°E 6 lks (3.96') 6" Birch
N34°W 8 lks (5.28') 10" Do.(Birch)

Survey by Harold N. Elrich P.S. 18986, dated October 18, 1977 recorded in L 4 P 395 and March 27, 1986 recorded in L 7 P 190 also in Lapeer County Road Commission records
Set a PK Nail (1977)
N45°W 75.04' 40" Maple
S45°W 76.68' 40" Maple
S45°E 64.78' PP

Survey by Harold N. Elrich P.S.18986 dated October 7, 1985 recorded in L 7 P 126.
Fnd PK Nail, 17.65' West of centerline of Highway M-53.

LCRC by E.E. Gravlin L.S.23510 recorded October 28, 1988 L 4 P 173 and surveys dated July 21, 1980 recorded in L 5 P 817 and L 6 P 38.
Fnd PK Nail
N45°W 75.04' to 40" Maple
S45°W 76.68' to 40" Maple
S45°E 64.78' PP

Unrecorded surveys by James T. Bailey, P.S.33968 dated February 24, 1994 and June 8, 1993
Fnd PK Nail
N45°W 75.04' 40" Maple
S45°W 76.68' 40" Maple
S45°E 64.78' PP

MDOT plans and R.O.W. maps do not show this as an existing monument.

B. Description of corner evidence found and/or method applied in restoring or reestablishing corner:

F-5 Found PK Nail per record. There is no apparent conflicting evidence.



C. Description of monument for corner and accessories established to perpetuate locating the position of the corner:

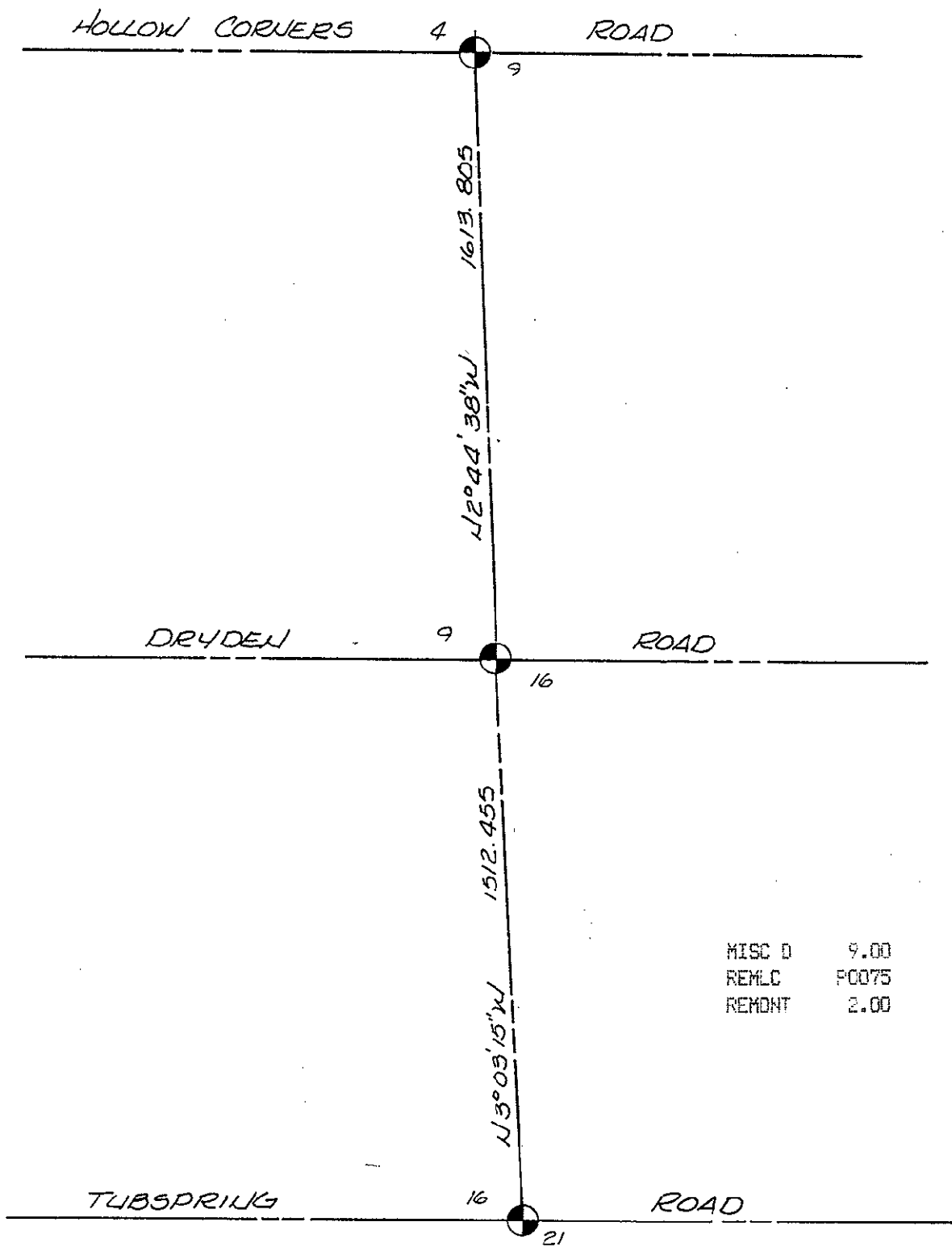
F-5 1/4 Corner Section 9 and 16, T6N-T12E

Found record PK Nail per L.C.R.C. in L 4 P 173 and surveys in L 4 P 395, L 5 P 817, L 6 P 38, L 7 P 126&190 Placed 1/2" Bar w/Remon Cap in Monument Box and is accepted as the best available evidence of the position of the original corner.

N35°W 75.41' (22.985 m) Nail & remon tag in NE side 42" Maple
N27°E 132.12' (40.270 m) Nail & remon tag in NW side PP
S65°E 69.69' (21.242 m) Nail & remon tag in SW side PP
S68°W 94.57' (28.825 m) Nail & remon tag in S side telephone pole
N85°E 6.50' (1.981 m) Small PK nail in pavement

Signed by Norman C. Caldwell Date 25 JULY 1995

Surveyor's Michigan License No. 12018



MISC D	9.00
REMLC	P0075
REHMT	2.00

PEER GROUP
APPROVED LAND CORNER
PA 345 OF 1990
LAPEER COUNTY

RAY DAVIS P.S. CO. SURVEYOR
DATE *Approved 7-20-95*