

**SURVEY &
REMONUMENTATION**

APR 29 1996

COMMISSION LAND CORNER RECORDATION CERTIFICATE

Filing Requirement of Act 74, Mich. P.A. 1970

REMONUMENTATION

For corners in Lapeer (County)	Located In:	Corner Code #
1. Public Land Survey	T 6N R 12E	F-7
	T R	
	T R	
	T R	
2. Property Controlling in Section	S T R	
	S T R	
3. Miscellaneous Property in Sec.	S T R	
	S T R	

RECEIVED FOR RECORD

95 AUG -4 AM 11:24

LIBER NO. 005 PAGE NO. 249
Melissa DeVaugh

REGISTER OF DEEDS
LAPPEER COUNTY, MICHIGAN
Register of Deeds Stamp & File Number

4. Lot No. _____, Recorded Plat _____
5. Private Claims _____

I, Norman C. Caldwell, in a field survey on July 19 95, do hereby certify that under requirements of P.A. 74, Michigan P.A. of 1970, the corner points mentioned in lines 1 and 2 above were in conformance with regulations and rules therefore as required in the current manual of survey instructions of the United States Department of the Interior, Bureau of Land Management or by a decree of a Court of Law and/or that the corner points mentioned in lines 3, 4 and 5 above were in conformance with the rules of the Michigan Board of Land Surveyors or by a Decree of a Court of Law, established, re-established, monumented, re-monumented, recovered, found as expressed below:

	A	B	C	D	E	F	G	H	I	J	K	L	M
1													
2	6	5	4	3	2	1							
3													
4	7	8	9	10	11	12							
5													
6	18	17	16	15	14	13							
7													
8	19	20	21	22	23	24							
9													
10	30	29	28	27	26	25							
11													
12	31	32	33	34	35	36							
13													

NOTE: Not more than 4 corners, all in the same town and range, may be recorded on this certificate.

A. Description of original monument and accessories and/or subsequent restoration:

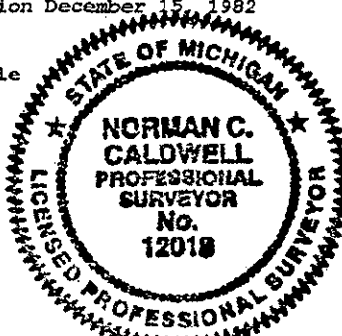
F-7 Post placed by J. Wampler 1818 P 548
S45°W 6 lks (3.96') 5" Ironwood
S67°E 13 lks (8.58') 16" Elm

Survey by G. Bates, June 23 1868 and May 2, 1869
P 88-89 Book 3, Lapeer County
N73°10'E 8" Sugar 7 paces

Lapeer County Road Commission December 15, 1982
1/2" Pipe (no source)
N05°W 169.12' 24" Ash
N45°W 39.27' Telephone pole
S80°W 121.36' Power pole
S80°E 96.4' Power pole

L.C.R.C, by H.J. Kobs L.S.14097 May 8, 1984
recorded October 2, 1984 L 4 P 84 and survey in L
6 P 799 recorded May 8, 1984
Fnd 1/2" Pipe
NNW 169.12' PK nail 24" Ash
NW 39.27' PK nail telephone pole
WSW 121.36' PK nail power pole
ESE 96.40' PK nail power pole

LCRC by H.G. Avey L.S.15396 October 17, 1984
recorded September 5, 1985 L 4 P 110 and survey
dated October 17, 1984 (not recorded)
Fnd 1/2" Pipe
NNW 169.12' PK nail 24" Ash
NW 39.27' PK nail telephone pole
WSW 121.36' PK nail power pole
ESE 96.40' PK nail power pole



B. Description of corner evidence found and/or method applied in restoring or reestablishing corner:

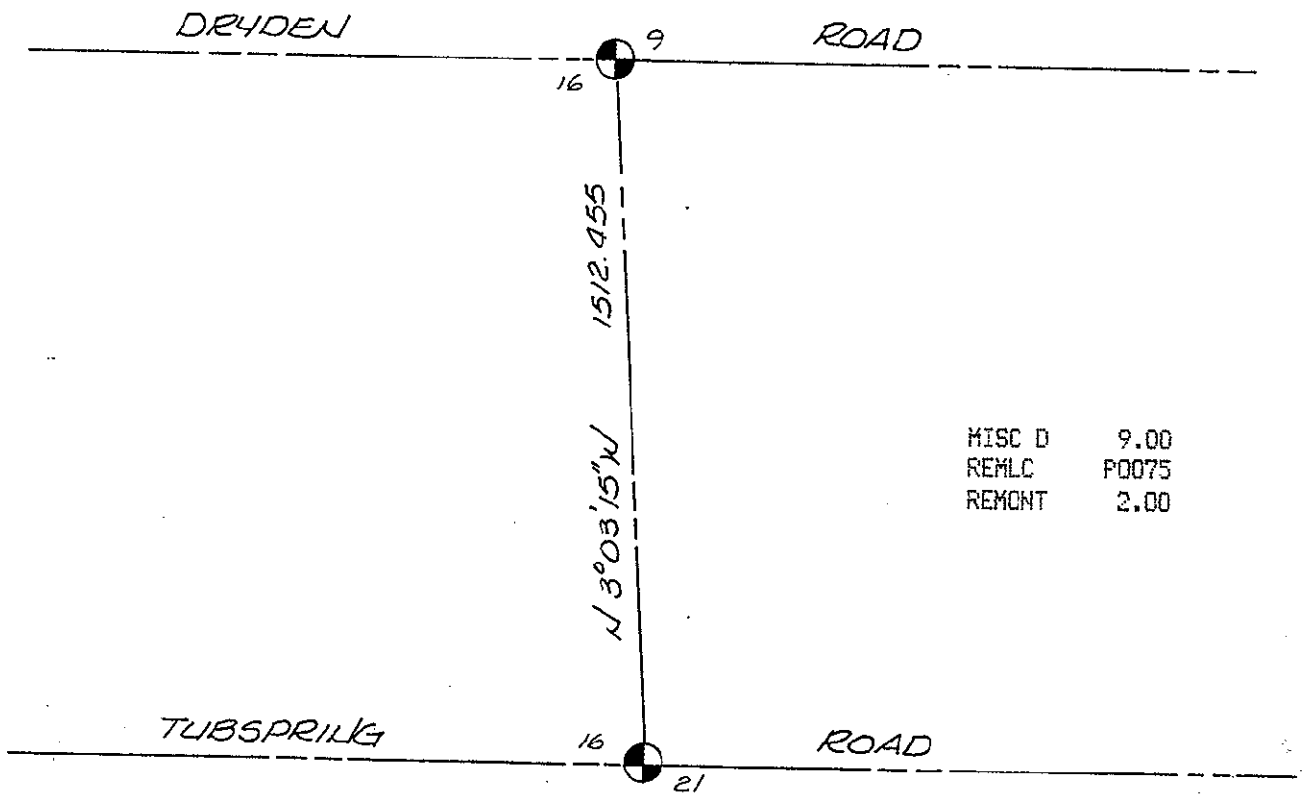
F-7 Found record 1/2" pipe, in line w/old fence and tree line south. The plat of "Barnes Acres" in the Southeast quadrant of this intersection does not tie to a point representing this corner. There is no apparent conflicting evidence.

C. Description of monument for corner and accessories established to perpetuate locating the position of the corner:

F-7 1/4 Corner Sections 16 and 21, T6N-R12E

Found record 1/2" pipe per L.C.R.C in L 4 P 84, L 4 P 110 and survey in L 6 P 799 Placed 1/2" Bar w/remon cap inside pipe and is accepted as the best available evidence of the position of the original corner.
N05°W 169.55' (51.679 m) Nail & remon tag in 24" Ash
S93°E 96.22' (29.328 m) Nail & remon tag in Power pole
S80°W 121.28' (36.966 m) Nail & remon tag in telephone pole
N52°W 39.31' (11.982 m) Nail & remon tag in power pole

Signed by *Norman C. Caldwell* Date 25 JULY 1995
Surveyor's Michigan License No. 12018



MISC D 9.00
REMLC P0075
REMCNT 2.00

PEER GROUP
APPROVED LAND CORNER
PA 345 OF 1990
LAPEER COUNTY

Ray Davis
RAY DAVIS P.S. CO. SURVEYOR
DATE *7-20-95* APPROVED