

SURVEY & REMONUMENTATION

APR 29 1996

COMMISSION

LAND CORNER RECORDATION CERTIFICATE

Filing Requirement of Act 74, Mich. P.A. 1970
REMONUMENTATION

For corners in

Lapeer (County)	Located In:	Corner Code #
1. Public Land Survey	T 6N R 12E	G-8
	T R	
	T R	
	T R	
2. Property Controlling in Section	S T R	
	S T R	
3. Miscellaneous Property in Sec.	S T R	
	S T R	

4. Lot No. _____, Recorded Plat _____
5. Private Claims _____

RECEIVED FOR RECORD

95 AUG -4 AM 11:25

LIBER NO. 005 PAGE NO. 251
Melissa DuVough 252
REGISTER OF DEEDS
LAPEER COUNTY MICHIGAN

Register of Deeds Stamp & File Number

I, Norman C. Caldwell, in a field survey on July 19 95, do hereby certify that under requirements of P.A. 74, Michigan P.A. of 1970, the corner points mentioned in lines 1 and 2 above were in conformance with regulations and rules therefore as required in the current manual of survey instructions of the United States Department of the Interior, Bureau of Land Management or by a decree of a Court of Law and/or that the corner points mentioned in lines 3, 4 and 5 above were in conformance with the rules of the Michigan Board of Land Surveyors or by a Decree of a Court of Law; established, re-established, monumented, re-monumented, recovered, found as expressed below:

NOTE: Not more than 4 corners, all in the same town and range, may be recorded on this certificate.

A. Description of original monument and accessories and/or subsequent restoration:

G-8 Post placed by J. Wampler 1818
S30°E 16 lks (10.56') 5" Aspen
N 9°E 30 lks (19.8 ') 8" Birch

Survey by G. Bates October 9-14, 1865 and April 18, 1873 P 94 Book 3
Stone 18x14x10 w/stone 18x12x9 brick on top
N87°E 3.22 ch. (212.52') 10" Elm
S364°E 121.75 lks (80.35') 11" Willow
S824°W 398.5 lks (263.0 ') 22" Burn Oak

MDOT Highway plans dated 1924, 1926, 1955.
Ford Axle
S45°W 43.3' 24" Maple
S50°E 29.4' 8" Maple
N60°E 39.7' 16" Maple
East 27.9' W edge concrete walk

Unrecorded boundary survey by Herbert Avey, P.S.15396 dated December 11, 1967 for Village of Almont.
Fnd 3/4" Pipe
West 31.36' 16d Nail in N face 30" Maple
NE 40.04' 16d Nail in SE face 20" Maple
SE 43.62' 16d Nail in SW face 20" Maple

Survey by Robert G. Kay, P.S.14096 dated September 28, 1971 recorded in L 1 P 145.
Fnd 1" Iron Pipe
S50°W 110.20' NE corner garage foundation
N55°W 91.20' SE corner house foundation
S85°E 24.55' West stem fire hydrant
West 33.00' Iron Bar

Survey by Herbert J. Kobs, P.S.14097 dated July 31, 1973, recorded in L 2 P 361
Fnd 3/4" Pipe
SW 31.54' 36" Maple
NE 58.63' D.E. pole
NE 39.8 ' 30" Maple

LCRC by H.J. Kobbs L.S.14097 May 8, 1984 recorded October 7, 1984 L 4 P 84
Fnd 1/2" Iron Bar
WSW 31.54' PK nail in 36" Maple
NNE 58.75' PK nail in telephone pole
ESE 25.48' Center top of fire hydrant
NE 40.18' PK nail in 30" Maple

Lapeer County Road Commission (no source) January 26, 1988
3/4" Pipe
WSW 31.54' PK 36" Maple
NE 39.96' PK 30" Maple
NNE 88.6 ' PK power pole

Lapeer County Road Commission (April 11, 1988)
No Monument Given
N65°W 91.2' SE cor ho. fnd
S50°W 110.2' NE corner garage fnd
S85°E 24.55' W stem fire hydrant

Unrecorded survey by Russell L. Brown, P.S.24588 (Kay Engineering) dated 1994
Fnd 1/2" Iron
N70°E 39.35' 30" Maple Tree
N20°E 58.83' Nail in power pole
S80°E 27.13' Top of fire hydrant

	A	B	C	D	E	F	G	H	I	J	K	L	M
1													
2	6	5	4	3	2	1							
3													
4	7	8	9	10	11	12							
5													
6	18	17	16	15	14	13							
7													
8	19	20	21	22	23	24							
9													
10	30	29	28	27	26	25							
11													
12	31	32	33	34	35	36							
13													

B. Description of corner evidence found and/or method applied in restoring or reestablishing corner:

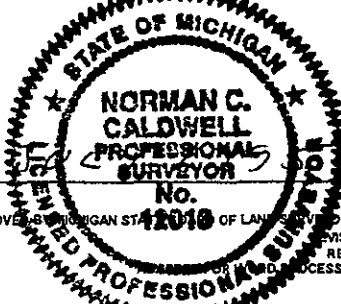
G-8 Found 3/4" pipe in monument box, placed 1/2" bar in pipe and remon cap on bar. There is no apparent conflicting evidence.

C. Description of monument for corner and accessories established to perpetuate locating the position of the corner:

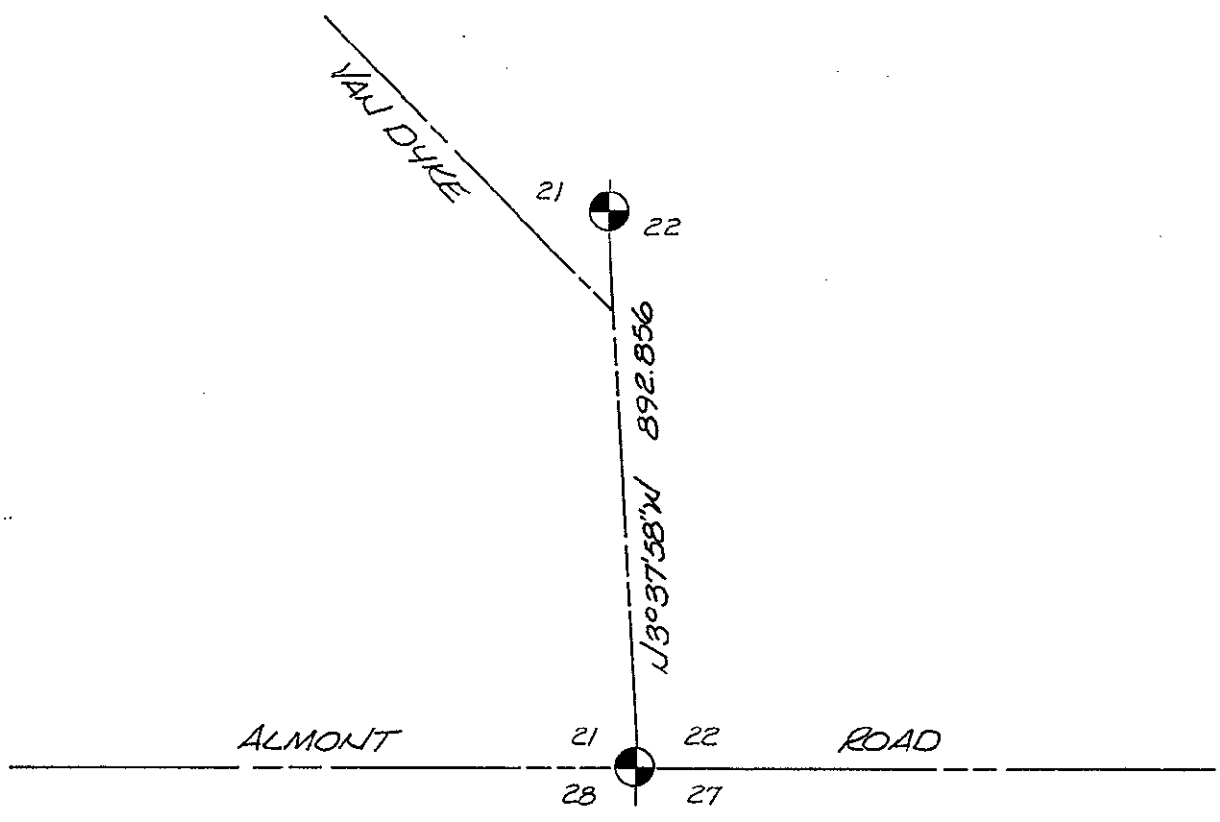
G-8 1/4 Corner Sections 21 and 22, T6N-R12E

Found 3/4" Pipe in monument box, placed 1/2" bar in pipe and remon cap on bar and is accepted as the best available evidence of the position of the original corner.
N22°E 58.76' (17.910 m) Nail and remon tag in power pole
N63°E 40.30' (12.283 m) Nail and remon tag in 30" Maple
S16°W 107.54' (32.778 m) Nail and remon tag in 36" Maple
N33°W 60.04' (18.300 m) Nail and remon tag in 24" Maple
S88°E 27.12' (8.266 m) Center top of fire hydrant

Signed by Norman C. Caldwell Date 25
Surveyor's Michigan License No. 12018



FORM APPROVED BY MICHIGAN STATE BOARD OF LAND SURVEYORS, JAN. 28, 1971
REVISED MAY 14, 1975
REVISED JAN, 1983
REVISED MARCH, 1993



PEER GROUP
 APPROVED LAND CORNER
 PA 345 OF 1990
 LAPEER COUNTY

Ray Davis
 RAY DAVIS P.S. CO. SURVEYOR
 DATE 7-20-95 *Approved*

MISC 0 9.00
 REM/C 9.00
 REMOVT 2.00