

SURVEY & REMONUMENTATION

LAND CORNER RECORDATION CERTIFICATE

APR 28 1996

Filing Requirement of Act 74, Mich. P.A. 1970

For corners in **COMMISSION**
Lapeer (County)

REMONUMENTATION

Located In: Corner Code #

- 1. Public Land Survey T 6N R 12E G-9
T _____ R _____
T _____ R _____
T _____ R _____
- 2. Property Controlling S _____ T _____ R _____
in Section S _____ T _____ R _____
- 3. Miscellaneous S _____ T _____ R _____
Property in Sec. S _____ T _____ R _____
- 4. Lot No. _____, Recorded Plat _____
- 5. Private Claims _____

RECEIVED FOR RECORD

95 AUG -4 AM 11:26

LIBER NO. 005 PAGE NO. 253-237
Melissa DeVaugh
Register of Deeds Stamp & File Number
REGISTER OF DEEDS
LAPEER COUNTY, MICHIGAN

I, Norman C. Caldwell, in a field survey on July 19 95, do hereby certify that under requirements of P.A. 74, Michigan P.A. of 1970, the corner points mentioned in lines 1 and 2 above were in conformance with regulations and rules therefore as required in the current manual of survey instructions of the United States Department of the Interior, Bureau of Land Management or by a decree of a Court of Law and/or that the corner points mentioned in lines 3, 4 and 5 above were in conformance with the rules of the Michigan Board of Land Surveyors or by a Decree of a Court of Law; established, re-established, monumented, re-monumented, recovered, found as expressed below:

	A	B	C	D	E	F	G	H	I	J	K	L	M
1													
2	6		5		4		3		2		1		
3													
4	7		8		9		10		11		12		
5													
6	18		17		16		15		14		13		
7													
8	19		20		21		22		23		24		
9													
10	30		29		28		27		26		25		
11													
12	31		32		33		34		35		36		
13													

NOTE: Not more than 4 corners, all in the same town and range, may be recorded on this certificate.

A. Description of original monument and accessories and/or subsequent restoration:

G-9 Post placed by J. Wampler 1818 P 544
N64°W 24 lks (15.84') 3" Symm
S58°E 32 lks (21.12') 6" Do.

Survey by G. Bates Book 3 P 94-95 October 9-14, 1865 and April 18, 1873
Wrought Iron Stake, Brick & Smiths Cinders
S52°W 38.25' lks (25.24') stone
S55°E 78.5' lks (51.87') stone

LCRC by H.J. Kobs L.S.14097 August 5, 1975 recorded October 3, 1975 L 3 P 93 and surveys in L 5 P 179, 611, 919 and L 6 P 632 & 630. Also in Lapeer County Road Commission Records (Sec. 28)
Fnd PK Nail in Pavement
NE 42.71' Top of hydrant
SE 53.11' NW corner of building
SW 39.73' Top of fire hydrant

MDOT highway plans dated 1924, 1926 and 1955 c.s.44031U, file H-15-C-5
1" Square Bar Station 26+68
SW 41.3' Valve stem fire hydrant
SE 51.1' NW corner hardware store
NE 41.7' Valve stem fire hydrant
Deflection angle of 0°10' right

Survey by Charles S. Getz, P.S.25843 dated January 10, 1980 recorded in L 5 P 603 and L 6 P 158 dated January 25, 1982
Fnd mark on manhole cover
S45°E 46.95' Head of bolt @NW Cor.base of street light
N45°E 46.56' Top of bolt, fire hydrant
N45°W 50.65' Head of bolt @SE cor.base of street light
S45°W 49.90' Top of bolt, fire hydrant

Survey by Robert G. Kay, P.S.14096 dated September 20, 1971 recorded in L 1 P 145
Mark on lid of manhole
S45°W 41.10' to top of fire hydrant
N30°W 50.40' to street lamp base
N40°E 41.45' to top of fire hydrant

Unrecorded survey by Russell L. Brown, P.S.24588 dated 1994 (Kay Engineering)
Fnd mark on manhole cover
S45°W 46.95' Bolt in NW cor light base
N45°W 50.65' Bolt in SE cor light base
N45°E 46.55' Top of fire hydrant

LCRC by H.G. Avey L.S.15396 December 6, 1971 recorded February 10, 1972 L 1 P 55 and unrecorded boundary survey for Village of Almont dated December 11, 1967. Also in Lapeer County Road Commission (Section 27)
Fnd PK Nail in Pavement
NE 49.13' Cover bolt on base of light pole
SE 48.84' Cover bolt on base of light pole
SW 46.70' Cover bolt on base of light pole
NW 49.86' Cover bolt on base of light pole

B. Description of corner evidence found and/or method applied in restoring or reestablishing corner:

G-9 There is controversy regarding the proper position of this corner. One position was found to be a PK nail near the West edge of a sanitary manhole, another is in the manhole cover. All evidence of the original corner and the "Bates" monument has been destroyed by installation of the sanitary manhole. The oldest remaining evidence is the May 1922 field notes of MDOT (S.T.L. 53-10) by John White from which the plans recited in part "A" were prepared. I have reconstructed the MDOT record alignment and topographic features and determined the position in the manhole cover is the oldest and most reliable. The fire hydrants are not in the 1922 position, (manufactured in 1974 and 1975) but by coincidence are similar distances from the true corner position.

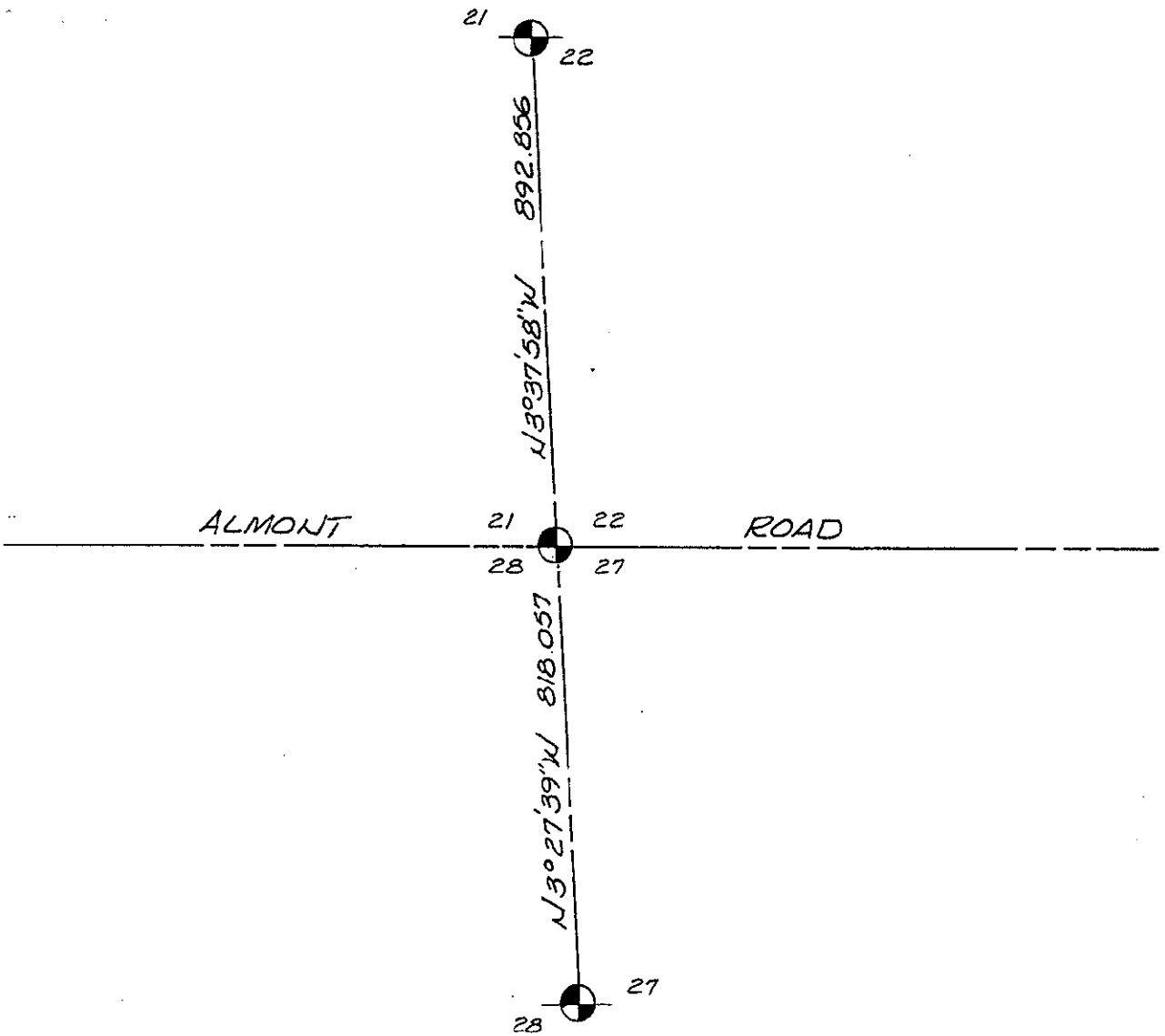
C. Description of monument for corner and accessories established to perpetuate locating the position of the corner:

G-9 Section Corner 21, 22, 27, and 28, T6N-R12E
Fnd Chiseled "+" in manhole cover per surveys in L 1 P 145, L 5 P 603 and L 6 P 158 and is accepted as the best available evidence of the position of the original corner.
N45°W 55.73' (16.987 m) 1/2" bar w/cap
N50°E 46.06' (14.04 m) Center top of fire hydrant
S55°E 47.31' (14.420 m) SW bolt of light pole base
S45°W 50.43' (15.370 m) Center top of fire hydrant
West 2.05' (0.625 m) 1/2" bar in monument box as a preservation of H. Avey P.K. nail
South 26.50' (8.076 m) RR spike in monument box

Signed by Norman C. Caldwell Date 25 JULY 1995
Surveyor's Michigan License No. 12018

FORM APPROVED BY MICHIGAN STATE BOARD OF LAND SURVEYORS, JAN 1972





MISC D
REMLC
REMONI

9.00
POU75
2.00

PEER GROUP
APPROVED LAND CORNER
PA 345 OF 1990
LAPEER COUNTY
RAY DAVIS P.S. CO. SURVEYOR
DATE APPROVED 7-20-95