

SURVEY & REMONUMENTATION

APR 29 1996

LAND CORNER RECORDATION CERTIFICATE

COMMISSION

Filing Requirement of Act 74, Mich. P.A. 1970

REMONUMENTATION

For corners in		Located In:	Corner Code #
Lapeer	(County)		
1. Public Land Survey		T 6N R 12E	G-10
		T R	
		T R	
		T R	
2. Property Controlling in Section	S	T R	
	S	T R	
3. Miscellaneous Property in Sec.	S	T R	
	S	T R	

RECEIVED FOR RECORD

95 AUG -4 AM 11: 27

LIBER NO 005 PAGE NO. 253
Melissa D. Vaughn 256
REGISTER OF DEEDS
LAPEER COUNTY, MICHIGAN

Register of Deeds Stamp & File Number

4. Lot No. _____, Recorded Plat _____
5. Private Claims _____

I, Norman C. Caldwell, in a field survey on July 19 95, do hereby certify that under requirements of P.A. 74, Michigan P.A. of 1970, the corner points mentioned in lines 1 and 2 above were in conformance with regulations and rules therefore as required in the current manual of survey instructions of the United States Department of the Interior, Bureau of Land Management or by a decree of a Court of Law and/or that the corner points mentioned in lines 3, 4 and 5 above were in conformance with the rules of the Michigan Board of Land Surveyors or by a Decree of a Court of Law; established, re-established, monumented, re-monumented, recovered, found as expressed below:

NOTE: Not more than 4 corners, all in the same town and range, may be recorded on this certificate.

A. Description of original monument and accessories and/or subsequent restoration:

G-10 Post set by J. Wampler 1818 P 543
S25°W 26 lks (17.16') 14" Aspen
N 2°E 26 lks (17.16') 4" Do

Survey by G. Bates May 6 & 7, 1872
Book 3 P 106 & 107
N77°50'W 67 lks (44.22') 10" Apple
S 9½° W 2.14 chs (141.2') 15" Elm
N77°50'W 77.5 lks (51.15') 9" Apple

MDOT highway plans dated 1924, 1926 and 1955,
C.S.44031, File #H-15-C-5
Ford Axle for 1/4 Post, Sta.0+00
SW 34.8' 16" Maple
NE 32.8' 10" Maple
NW 35.9' 14" Maple

Herbert G. Avey, P.S. 15396
Unrecorded boundary survey for Village of Almont
dated December 11, 1967
PK Nail in Pavement
WNW 29.12' 16d nail in S face guy pole
East 31.94' 16d nail in S face 30" Maple
SE 55.75' 16d nail in W face 15" Walnut

Lapeer County Road Commission (no source) Section
28, March 20, 1974
NE 37.64' Top fire hydrant
NW 29.11' Spike in DE pole
SE 55.77' Spike in 24" tree

LCRC by Herbert J. Kobs L.S.14097 March 20, 1974
recorded May 16, 1974 L 2 P 575 and surveys in L
5 P 179&611, L 6 P 632
Fnd PK Nail in C/L of Blacktop Road Reset w/1/2"
Iron Bar and cap 14097
NE 37.64' Fire hydrant
NW 29.11' Spike in DE pole
SE 55.77' Spike in 24" tree

Survey by Charles Getz, P.S.25843 (Kay
Engineering, Inc.) dated January 10, 1980
recorded in L 5 P 603
Fnd PK Nail
N85°W 29.0' Street light pole
N30°E 39.55' Fire hydrant top
East 60.25' NW corner of Edison tower

Lapeer County Road Commission (Section 27) (no
source) March 24, 1988
PK w/cap #14097
WNW 28.94' Spike S side power pole
NNE 39.36' Fire hydrant top
East 60.54' Chiseled "+" N side NW leg-tower
SSE 55.79' PK nail in 26" tree

B. Description of corner evidence found and/or method applied in restoring or reestablishing corner:

G-10 Found record PK nail at S edge of sanitary manhole. All evidence of original and MDOT monument has been destroyed by installation of sanitary manhole. There is no apparent evidence of a conflicting position.

C. Description of monument for corner and accessories established to perpetuate locating the position of the corner:

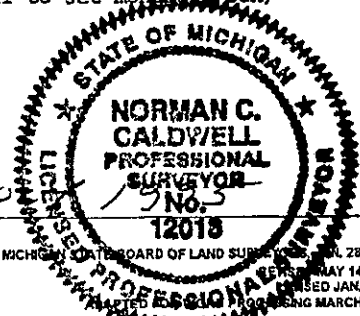
G-10 1/4 Corner Sections 27 and 28, T6N-R12E

Found record PK nail per LCRC in L 2 P 575 and surveys in L 5, P 65, P 179, 603 & 611, L 6 P 632 and replaced w/1/2" bar and remon cap drilled into concrete and steel structure and is accepted as a careful and faithful perpetuation of the position of the original corner. (not practical to set monument box)

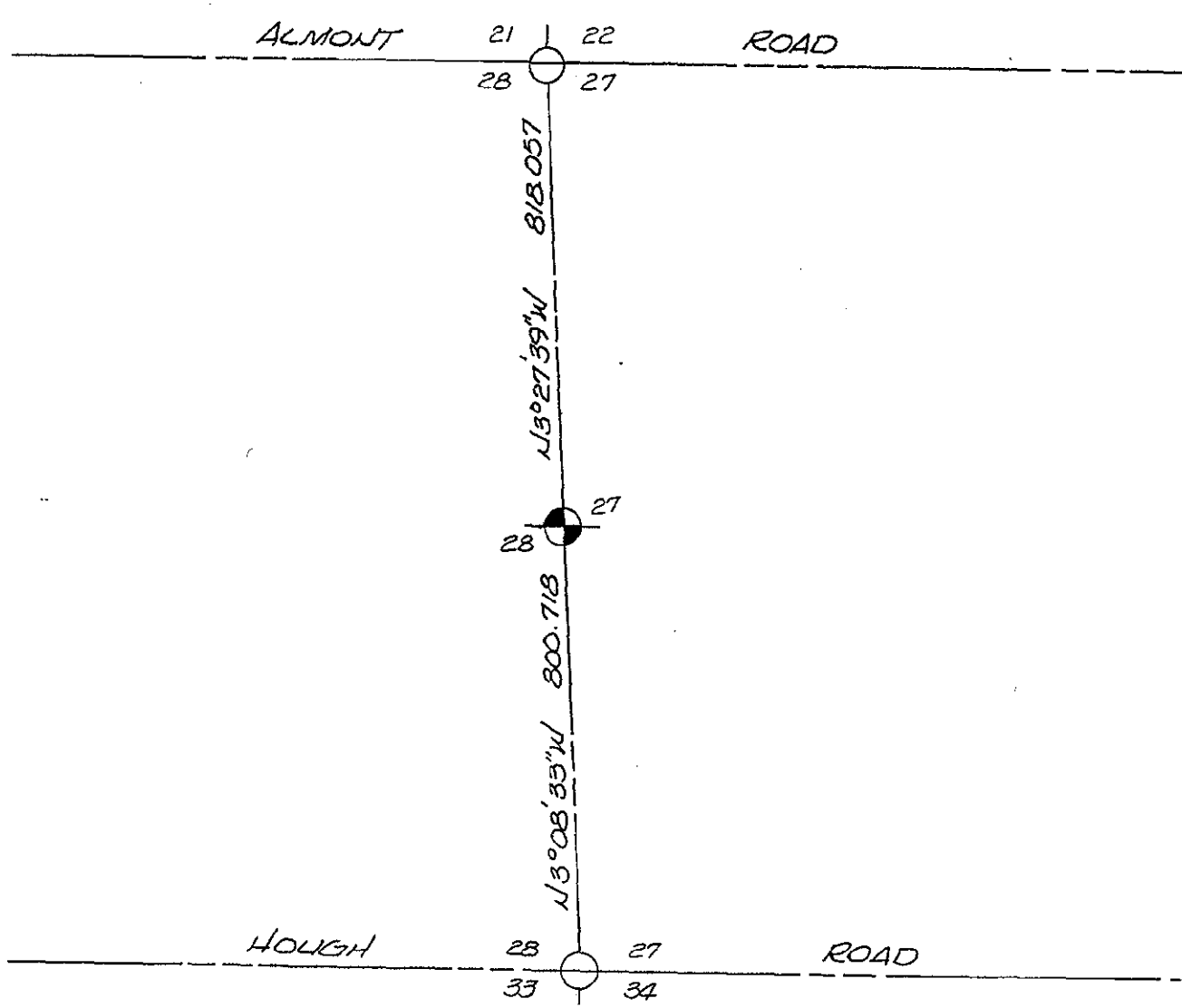
S87°E 23.075 (7.035 m) Nail and remon tag in power pole
S30°E 55.79 (17.005 m) Nail and remon tag in 24" Walnut
S24°W 50.93' (15.526 m) Nail and remon tag in 18" Maple
N75°W 28.93' (8.817 m) Nail and remon tag in power pole
South 13.40' (4.084 m) Found PK nail in pavement

Signed by *Norman C. Caldwell* Date 25 JUL 1995

Surveyor's Michigan License No. 12018



FORM APPROVED BY MICHIGAN BOARD OF LAND SURVEYORS, JUL 28, 1971
REVISED MAY 14, 1976
REVISED JAN, 1983
REVISED MARCH, 1983



MISC D 9.00
 REMLC PD075
 REMONT 2.00

PEER GROUP
 APPROVED LAND CORNER
 PA 345 OF 1990
 W. PEER COUNTY
 RAY DAVIS P.S. CO. SURVEYOR
 DATE APPROVED 7-20-95