

SURVEY & REMONUMENTATION

APR 28 1995

COMMISSION LAND CORNER RECORDATION CERTIFICATE
Filing Requirement of Act 74, Mich. P.A. 1970

REMONUMENTATION

For corners in <u>Lapeer</u> <small>(County)</small>	Located In:	Corner Code #
1. Public Land Survey	T 6N R 12E	G-11
	T _____ R _____	_____
	T _____ R _____	_____
	T _____ R _____	_____
2. Property Controlling in Section	S _____ T _____ R _____	_____
	S _____ T _____ R _____	_____
3. Miscellaneous Property in Sec.	S _____ T _____ R _____	_____
	S _____ T _____ R _____	_____
4. Lot No. _____, Recorded Plat _____		
5. Private Claims _____		

RECEIVED FOR RECORD

95 AUG -4 AM 11:28
 LIBER NO. 005 PAGE NO. 257
Melissa DeVaugh 258
 REGISTER OF DEEDS
 LAPEER COUNTY, MICHIGAN

Register of Deeds Stamp & File Number

I, Norman C. Caldwell, in a field survey on July 19 95, do hereby certify that under requirements of P.A. 74, Michigan P.A. of 1970, the corner points mentioned in lines 1 and 2 above were in conformance with regulations and rules therefore as required in the current manual of survey instructions of the United States Department of the Interior, Bureau of Land Management or by a decree of a Court of Law and/or that the corner points mentioned in lines 3, 4 and 5 above were in conformance with the rules of the Michigan Board of Land Surveyors or by a Decree of a Court of Law; established, re-established, monumented, re-monumented, recovered, found as expressed below:

	A	B	C	D	E	F	G	H	I	J	K	L	M
1													
2	6	5	4	3	2	1							
3													
4	7	8	9	10	11	12							
5													
6	18	17	16	15	14	13							
7													
8	19	20	21	22	23	24							
9													
10	30	29	28	27	26	25							
11													
12	31	32	33	34	35	36							
13													

NOTE: Not more than 4 corners, all in the same town and range, may be recorded on this certificate.

A. Description of original monument and accessories and/or subsequent restoration:

G-11 Post placed by J. Wampler 1818
 S80°W 9 lks (5.94') 6" Birch
 N65°E 14 lks (9.24') 7" Ash

Plat of "Albert Walz Subdivision" by John D. Lehner, P.S. 5787 recorded August 26, 1953 in L 1 of plats on P 98 used this position as the point of beginning.

LCRC by B. Henderson L.S. 16043 May 1, 1973 Recorded September 12, 1973 L 2 P 331 and surveys in L 3 P 932, L 2 P 269 also in Lapeer County Road Commission Records.
 Fnd 5/8" Rod in Monument Box
 S25°E 62.38' 18" Ash
 S45°W 53.54' Power pole
 N75°W 82.92' 12" Maple

Surveys by Earl Gravlin, P.S. 23510 in L 6 P 839 & 840 dated July 3, 1984
 Fnd 5/8" Iron in Monument Box
 WNW 82.92' 14" Maple
 SW 53.54' Power pole
 NNW 75.40' W end culvert
 NNE 74.78' E end culvert

Lapeer County Road Commission 1986 (no source)
 N45°E 49.0' Fnd 16d nail
 S35°E 46.6' Fnd 16d nail
 South 23.44 Fnd 16d nail

B. Description of corner evidence found and/or method applied in restoring or reestablishing corner:

G-11 Found record 5/8" bar in MDOT monument box. This position is not shown or referenced on the MDOT 1926 highway plans but likely was found during construction and the box installed in the concrete pavement. We raised to flush w/pavement by installing a riser and new cover. There is no apparent evidence of conflicting position.

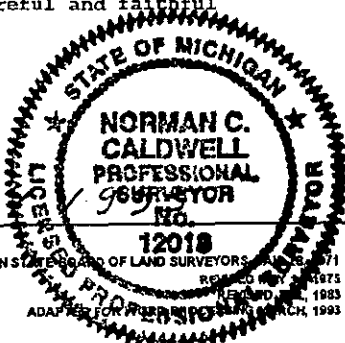
C. Description of monument for corner and accessories established to perpetuate locating the position of the corner:

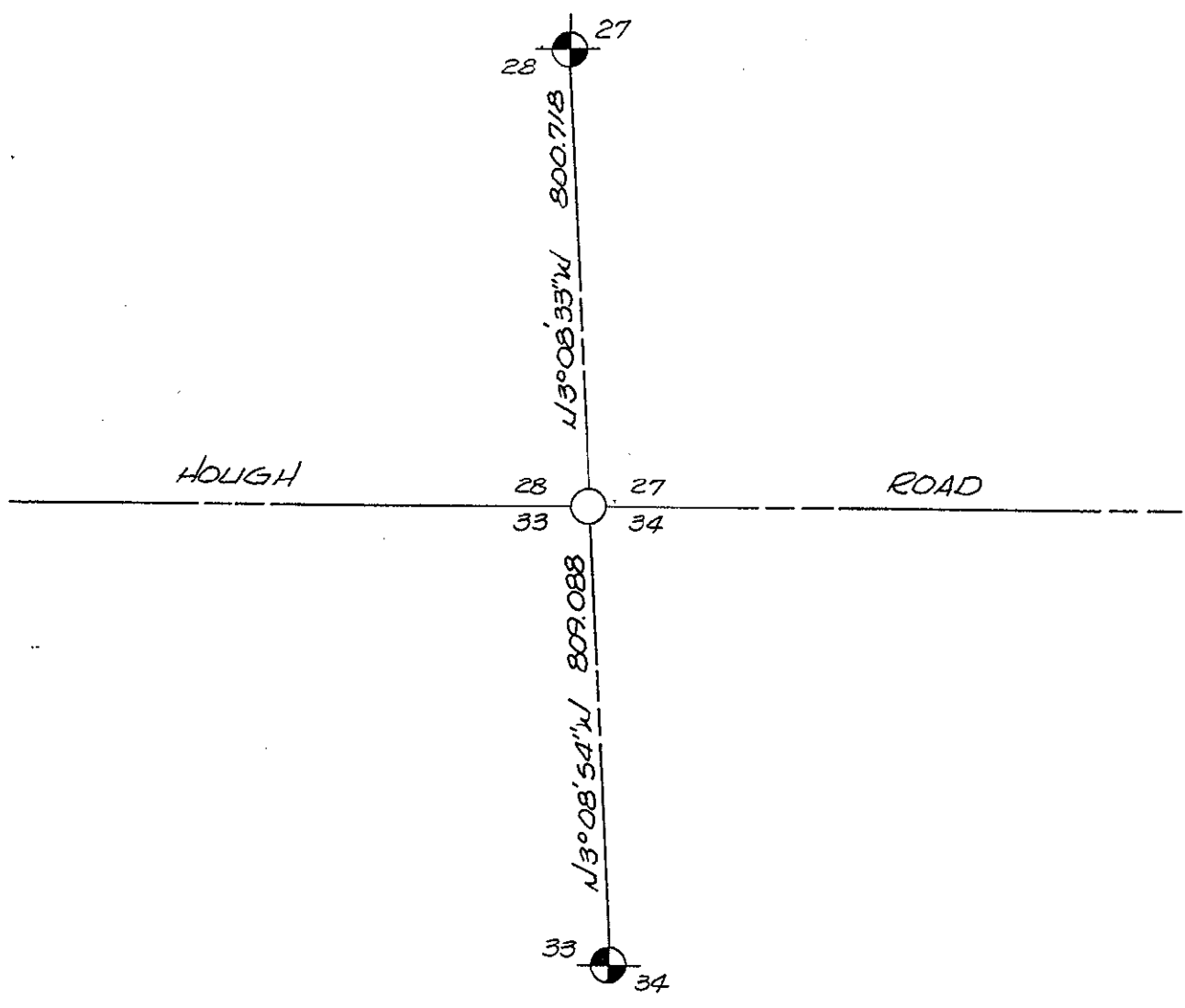
G-11 Section Corner 27, 28, 33, and 34, T6N-R12E

Found record 5/8" bar in MDOT monument box per LCRC in L 2 P 331 and surveys in L 2 P 269, L 3 P 932, L 6 P 839 & 840, and "Albert Walz Subdivision" L 1 of plats, P 98 and is accepted as a careful and faithful perpetuation of the position of the original corner.
 N60°E 63.48' (19.348 m) Nail and remon tag in power pole
 S57°E 43.36' (13.212 m) Nail and remon tag in power pole
 S57°W 53.20' (16.214 m) Nail and remon tag in power pole
 N62°W 71.13' (21.681 m) Nail and remon tag in power pole

Signed by *Norman C. Caldwell* Date 25 JUL 1995

Surveyor's Michigan License No. 12018





PEER GROUP
 APPROVED LAND CORNER
 PA 345 OF 1990
 LAPEER COUNTY

Ray D.

RAY DAVIS P.S. CO. SURVEYOR
 DATE APPROVED 7-20-95

MISC D 9.00
 REMILC F0075
 REMOINT 2.00