

**SURVEY & REMONUMENTATION**

APR 28 1996

**COMMISSION LAND CORNER RECORDATION CERTIFICATE**  
**Filing Requirement of Act 74, Mich. P.A. 1970**

**REMONUMENTATION**

For corners in Lapeer (County)	Located In:	Corner Code #
1. Public Land Survey	T 6N R 12E	G-12
	T R	
	T R	
	T R	
2. Property Controlling in Section	S T R	
	S T R	
3. Miscellaneous Property in Sec.	S T R	
	S T R	
4. Lot No. _____, Recorded Plat _____		
5. Private Claims _____		

RECEIVED FOR RECORD

95 AUG -4 AM 11:29

LIBER NO. 005 PAGE NO. 259  
*Melissa D. Vaughn*

REGISTER OF DEEDS  
 LAPEER COUNTY, MICHIGAN

Register of Deeds Stamp & File Number

I, Norman C. Caldwell, in a field survey on July 19 95, do hereby certify that under requirements of P.A. 74, Michigan P.A. of 1970, the corner points mentioned in lines 1 and 2 above were in conformance with regulations and rules therefore as required in the current manual of survey instructions of the United States Department of the Interior, Bureau of Land Management or by a decree of a Court of Law and/or that the corner points mentioned in lines 3, 4 and 5 above were in conformance with the rules of the Michigan Board of Land Surveyors or by a Decree of a Court of Law; established, re-established, monumented, re-monumented, recovered, found as expressed below:

NOTE: Not more than 4 corners, all in the same town and range, may be recorded on this certificate.

A. Description of original monument and accessories and/or subsequent restoration:

G-12 Post set by J. Wampler 1818 P 543  
 N78°W 7 lks (4.62') 6" Ash  
 N41°E 33 lks (21.78') 14" White Oak

Survey by Gilbert Bates May 31, 1871  
 Stone 26"x16"x8" w/small stones  
 S12°E 9 lks (5.94') 10" White Oak  
 N 6°E 61 lks (40.26') 14" White Oak

LCRC by Herbert J. Kobs L.S.14097 December 18, 1972 recorded March 12, 1973 L 2 P 111 and surveys in L 1 P 983, L 7 P 502, L 7 P 215, L 3 P 546, and L 5 P 899  
 Fnd PK Nail in Pavement  
 NW 125.99' Form nail & washer in Detroit Edison Pole  
 East 33.96' Form nail & washer in anchor post  
 SW 56.69' Form nail & washer in Detroit Edison pole

LCRC by B. Henderson L.S. 16043 November 16, 1976 recorded January 11, 1977  
 L 3 P 280 and survey in L 3 P 932  
 Set concrete nail in new asphalt surface w/witness ties from survey recorded in L 1 P 983, Lapeer County Records.  
 NW 125.99' Power pole  
 SW 56.69' Power pole

Survey by Earl Gravlin P.S. 23510 dated July 3, 1984 recorded in L 6 P 839  
 Fnd PK Nail  
 NNW 125.99' Power pole  
 ENE 31.89' E end culvert  
 NE 95.44' 10" Apple  
 WNW 33.07' W end culvert

B. Description of corner evidence found and/or method applied in restoring or reestablishing corner:

G-12 Found record PK nail in pavement per L 2 P 111, L 3 P 280, and surveys in L 1 P 983, L 6 P 840, L 7 P 502, and L 7 P 215. During excavation we found 2 additional PK Nails w/shiners at former pavement surfaces. This position agrees well with occupation and drain alignment East. There is no apparent evidence of conflicting position.

C. Description of monument for corner and accessories established to perpetuate locating the position of the corner:

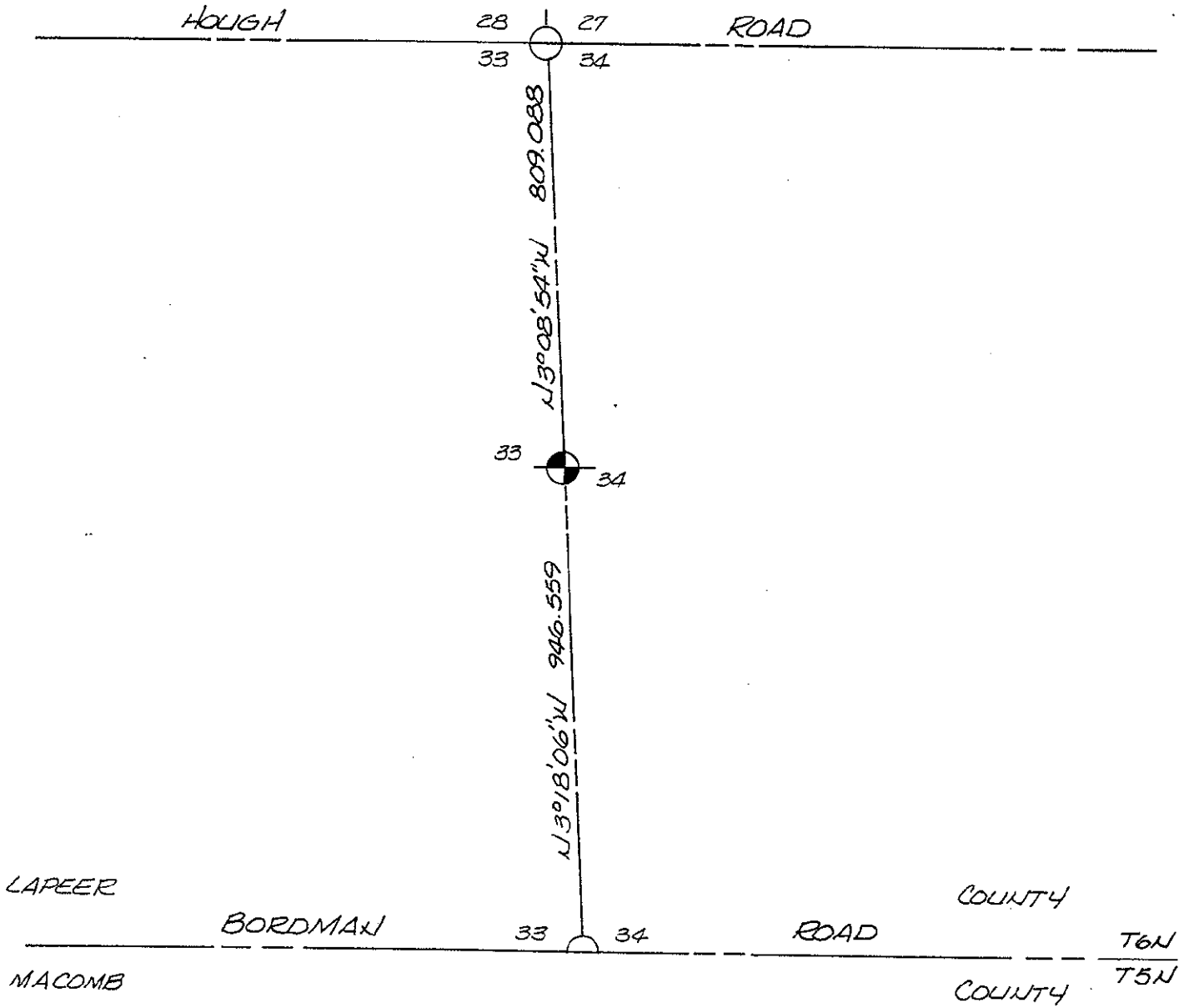
G-12 1/4 Corner Section 33 and 34, T6N-R12E

Found PK nails in pavement per LCRC's in L 2 P 111 and L 3 P 280 and surveys in L 1 P 983, L 6 P 840, L 7 P 502 and L 7 P 215. Placed 1/2" bar w/remon cap in monument box and is accepted as a careful and faithful perpetuation of the position of the original corner.  
 S10°W 208.96' (63.691 m) Nail and remon tag in W side power pole  
 S45°W 56.69' (17.279 m) Nail and remon tag in S side power pole  
 N20°W 125.91' (38.377 m) Nail and remon tag in W side power pole  
 N34°E 94.84' (28.907 m) Nail and remon tag in E side 12" Apple

Signed by *Norman C. Caldwell* Date 25 JUL 95  
 Surveyor's Michigan License No. 12018

	A	B	C	D	E	F	G	H	I	J	K	L	M
1													
2	6	5	4	3	2	1							
3													
4	7	6	9	10	11	12							
5													
6	18	17	16	15	14	13							
7													
8	19	20	21	22	23	24							
9													
10	30	29	28	27	26	25							
11													
12	31	32	33	34	35	36							
13													





MISC. D 9.00  
 RECALC. F0075  
 REHUNT 2.00

PEER GROUP  
 APPROVED LAND CORNER  
 PA 245 OF 1990  
 LAPEER COUNTY  
 RAY DAVIS P.S. CO. SURVEYOR  
 DATE 7/20/95 APPROVED