

**SURVEY &
REMONUMENTATION**

APR 29 1996

LAND CORNER RECORDATION CERTIFICATE

COMMISSION

Filing Requirement of Act 74, Mich. P.A. 1970

RECEIVED FOR RECORD

For corners in <u>Lapeer</u> <small>(County)</small>	Located In:	REMONUMENTATION Corner Code #
1. Public Land Survey	T 6N R 12E	G-13
	T _____ R _____	_____
	T _____ R _____	_____
	T _____ R _____	_____
2. Property Controlling in Section	S _____ T _____ R _____	_____
	S _____ T _____ R _____	_____
3. Miscellaneous Property in Sec.	S _____ T _____ R _____	_____
	S _____ T _____ R _____	_____

95 AUG -4 AM 11:30
LIBER NO. 105 PAGE NO. 261
Melissa DeVaugh 262
REGISTER OF DEEDS
LAPEER COUNTY, MICHIGAN

Register of Deeds Stamp & File Number

4. Lot No. _____, Recorded Plat _____
5. Private Claims _____

	A	B	C	D	E	F	G	H	I	J	K	L	M
1													
2	6	5	4	3	2	1							
3													
4	7	8	9	10	11	12							
5													
6	18	17	16	15	14	13							
7													
8	19	20	21	22	23	24							
9													
10	30	29	28	27	26	25							
11													
12	31	32	33	34	35	36							
13													

I, Norman C. Caldwell, in a field survey on July 19 95, do hereby certify that under requirements of P.A. 74, Michigan P.A. of 1970, the corner points mentioned in lines 1 and 2 above were in conformance with regulations and rules therefore as required in the current manual of survey instructions of the United States Department of the Interior, Bureau of Land Management or by a decree of a Court of Law and/or that the corner points mentioned in lines 3, 4 and 5 above were in conformance with the rules of the Michigan Board of Land Surveyors or by a Decree of a Court of Law; established, re-established, monumented, re-monumented, recovered, found as expressed below:

NOTE: Not more than 4 corners, all in the same town and range, may be recorded on this certificate.

A. Description of original monument and accessories and/or subsequent restoration:

G-13 Post set by Joseph Wampler 1818
N6°W 190 lks (125.4') 36" White oak

MDOT plans dated November 1943 position marked by a monument box.
S40°E 62.88' power pole
S50°W 51.43' telephone pole
N58°W 61.63' 18" Hickory

LCRC by H.J. Kobs L.S. 14097 December 18, 1972 recorded March 12, 1973 L 2 P 113 and surveys in L 5 P 899, L 1 P 983, L 7 P 502, and L 7 P 215
SW 57.36' Form nail and washer in 8" Ash
NW 63.73' Form nail and cap 5787 in 24" Ash
SE 60.50' Form nail and cap in Detroit Edison pole
East 216.20' Closing Corner Sections 3 and 4, T5N-R12E, Macomb County

LCRC by Bernard Henderson L.S. 16043 November 16, 1976 recorded January 11, 1977 L 3 P 280 and survey dated November 16, 1976 recorded in L 3 P 932.
Fnd Boat Spike
Northwest 63.73' 24" Ash
Southeast 60.50' power pole
Southwest 54.54' 8" Ash



B. Description of corner evidence found and/or method applied in restoring or reestablishing corner:

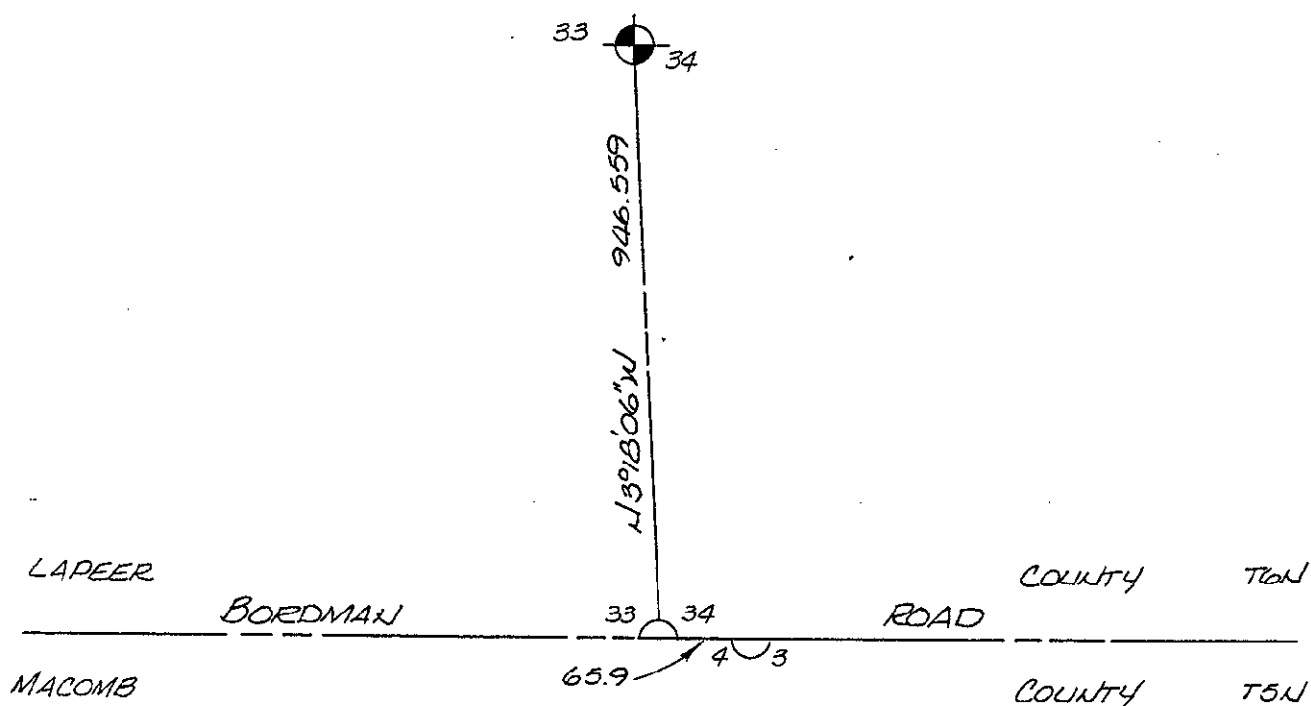
G-13 Found record boat spike per LCRC's in L 2 P 113 and L 3 P 280 and surveys in L 1 P 983, L 3 P 932, L 5 P 899, L 7 P 502, and L 7 P 215. Replaced boat spike w/ 1/2" rebar and Lapeer County Remonumentation cap. The intersection has been lowered and pavement removed, thus box is gone. Boat spikes are typical of MDOT survey points. There is no apparent evidence of a conflicting position.

C. Description of monument for corner and accessories established to perpetuate locating the position of the corner:

G-13 Standard Section Corner 33 and 34, T6N-R12E

Found record boat spike per LCRC in L 2 P 113 and L 3 P 280 and surveys in L 1 P 983, L 3 P 932, L 5 P 899, L 7 P 502, and L 7 P 215. Replaced boat spike w/ 1/2" rebar and Lapeer County Remonumentation cap and is accepted as the best available evidence of the position of the original corner.
N13°E 118.44' (36.099 m) Nail and remon tag in power pole
S45°E 60.46' (18.427 m) Nail and remon tag in power pole
S50°W 54.69' (16.673 m) Nail and remon tag in 12" Ash
N58°W 63.55' (19.371 m) Nail and remon tag in 24" Ash

Signed by *Norman C. Caldwell* Date 25 JULY 1995
Surveyor's Michigan License No. 12018



PEER GROUP
APPROVED LAND CORNER
PA 345 OF 1990
LAPEER COUNTY

Ray Davis
RAY DAVIS P.S. CO. SURVEYOR
DATE 7-20-95 APPROVED

MISC. D 9.00
REPLIC. F0075
REPOINT 2.00