

1993

COMMISSION

REMONUMENTATION LAND CORNER RECORDATION CERTIFICATE

Filing Requirement of Act 74, Mich. P.A. 1970

RECEIVED FOR RECORD

For corners in

LAPEER (County)

Located In:

Corner Code ##

- 1. Public Land Survey T 9 N R 9 E M-12
2. Property Controlling in Section S T R
3. Miscellaneous Property in Sec. S T R
4. Lot No. , Recorded Plat
5. Private Claims

94 JAN -6 PM 12:51 LIBER 005 PAGE 59

Register of Deeds Stamp & File Number

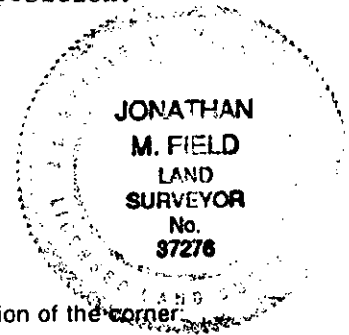
I, Jonathan M. Field, in a field survey on October 19 93 do hereby certify that under requirements of P.A. 74, Michigan P.A. of 1970, the corner points mentioned in lines 1 and 2 above were in conformance with regulations and rules therefore as required in the current manual of survey instructions of the United States Department of the Interior, Bureau of Land Management or by a decree of a Court of Law and/or that the corner points mentioned in lines 3, 4 and 5 above were in conformance with the rules of the Michigan Board of Land Surveyors or by a Decree of a Court of Law; established, re-established, monumented, re-monumented, recovered, found as expressed below:

NOTE: Not more than 4 corners, all in the same town and range, may be recorded on this certificate.

Grid table with columns A-L and rows 2-13. Cell 12,36 contains a black dot.

A. Description of original monument and accessories and/or subsequent restoration: 1822 GLO- Wampler, D.S.; Set 1/2 mile post; Sugar 9" N78 1/2 W 60lks., W.Oak 30" S45W 49lks. 1977 Bates, P.S.#16699; Survey L.084, Pg.408 - no object stated; N. 18.24' to A-13,T9N-R10E 1978 Bates, P.S.#16699; Survey L.004, Pg.474 - no object stated; same 3 wits as 1977 survey 1978 Bates, P.S.#16699; LCRC L.3,Pg.380 - set 1/2" rod half way between M-11 & M-13; same wits 1992 Bilow, P.S.#26453; LCRC L.4,Pg.403 - fnd Bates corner 15.68' N. of midpoint - set MDNR mon

B. Description of corner evidence found and/or method applied in restoring or reestablishing corner: 1993 Rowe Eng.- Field, P.S.#37276; Fnd. 4" conc. monument w/ aluminum M.D.N.R. cap at fence intersection, fences running N-S-W Fnd. 5 previous wits which verify that M.D.N.R. mon. is in same position as 1992 LCRC Accepted M.D.N.R. monument as best evidence of original corner position.



C. Description of monument for corner and accessories established to perpetuate locating the position of the corner: M-12 4" conc. monument w/ aluminum M.D.N.R. cap North, 15.64' Fnd. 1/2" rod w/cap #18986 in N-S fence North, 23.84' Fnd. 4" conc. mon. w/ M.D.N.R. cap North, 33.84' Fnd. 1/2" rod in N-S fence N44°E, 21.25' Set nail w/remon tag above fnd. nail w/M.D.N.R. tag in NW face 8" Poplar S28°E, 17.84' Set nail w/remon tag above fnd. nail w/M.D.N.R. tag in E. face 10" Poplar S79°W, 30.48' Set nail w/remon tag in N. face twin 12" Maple N26°W, 40.34' Set nail w/remon tag above fnd. nail w/M.D.N.R. tag in SW face 14" Oak N02°E, 17.81' Set nail w/remon tag above fnd. nail w/M.D.N.R. tag in W. face 6" Poplar S46°W, 20.35' Set nail w/remon tag in E. face 16" Maple S46°W, 20.70' Fnd. nail w/M.D.N.R. tag in SE face 16" Maple

Signed by Jonathan M Field Date 11-24-93 Surveyor's Michigan License No. 37276