

SURVEY &
REMONUMENTATION

1993

COMMISSION

REMONUMENTATION
LAND CORNER RECORDATION CERTIFICATE
Filing Requirement of Act 74, Mich. P.A. 1970

For corners in

<u>LAPEER</u> (County)	Located In:	Corner Code #
1. Public Land Survey	T <u>ION</u> R <u>10E</u>	<u>M-12</u>
	T _____ R _____	_____
	T _____ R _____	_____
	T _____ R _____	_____
2. Property Controlling in Section	S _____ T _____ R _____	_____
	S _____ T _____ R _____	_____
3. Miscellaneous Property in Sec.	S _____ T _____ R _____	_____
	S _____ T _____ R _____	_____
4. Lot No. _____, Recorded Plat _____		
5. Private Claims _____		

RECEIVED FOR RECORD
24 JAN - 6 PM 1:00
LIBER 005 FILE NO. 70
Michigan Files
RECORDS & FILE NO.
LAPEER MICHIGAN

Register of Deeds Stamp & File Number

	A	B	C	D	E	F	G	H	I	J	K	L	M
2	6	5	4	3	2	1							
3													
4	7	8	9	10	11	12							
5													
6	13	17	16	15	14	13							
7													
8	19	20	21	22	23	24							
9													
10	30	29	28	27	26	25							
11													
12	31	32	33	34	35	36							
13													

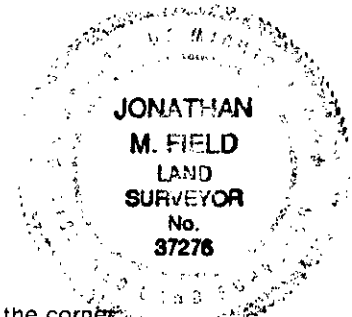
I, Jonathan M. Field, in a field survey on October, 1993, do hereby certify that under requirements of P.A. 74, Michigan P.A. of 1970, the corner points mentioned in lines 1 and 2 above were in conformance with regulations and rules therefore as required in the current manual of survey instructions of the United States Department of the Interior, Bureau of Land Management or by a decree of a Court of Law and/or that the corner points mentioned in lines 3, 4 and 5 above were in conformance with the rules of the Michigan Board of Land Surveyors or by a Decree of a Court of Law; established, re-established, monumented, re-monumented, recovered, found as expressed below:

NOTE: Not more than 4 corners, all in the same town and range, may be recorded on this certificate.

A. Description of original monument and accessories and/or subsequent restoration:
1833 GLO- Parke, D.S. ; Set 1/2 mile post; W.Ash 9" N55W 11 lks., W.Ash 5" S66W 10 1/2 lks.
(post on N. bank of stream)

B. Description of corner evidence found and/or method applied in restoring or reestablishing corner:
1993 Rowe Eng. - Field, P.S.#37276; Fnd. fence lines running N.,E.,&W. on N. bank of creek
(intersection of fencelines falls 6' +/- into creek, N. bank eroded)

Accepted fenceline intersection as best evidence of original corner location



C. Description of monument for corner and accessories established to perpetuate locating the position of the corner:
Set REFERENCE MONUMENT (1/2" rod w/ standard brass cap) 21.0' N. of corner M-12 (not on E. township line)
Set REFERENCE MONUMENT (1/2" rod w/ standard brass cap) 45.1' W. of corner M-12 (not on E-W 1/2 line)

- | | |
|---|---|
| S80°E, 19.06' Set nail w/remontag 18" Oak | S45°W, 38.77' Set nail w/remontag 24" Maple |
| N40°E, 19.59' Set nail w/remontag 18" Oak | N85°W, 30.79' Set nail w/remontag 6" Maple |
| N35°W, 26.14' Set nail w/remontag 18" Maple | N26°W, 26.49' Set nail w/remontag 10" Maple |
| N70°W, 33.54' Set nail w/remontag 12" Maple | N30°E, 11.85' Set nail w/remontag 8" Beech |
| S85°W, 32.59' Set nail w/remontag 8" Beech | |

Signed by Jonathan M. Field Date 11-24-93
Surveyor's Michigan License No. 37276