

MAR 15 2000

LAND CORNER RECORDATION CERTIFICATE
Filing Requirement of Act 74, Mich. P.A. 1970

For corners in SECTION

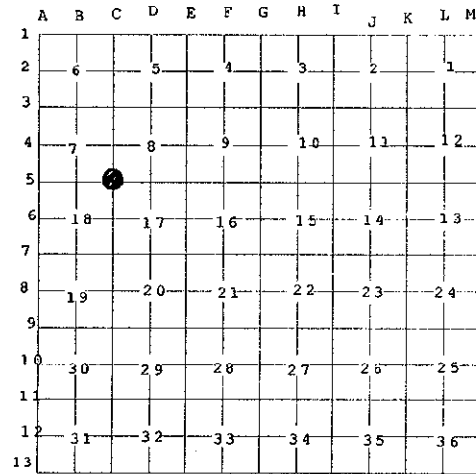
Leelanau (County)	Located In:	Corner Code #
1. Public Land Survey	T 31N R 11W	C-5 (Leelanau)
	T R	
	T R	
	T R	
2. Property Controlling in Section	S T R	
	S T R	
3. Miscellaneous Property in Sec.	S T R	
	S T R	

Barbara Kirt 12/29/99
 Leelanau Reg of Deeds 4:12 pm
 BJK Fee: 9.00
 04500002 P0352 Page 1 of 1

#655

Register of Deeds Stamp & File Number

4. Lot No. _____, Recorded Plat _____
 5. Private Claims _____



I, David T. Rowe, in a field survey on November 30, 1999 do hereby state that under requirements of P.A. 74, Michigan P.A. of 1970, the corner points mentioned in lines 1 and 2 above were in conformance with regulations and rules therefore as required in the current manual of survey instructions of the United States Department of the Interior, Bureau of Land Management or by a decree of a Court of Law and /or that the corner points mentioned in lines 3, 4 and 5 above were in conformance with the rules of the Michigan Board of Land Surveyors or by a Decree of a Court of Law; established, re-established, monumented, recovered, found as expressed below:

NOTE: Not more than 2 corners, all in the same town and range, may be recorded on this certificate.

A. Description of original monument and accessories and/or subsequent restoration:

C-5: Corner Common to Sections 7, 8, 17 and 18:

G.L.O. Notes: 1851 Set Post. 14" Hemlock N27°E 17 lks., 16" Beech S52°W 9 lks.

County Records: 1937 H. Brehmer, Fence Corner. Fences South, Northeasterly, East and West. No trees near.

1994 N. Livasy, Iron found, 6" Maple S15°E 3.95', 6" Apple S25°W 13.6'.

1996 N. O'Non, Fd. 1/2" iron pipe. 12" Ash S45°E 4.00', 8" Birch S28°E 60.84', 12" Apple S27°W 13.60'.

B. Description of corner evidence found and/or method applied in restoring or reestablishing corner:

C-5: Corner Common to Sections 7, 8, 17 and 18:

Fd. 3/4" x 24" iron pipe. Old fallen fence to South, East and West.

APPROVED LAND CORNER
 P.A. 345 OF 1990
 LEELANAU COUNTY

DATE: 11-30-99

COUNTY REP. D.M. ON

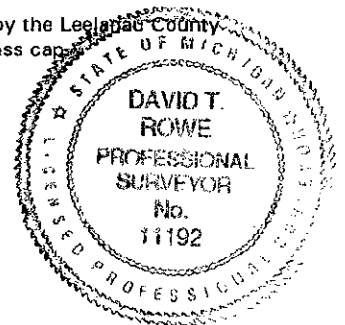
C. Description of monument for corner and accessories established to perpetuate locating the position of the corner:

C-5: Corner Common to Sections 7, 8, 17 and 18:

Found 3/4" iron pipe accepted as a careful and faithful re-establishment of the position of the original corner by the Leelanau County Peer Group, November 30, 1999 and replaced with 3/4" i.d. galvanized 36" long iron pipe with a stamped brass cap.

Witnesses:

- S51°E 4.05' Set Nail SW. Face 12" Ash
- S35°E 60.98' Fd. Spike SW. Face 10" W. Birch
- S25°W 13.58' Fd. Nail SE. Face 12 Apple
- S63°W 47.84' Fd. Spike NW. Face 14" Maple



Signed by David T. Rowe
 Surveyor's Michigan License No. 11192

Date Dec 22, 1999