

MAR 15 2000

SECTION

LAND CORNER RECORDATION CERTIFICATE
Filing Requirement of Act 74, Mich. P.A. 1970

For corners in

Leelanau (County)	Located In:	Corner Code #
1. Public Land Survey	T 31N R 11W	E-4(Leelanau)
	T R	
	T R	
	T R	
2. Property Controlling in Section	S T R	
	S T R	
3. Miscellaneous Property in Sec.	S T R	
	S T R	

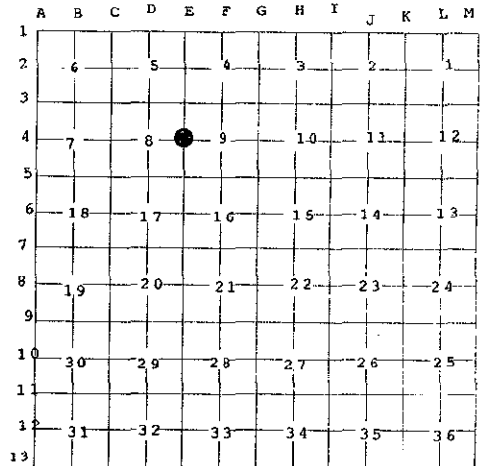
Barbara Kirt 12/29/99
Leelanau Reg of Deeds 4:12 pm
BJK Fee: 9.00
04800002 P0353 Page 1 of 1

#656

Register of Deeds Stamp & File Number

4. Lot No. _____, Recorded Plat _____

5. Private Claims _____



I, David T. Rowe, in a field survey on November 30, 1999 do hereby state that under requirements of P.A. 74, Michigan P.A. of 1970, the corner points mentioned in lines 1 and 2 above were in conformance with regulations and rules therefore as required in the current manual of survey instructions of the United States Department of the Interior, Bureau of Land Management or by a decree of a Court of Law and for that the corner points mentioned in lines 3, 4 and 5 above were in conformance with the rules of the Michigan Board of Land Surveyors or by a Decree of a Court of Law; established, re-established, monumented, recovered, found as expressed below:

NOTE: Not more than 2 corners, all in the same town and range, may be recorded on this certificate.

A. Description of original monument and accessories and/or subsequent restoration:

- E-4: 1/4 Corner Common to Sections 8 and 9:
G.L.O. Notes: 1851 Set 1/4 Post. 12" Sugar N16°W 25 lks., 6" Sugar S1°E 31 lks.
- County Records: 1886 W.O. Greene, Fd. one old witness. Added new one. 12" Beech S75°E 5 rods 22.5 lks.
- 1930's H. Brehmer, Surveyors Book 3, Page 132, No corner in. Should be 17.7' N. of Nail in E. Face of Corner Post
- 1993 N. O'Non, Fd. 5/8" Iron Pipe. 4" Maple N02°E 20.99', 7" Ash West 17.50', 12" Ash in Clump S04°W 66.12', 6" Ash N84°E 76.23'.
- 1994 N. O'Non, Same.
- 1996 N. O'Non, Same.

B. Description of corner evidence found and/or method applied in restoring or reestablishing corner:

- E-4: 1/4 Corner Common to Sections 8 and 9:
Fd. 5/8" x 18" Iron Pipe. Old Fenceline to North and South.

APPROVED LAND CORNER
P.A. 345 OF 1990
LEELANAU COUNTY
DATE 11-30-99
COUNTY REP. N. O'Non

C. Description of monument for corner and accessories established to perpetuate locating the position of the corner:

- C-4: 1/4 Corner Common to Sections 8 and 9:
Found 5/8" iron pipe accepted as a careful and faithful re-establishment of the position of the original corner by the Leelanau County Peer Group, November 30, 1999 and replaced with 3/4" i.d. galvanized 36" long iron pipe with a stamped brass cap.

- Witnesses:
- North 21.03' Fd. Nail E. Face 8" Maple
 - N85°E 76.39' Set Nail N. Face 8" Ash
 - S68°E 55.56' Set Nail S. Face Twin 6" Apple
 - S07°W 19.5' Old Fence Post
 - West 17.80' Set Nail S. Face 10" Ash



Signed by David T. Rowe
Surveyor's Michigan License No. 11192

Date Dec 22, 1999