

MAR 15 2000

SECTION

LAND CORNER RECORDATION CERTIFICATE
Filing Requirement of Act 74, Mich. P.A. 1970

For corners in

Table with columns: Leelanau (County), Located In, Corner Code #. Rows include Public Land Survey, Property Controlling in Section, and Miscellaneous Property in Sec.

Barbara Kirt 12/29/99
Leelanau Rec of Deeds 4:09 pm
BJK Fee: 9.00
04B00002 P0342 Page 1 of 1

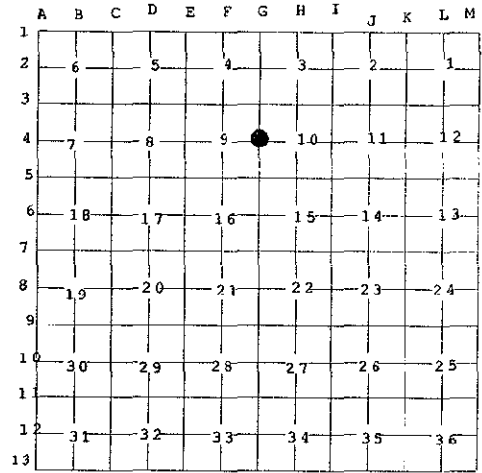
#645

Register of Deeds Stamp & File Number

4. Lot No. , Recorded Plat
5. Private Claims

I, David T. Rowe, in a field survey on November 30, 1999 do hereby state that under requirements of P.A. 74, Michigan P.A. of 1970, the corner points mentioned in lines 1 and 2 above were in conformance with regulations and rules therefore as required in the current manual of survey instructions of the United States Department of the Interior, Bureau of Land Management or by a decree of a Court of Law and/or that the corner points mentioned in lines 3, 4 and 5 above were in conformance with the rules of the Michigan Board of Land Surveyors or by a Decree of a Court of Law; established, re-established, monumented, recovered, found as expressed below:

NOTE: Not more than 2 corners, all in the same town and range, may be recorded on this certificate.



A. Description of original monument and accessories and/or subsequent restoration:

G-4: 1/4 Corner Common to Sections 9 and 10:

G.L.O. Notes: 1851 Set Post 1/4 Section Corner. 8" Sugar N73°W 6 lks., 14" Beech S76°E 11 lks.

County Records: 1984 G. DeLaMater, Iron found.

1990 J. Korr, Fd. Re-bar with Cap # 10681. 10" J. Pine N46°E 50.72', P. Pole S75°E 140.90', 8" Ash S15°W 24.72', 6" Cherry (no nail) S70°W 33.13'

1993 N. O'Non, Fd. Concrete Monument with Cap # 24600. 12" Pine N47°E 50.67', 4" Maple S20°W 24.71', 14" Pine N83°E 90.18', P. Pole S72°E 140.92'.

B. Description of corner evidence found and/or method applied in restoring or reestablishing corner:

G-4: 1/4 Corner Common to Sections 9 and 10:

Fd. Concrete Monument with Cap # 24600, 20' N. of Powerline.

APPROVED LAND CORNER
P.A. 345 OF 1990
LEELANAU COUNTY

DATE: 11-30-99

COUNTY REP. [Signature]

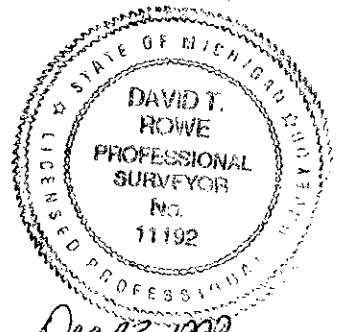
C. Description of monument for corner and accessories established to perpetuate locating the position of the corner:

G-4: 1/4 Corner Common to Sections 9 and 10:

Found Concrete Monument accepted as a careful and faithful re-establishment of the position of the original corner by the Leelanau County Peer Group, November 30, 1999 and replaced with 3/4" i.d. galvanized 36" long iron pipe with a stamped brass cap.

Witnesses:

- N45°E 50.65' Fd. Nail in NW. Face 12" R. Pine
N58°E 56.07' Set Nail SE. Face 12" Maple
S75°E 140.92' Fd. D.H. Nail and Washer S. Face P. Pole
N67°W 32.20' Fd. Mag. Nail S. Face 10" Cherry
N80°E 90.16' Fd. Nail NW. Face 14" R. Pine



Signed by [Signature]

Date Dec 22, 1999

Surveyor's Michigan License No. 11192