

MAR 15 2000

LAND CORNER RECORDATION CERTIFICATE
Filing Requirement of Act 74, Mich. P.A. 1970

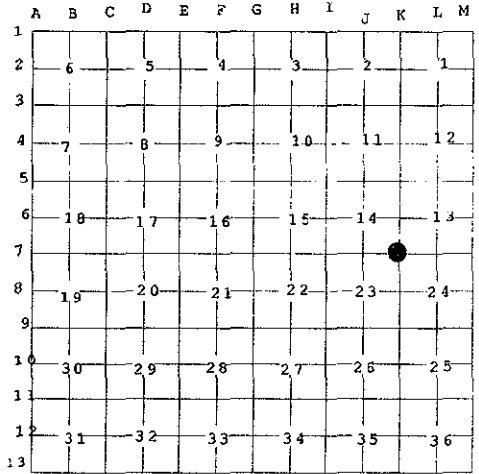
SECTION

For corners in

Leelanau (County)	Located In:	Corner Code #
1. Public Land Survey	T 32N R 11W	K-7 (Leelanau)
	T R	
	T R	
	T R	
2. Property Controlling in Section	S T R	
	S T R	
3. Miscellaneous Property in Sec.	S T R	
	S T R	

Barbara Kirt 12/29/99
 Leelanau Reg of Deeds 4:09 pm
 BJK Feet 9.00
 04800002 P0344 Page 1 of 1
 #647
Register of Deeds Stamp & File Number

4. Lot No. _____, Recorded Plat _____
 5. Private Claims _____



I, David T. Rowe, in a field survey on December 8, 1999 do hereby state that under requirements of P.A. 74, Michigan P.A. of 1970, the corner points mentioned in lines 1 and 2 above were in conformance with regulations and rules therefore as required in the current manual of survey instructions of the United States Department of the Interior, Bureau of Land Management or by a decree of a Court of Law and /or that the corner points mentioned in lines 3, 4 and 5 above were in conformance with the rules of the Michigan Board of Land Surveyors or by a Decree of a Court of Law; established, re-established, monumented, recovered, found as expressed below:

NOTE: Not more than 2 corners, all in the same town and range, may be recorded on this certificate.

A. Description of original monument and accessories and/or subsequent restoration:

- K-7: Corner Common to Sections 13, 14, 23 and 24:
 G.L.O. Notes: 1851 Set Post. 8" Beech N40°W 15 lks., 15" Hemlock S40°E 31 lks. On west side of hill.
- County Records: 1934 H. Brehmer Survey Book 3, Square concrete monument. Gov't. witness 8" Beech (now 15"), N40°W 15 lks. (now 9.8'). New witness 10" Oak S5°W 18.7'. Fencelines N., S. and E.
- 1972 P. O'Non, Fd. Old concrete monument (Greene)
- 1993 R.M. Harris, Concrete Post Found.

APPROVED LAND CORNER
P.A. 345 OF 1990
LEELANAU COUNTY
 DATE: 12-14-99
 COUNTY REP. D. T. Rowe

B. Description of corner evidence found and/or method applied in restoring or reestablishing corner:

- K-7: Corner Common to Sections 13, 14, 23 and 24:
 Fd. 5" x 6" Square Concrete Monument with an old spike in centerline and 1" from the E. end on W. side of hill. Old Fencelines N., S. and E. N45°W 10.6' to center of decayed 18" Beech Stump (Original Government Witness)

C. Description of monument for corner and accessories established to perpetuate locating the position of the corner:

- K-7: Corner Common to Sections 13, 14, 23 and 24:
 Found Square Concrete Monument accepted as a careful and faithful re-establishment of the position of the original corner by the Leelanau County Peer Group, December 14, 1999.

- Witnesses:
- S10°W 19.09' Set Nail E. Face of Fd. Blazed 22" Oak
 - N17°E 17.44' Set Nail E. Face of Fd. Blazed 8" Hemlock
 - N50°W 8.74' Set Nail NE. Face 6" Beech
 - S80°E 2.43' Set Nail in N. Root of 16" Hemlock



Signed by David T. Rowe
 Surveyor's Michigan License No. 11192

Date Dec 22, 1999