

LAND CORNER RECORDATION CERTIFICATE
Filing Requirement of Act 74, Mich. P.A. 1970

For corners in

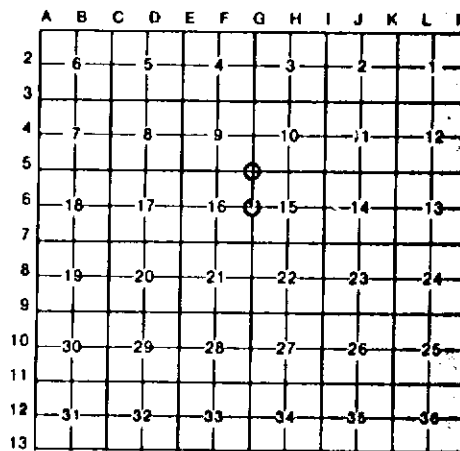
LEELANAU (County)	Located In:	Corner Code //
1. Public Land Survey	T 34N R 13W	G-5
	T R	G-6
	T R	
	T R	
2. Property Controlling in Section	S T R	
	S T R	
3. Miscellaneous Property in Sec.	S T R	
	S T R	

Register of Deeds Stamp & File Number

4. Lot No. _____, Recorded Plat _____
 5. Private Claims _____

I, CARL E. ROSER, in a field survey on OCTOBER 17, 19 86, do hereby certify that under requirements of P.A. 74, Michigan P.A. of 1970, the corner points mentioned in lines 1 and 2 above were in conformance with regulations and rules therefore as required in the current manual of survey instructions of the United States Department of the Interior, Bureau of Land Management or by a decree of a Court of Law and/or that the corner points mentioned in lines 3, 4 and 5 above were in conformance with the rules of the Michigan Board of Land Surveyors or by a Decree of a Court of Law, established, re-established, monumented, re-monumented, recovered, found as expressed below.

NOTE: Not more than 4 corners, all in the same town and range, may be recorded on this certificate.



A. Description of original monument and accessories and/or subsequent restoration:



B. Description of corner evidence found and/or method applied in restoring or reestablishing corner:

G-5 RE-ESTAB'D SE COR OF S-9 AT RECORD U.S.(G.L.O.) DISTANCE (3468.25') EAST of REFERENCE U.S.M.C. ON S LINE OF S-9 & AT PRORATED DISTANCE N & S TO U.S.(G.L.O.) BETW N LINE SEC 4 (CALC POSITION FOR NE S-4 IN LAKE) & RECOVERED E 1/4 COR S-16 (GOOD ORIGINAL COR). COR RESTORED BY THIS METHOD FITS U.S.(G.L.O.) TIE S TO "FOOT OF N END OF A RIDGE BEARING SW" EXACTLY (737'± MEA-726' U.S. TO NEAREST CHAIN) & U.S.(G.L.O.) TIE E TO LK MICH. (400'± MEA-407' U.S.); NOTE PRESENT L MICH LEVEL IS 2 FT ABOVE ORIG. HIGH WATER MARK. CTR N-S TRAIL IS E 19 1/2'±. OLD E-W B/WIRE FN ON CED POSTS IS 82'± S.

G-6 FD 1 1/4" PIPE THAT FITS 1970 (OR EARLIER) N.B.T'S BY RLS, HAROLD BRUNING. ALSO FITS PROBABLE ORIG 1847 U.S.B.T. (SUG TREE 8, S48°W, 15 LKS.) KEITH CHAPPEL SHOWED US (ROSER, O'HARA, WESTBROOK) THIS PIPE THUR EVENING OCT. 9, 1986 & SAID THAT OLD, LG MAPLE USED TO BE STANDING (NOW HAS TOP BLOWN OUT & DOWN) & STATED THAT MAPLE STUMP WAS BELIEVED TO BE ORIG U.S.B.T. TOE OF STEEP SLOPE IS W 54'±, EDGE VEGETATION IS E 50'±. EDGE WATER IS E 210'±. SET BOTTOM OF OLD CLAY JUG ALONGSIDE PIPE. FD 6" SQ (1 1/2'± LONG) CONC. MON W/ ~~US~~ CARVED ON TOP IS N34°E 13.8'

C. Description of monument for corner and accessories established to perpetuate locating the position of the corner:

G-5			G-6		
DROVE 1" X 45" PIPE W/RLS CAP & SET CED POST W/ LOC TAG.			FD 1 1/4" PIPE & SET CED POST W/LOC TAG.		
16" MAPLE	N30°W	10.9'	:: 22" MAPLE	N28°W	20.8'
8" MAPLE	N44°E	55.7'	:: 12" ASH	N30°E	66.5'
30" TW MAPLE	S43°E	72.5'	13" MAPLE	S30°E	24.6'
14" MAPLE	S88°W	28.2'	::: 37" MAP STP	S46°W	8.9'
			17" MAPLE	S84°W	25.7'

:: H. BRUNING WITS
 :::OBT (5' HIGH STP-DECAYED W/TOP ON GROUND)

Signed by Carl F. Roser 12-29-86 Date

Surveyor's Michigan License No. 12028