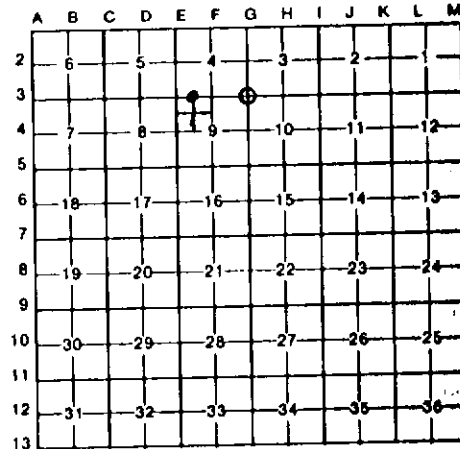


LAND CORNER RECORDATION CERTIFICATE
Filing Requirement of Act 74, Mich. P.A. 1970

For corners in

LEELANAU <small>(County)</small>	Located In:	Corner Code <i>77</i>
1. Public Land Survey	T 34N R 13W	G-3
	T _____ R _____	
	T _____ R _____	
	T _____ R _____	
2. Property Controlling in Section	S 9 T 34N R 13W	1
	S _____ T _____ R _____	
3. Miscellaneous Property in Sec.	S _____ T _____ R _____	
	S _____ T _____ R _____	
4. Lot No. _____, Recorded Plat _____		
5. Private Claims _____		

Register of Deeds Stamp & File Number



I, CARL F. ROSER, in a field survey on OCTOBER 17, 19 86, do hereby certify that under requirements of P.A. 74, Michigan P.A. of 1970, the corner points mentioned in lines 1 and 2 above were in conformance with regulations and rules therefore as required in the current manual of survey instructions of the United States Department of the Interior, Bureau of Land Management or by a decree of a Court of Law and/or that the corner points mentioned in lines 3, 4 and 5 above were in conformance with the rules of the Michigan Board of Land Surveyors or by a Decree of a Court of Law; established, re-established, monumented, re-monumented, recovered, found as expressed below:

NOTE: Not more than 4 corners, all in the same town and range, may be recorded on this certificate.

A. Description of original monument and accessories and/or subsequent restoration:

B. Description of corner evidence found and/or method applied in restoring or reestablishing corner:

- G-3 RE-ESTAB'D NE COR OF SEC 9 AT RECORD U.S.(G.L.O.) DISTANCE 5280' EAST OF NW COR OF SEC 9 (GOOD ORIG. G.L.O. COR) & AT PRORATED DISTANCE N & S TO U.S.(G.L.O.) BETW N LINE SEC 4 (Calc. POSITION FOR NE S-4 IN LAKE) & RECOVERED E 1/4 COR S-16 (GOOD ORIG COR). CORNER RE-ESTAB'D BY THIS METHOD FITS U.S.(G.L.O.) TIE N & E TO SHORE OF LK MICH. (MAKING ALLOWANCE FOR FACT THAT LK MICH IS PRESENTLY 2 FT ABOVE ORDINARY HIGH WATER MARK; COR ALSO FITS U.S. TIE WEST TO FOOT & TOP OF RIDGE REASONABLE (U.S. TIE TO NEAREST CHAIN). E-W RANDOM IS N 22.05'. *ctr. of trail (S05°E & N05°W) IS 275'(±5') West*
- 1 ESTAB'D NE COR OF NW 1/4 OF NW 1/4 OF S-9 (1/8'COR), EQUIDISTANT & ON LINE BETW NW COR & N 1/4 COR OF S-9. COR FALLS IN CTR OF OLD N-S TRAIL RD (IN CURVE). NOTE: THIS COR FITS U.S.(G.L.O.) TIE OF 60 CHAINS W OF NE COR OF S-9 (60 CHAINS-3960' TO NEAREST CHAIN), "FOOT OF STEEP RIDGE SE-NW" EXACTLY. THE FOOT OF STEEP HILL TO W (BRG OF RIDGE OR HILL IS N55°W) IS 12'± W OF 1/8 COR. ALSO SET SQ TOP CED POST ALONG SIDE 1/8 COR IN TRAIL RD BUT ONE CAN STILL DRIVE AROUND 1/8 COR.

C. Description of monument for corner and accessories established to perpetuate locating the position of the corner:

G-3
 DROVE 1" X 48" PIPE W/RLS CAP
 & SET CED POST W/LOC TAG.
 7" MAPLE N78°W 25.6'
 5" MAPLE S24°W 23.4'
 14" MAPLE S14°E 7.9'
 8" ASH N86°E 32.7'

1
 DROVE 5/8" X 34" REROD W/RLS CAP & SET CED
 POST W/ LOC TAG.
 12" MAPLE N24°E 9.5'
 9" MAPLE S14°E 25.4'
 22" MAPLE S40°W 13.1'
 10" MAPLE N36°W 44.7'



Signed by Carl F. Roser 12-29-86 Date _____

Surveyor's Michigan License No. 12028

FORM APPROVED BY MICHIGAN STATE BOARD OF LAND SURVEYORS, JAN. 26, 1971
 REVISED MAY 14, 1975
 REVISED JAN., 1983

SOUTH FOX ISLAND
 LEELANAU COUNTY