

LAND CORNER RECORDATION CERTIFICATE
Filing Requirement of Act 74, Mich. P.A. 1970

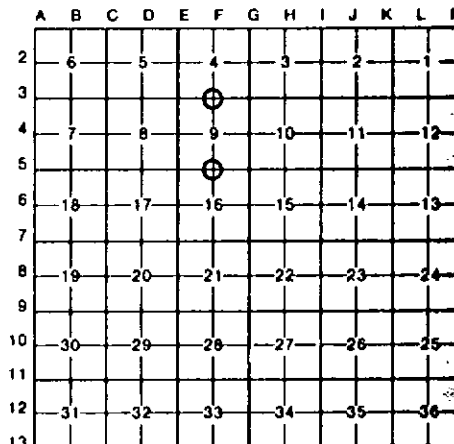
For corners in

LEELANAU <small>(County)</small>	Located In:	Corner Code #/
1. Public Land Survey	T 34N R 13W	F-3
	T 34N R 13W	F-5
	T _____ R _____	_____
	T _____ R _____	_____
2. Property Controlling in Section	S _____ T _____ R _____	_____
	S _____ T _____ R _____	_____
3. Miscellaneous Property in Sec.	S _____ T _____ R _____	_____
	S _____ T _____ R _____	_____
4. Lot No. _____, Recorded Plat _____		
5. Private Claims _____		

Register of Deeds Stamp & File Number

I, CARL F. ROSER, in a field survey on OCTOBER 14, 19 86, do hereby certify that under requirements of P.A. 74, Michigan P.A. of 1970, the corner points mentioned in lines 1 and 2 above were in conformance with regulations and rules therefore as required in the current manual of survey instructions of the United States Department of the Interior, Bureau of Land Management or by a decree of a Court of Law and/or that the corner points mentioned in lines 3, 4 and 5 above were in conformance with the rules of the Michigan Board of Land Surveyors or by a Decree of a Court of Law; established, re-established, monumented, re-monumented, recovered, found as expressed below.

NOTE: Not more than 4 corners, all in the same town and range, may be recorded on this certificate.



A. Description of original monument and accessories and/or subsequent restoration:

B. Description of corner evidence found and/or method applied in restoring or reestablishing corner:

F-3 RE-ESTAB'D. 1/4 COR COMMON TO SEC'S 4 & 9; (2640' E OF NW S-9) EQUIDISTANT & ON LINE BETW SEC CORNERS 1/2 MILE TO EAST AND WEST. CORNER IS 10.4' SOUTH OF E-W RANDOM LINE AND ON TRUE N-S 1/4 LINE TO SOUTH. A TRAIL RD RUNNING APPROX NE & SW IS 250'± WEST AND 150'± NORTH. NOTE: 1/4 COR RE-ESTAB'D AS ABOVE FITS FOOT OF RIDGE & TOP OF RIDGE TO EAST & WEST EXACTLY PER 1847 U.S.(G.L.O.) SURVEY. ALSO SEE CORNER RECORD FOR NE COR OF NW 1/4-NW 1/4 OF SEC 9 (CODE 1, SEC 9) FOR ADDITIONAL TIE THAT FITS EXACTLY U.S. TIE TO FOOT OF STEEP RIDGE.

F-5 RESTORED S 1/4 COR OF SEC 9 AT RECORD U.S. (G.L.O.) DISTANCE EAST (828.3') OF REFERENCE U.S.M.C. TO WEST (SEE COR CODE 828.3' W OF F-5) AND ON LINE BETW REF U.S.M.C. & SE COR OF SEC 9 (SEE COR CODE G-5). COR IS AT N'LY EDGE OF TRAIL RD (BIG JOHN RD.) WHICH RUNS NE-SW. E-W RANDOM TRAVERSE IS 32.5' N.

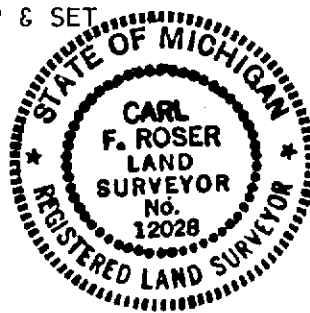
C. Description of monument for corner and accessories established to perpetuate locating the position of the corner:

F-3

DROVE 1" X 36" PIPE W/RLS CAP & SET
 CED POST W/LOC TAG.
 12" MAPLE N48°W 38.9'
 16" IRONWD S44°W 36.4'
 10" MAPLE S22°W 54.2'
 12" ASH S08°E 32.7'
 6" MAPLE N58°E 38.8'

F-5

DROVE 1" X 48" PIPE W/RLS CAP & SET
 CED POST W/LOC TAG.
 33" MAPLE S40°W 31.0'
 27" MAPLE N38°W 60.7'
 13" IRONWD N34°E 42.7'
 22" MAPLE S80°E 54.7'



Signed by Carl F. Roser

Date 12-29-86

Surveyor's Michigan License No. 12028

FORM APPROVED BY MICHIGAN STATE BOARD OF LAND SURVEYORS, JAN. 26, 1971
 REVISED MAY 14, 1976
 REVISED JAN., 1983

SOUTH FOX ISLAND
 LEELANAU COUNTY